

## Roles of Histidine Kinase Gene *yycG* in the Pathogenicity of *Listeria monocytogenes*

Xiaowei FANG<sup>1,2,a,¶</sup> Wei HU<sup>3,4,b,¶</sup> Yu ZHANG<sup>1,c</sup> Chen WANG<sup>1,2,d</sup> Qingping LUO<sup>2,e</sup> Hui WU<sup>4,f</sup>  
Xiongyan LIANG<sup>1,g</sup> Yufang GU<sup>1,h</sup> Chun FANG<sup>1,2,i</sup> Yuying YANG<sup>1,j</sup>

<sup>¶</sup> These authors contributed equally to this work

<sup>1</sup> College of Animal Science, Yangtze University, No.88, Jingmi Road, Jingzhou, 434025, CHINA; <sup>2</sup> Key Laboratory of Prevention and Control Agents for Animal Bacteriosis (Ministry of Agriculture), Institute of Animal Husbandry and Veterinary Sciences, Hubei Academy of Agricultural Sciences, No.29, Nanhu Road, Wuhan, 430064, CHINA; <sup>3</sup> Engineering Research Center of Ecology and Agricultural Use of Wetland, Ministry of Education, Yangtze University, No.88, Jingmi Road, Jingzhou, 434025, CHINA; <sup>4</sup> State Key Laboratory of Developmental Biology of Freshwater Fish, School of Life Sciences, Hunan Normal University, Changsha 410081, CHINA  
ORCID: <sup>a</sup> 0000-0001-7402-7255; <sup>b</sup> 0000-0001-9506-8689; <sup>c</sup> 0000-0002-1315-9497; <sup>d</sup> 0000-0003-4099-3820; <sup>e</sup> 0000-0001-6075-0063  
<sup>f</sup> 0000-0002-2678-4275; <sup>g</sup> 0000-0002-6256-5600; <sup>h</sup> 0000-0001-6109-4651; <sup>i</sup> 0000-0002-4599-9060; <sup>j</sup> 0000-0002-0957-8373

Article ID: KVFD-2020-24179 Received: 06.03.2020 Accepted: 05.07.2020 Published Online: 06.07.2020

### How to Cite This Article

Fang X, Hu W, Zhang Y, Wang C, Luo Q, Wu H, Liang X, Gu Y, Fang C, Yang Y: Roles of histidine kinase gene *yycG* in the pathogenicity of *Listeria monocytogenes*. *Kafkas Univ Vet Fak Derg*, 26 (5): 679-686, 2020. DOI: 10.9775/kvfd.2020.24179

### Abstract

As an opportunistic foodborne pathogen, *Listeria monocytogenes* could successfully switch self-characteristics in response to environmental conditions. In *L. monocytogenes*, sixteen two-component systems (TCSs) have been found to contribute the bacteria to sensing and adapting to various conditions. Our previous genomic study showed that mutation was observed in the histidine kinase gene *yycG* between Lm850658 and M7 among the sixteen TCSs. The YycFG TCS was found playing important roles in many other Gram-positive bacteria. While the roles of YycFG TCS in *L. monocytogenes* remain poorly known. In this study, we aimed to determine whether *yycG* play roles in pathogenicity of *L. monocytogenes*. We created a histidine kinase gene *yycG* deletion strain ( $\Delta yycG$ ) based on the wild type strain Lm850658 and a complementary strain ( $C\Delta yycG$ ). We found the *yycG* deletion significantly impaired the growth ability and mobility, but enhanced the hemolysis ability *in vitro*. In addition, infection assays on cell and mice model showed that  $\Delta yycG$  exhibited significantly defected in infection ability and virulence. All these phenotypes of the  $\Delta yycG$  could be reversed largely to the levels of the wild type strain Lm850658 by gene complementation. Cell wall-associated and secreted protein analysis showed that the secreted content of  $\Delta yycG$  was significantly increased. And western blotting revealed that Internalin protein B (InlB) and Listerolysin O (LLO) was markedly increased in the secreted fractions of  $\Delta yycG$ , which might be responsible for decreased adhesion and invasion ability and increased hemolytic activity, respectively. Overall, we found the histidine kinase *yycG* played important roles in pathogenicity of *L. monocytogenes* for the first time. Further investigation is needed to explore how the YycFG TCS modulates the growth, mobility, cell surface proteins translocation and virulence.

**Keywords:** *Listeria monocytogenes*, Two-component system, Histidine kinase *yycG*, Pathogenicity

## *Listeria monocytogenes*'in Patojenitesinde Histidin Kinaz Geni *yycG*'nin Rolü

### Öz

Gıda kaynaklı fırsatçı bir patojen olan *Listeria monocytogenes*, çevresel koşullara tepki olarak kendi özelliklerini başarılı bir şekilde değiştirebilir. *L. monocytogenes*'te, onaltı adet iki bileşenli sistemin (TCS) bakterilerin çeşitli durumları algılamasına ve adaptasyonuna katkıda bulunduğu belirlenmiştir. Önceki genomik çalışmamız, on altı TCS'den Lm850658 ve M7 arasındaki histidin kinaz gen *yycG*'de mutasyon gözlemlendiğini göstermiştir. YycFG TCS'nin diğer birçok Gram pozitif bakteride önemli roller oynadığı belirlenmiştir. Oysa *L. monocytogenes*'teki YycFG TCS'nin rolü hala tam olarak bilinmemektedir. Bu çalışmada, *yycG*'nin *L. monocytogenes*'in patojenitesinde rol oynayıp oynamadığını belirlemeyi amaçladık. Yaban tipi Lm850658 suşunu ve tamamlayıcı bir suşu ( $C\Delta yycG$ ) temel alan bir histidin kinaz geni *yycG* silme suşu ( $\Delta yycG$ ) oluşturduk. *yycG*'nin silinmesinin büyüme kabiliyetini ve hareketliliğini önemli ölçüde bozduğunu, ancak *in vitro* hemoliz yeteneğini artırdığını bulduk. Ek olarak, hücre ve fare modelindeki enfeksiyon deneyleri,  $\Delta yycG$ 'nin enfeksiyon yeteneği ve virülansta önemli ölçüde kusurlu olduğunu gösterdi.  $\Delta yycG$ 'nin tüm bu fenotipleri, gen tamamlaması ile büyük ölçüde yaban tipi Lm850658 suşunun düzeyine tersine çevrilebilir. Hücre duvarı ilişkili ve salgılanan proteinler analizi,  $\Delta yycG$ 'nin salgılanan miktarının önemli ölçüde arttığını gösterdi. Western blot analizi,  $\Delta yycG$ 'nin salgılanan fraksiyonlarında; sırasıyla azalmış yapışma ve invazyon yeteneğinden ve artmış hemolitik aktiviteden sorumlu olabilecek Internalin protein B (InlB) ve Listerolysin O'nun (LLO) belirgin şekilde arttığını ortaya koydu. Histidin kinaz *yycG*'nin *L. monocytogenes* patojenitesinde önemli roller oynadığı ilk kez belirlendi. YycFG TCS'nin büyüme, hareketliliği, hücre yüzeyi proteinlerinin translokasyonunu ve virülanı nasıl değiştirdiğini belirlemek için ileri araştırmalara ihtiyaç vardır.

**Anahtar sözcükler:** *Listeria monocytogenes*, İki bileşenli sistem, Histidin kinaz *yycG*, Patojenite



### Correspondence



+86 716 8060207 (C. Fang), +86 716 8060308 (Y. Yang)



fangchun@zju.edu.cn (C. Fang), yangyycn@yangtzeu.edu.cn (Y. Yang)

## INTRODUCTION

*Listeria monocytogenes* is a non-spore forming Gram positive microorganism which contaminates food and has been frequently associated to foodborne disease. In humans, *L. monocytogenes* can cause listeriosis, a disease that ranges from febrile gastroenteritis to a more severe, invasive disease such as meningitis and septicemia [1,2]. *L. monocytogenes* infection cycle includes adhesion and invasion into host cells, escape from phagocytic or internalized vacuoles, intracellular multiplication, and cell to cell spread [1,3]. The major virulent factors mediate *L. monocytogenes* entry and survival in host cells are secreted proteins which are translocated to the bacterial surface. Among these virulent factors, internalins InIA and InIB mediate *L. monocytogenes* entry into intestinal epithelial cells or other types of cells via E-cadherin and c-Met, respectively [4]. We previously found that failed anchoring on cell surface of InIB was associated with the low-virulent phenotype of *L. monocytogenes* strain M7 [5]. Indicating that correction anchoring of the surface proteins is quite necessary for the function of these virulent factors. In Gram-positive bacteria like *L. monocytogenes*, the majority of secreted proteins are first translocated across the cytoplasmic membrane and then delivered to membrane-anchored, cell-wall anchored or extracellular milieu under suitable environments [6,7]. Anchoring of these secreted proteins were affected by complicated conditions, including ionic concentration, pH, redox potential and post-translocation modification [8-10].

Two-component regulatory signaling systems (TCSs) are used by most prokaryotic organisms to sense and adapt to various stress conditions encountered in nature, during food processing and infection [11]. A typical TCS is usually constituted of a transmembrane sensor histidine kinase and a cognate cytoplasmic response regulator [11]. In the first sequenced genome of *L. monocytogenes* EGDe, 16 TCSs have been identified [12]. These TCSs are also found in the genomes of the virulent strain Lm850658 and avirulent strain M7, which were sequenced by us. But difference was only observed in *yycG* of the YycFG TCS between Lm850658 and M7. YycFG TCSs are prevalent distribution in other Gram-positive bacteria, which share similar sequences and operon structures that contain 3-6 genes [13]. Previous studies showed that the YycFG TCS is quite important in those Gram-positive bacteria, since it plays essentially and regulatory roles in metabolism, cell division, cell wall synthesis, autolysis, biofilm formation and virulence [13-18]. While the roles of YycFG TCS in *L. monocytogenes* remain poorly known. Up to date, only Pontinen A. et al. showed that the histidine kinase YycG was involved in the growth of *L. monocytogenes* EGDe at low temperatures [19]. Whether YycFG TCS plays other roles in *L. monocytogenes* remains to be explored.

This study was aimed to determine whether *yycG* contribute to the virulence of *L. monocytogenes*. Therefore, we created a histidine kinase gene *yycG* deletion mutant using

homologous recombination and a complementary strain. We found the *yycG* deletion significantly impaired the growth ability and mobility, but enhanced the hemolysis ability *in vitro*. In addition, infection assays on cell and mice model showed that the deletion of *yycG* in Lm850658 significantly defected the infection ability and virulence. Taken together, we found the histidine kinase *yycG* played important roles in pathogenicity of *L. monocytogenes* for the first time.

## MATERIAL and METHODS

### Bacterial Strains, Plasmids, Cells and Culture Conditions

*Listeria monocytogenes* virulent strain Lm850658 (serovar 4a) was used as the wild-type strain. *Escherichia coli* DH5 $\alpha$  was employed as the host strain for shuttle vector pKSV7 and expression plasmid pIMK2. *L. monocytogenes* strains were cultured with brain heart infusion medium (BHI, Oxoid, Basingstoke, U.K.) and *E. coli* DH5 $\alpha$  was cultured with Luria-Bertani (LB, Oxoid) medium at 37°C. Stock solutions of ampicillin (50 mg/mL), gentamycin (50 mg/mL), kanamycin (50 mg/mL) and chloramphenicol (10 mg/mL) (Sangong Biotech, Shanghai, China) were added to media at required concentrations. Macrophages RAW264.7 and epithelial cells Caco-2 (National Infrastructure of Cell Line Resource, Beijing, China) were cultured at 37°C and 5% CO<sub>2</sub> in complete RPMI 1640 medium (Gibco, New York, U.S.A.) containing 10% fetal bovine serum (FBS) (Gibco).

### Plasmids Construction

The *yycG* gene fragment and the *yycG* homoarms were amplified from the genomic DNA of *L. monocytogenes* Lm850658 with oligonucleotide primers were synthesized by BGI-tech (Wuhan, China) (Table 1). PCR fragments and plasmids were purified using the DNA Gel Extraction Kit and Unit-10 plasmid Extraction Kit (Sangong Biotech), respectively. Plasmids pIMK2 and pKSV7 were linearized with restriction enzyme *Bam*HI (New England Biolabs, Massachusetts, U.S.A.) and then gel-purified. Purified PCR fragments and plasmid fragments were ligated by recombinase Exnase II with the One Step Clone Kit (Vazyme Biotech, Nanjing, China) as the manufacturer's instructions to produce recombinant plasmids (pIMK2-*yycG* and pKSV7-*yycG* homoarm). The ligation products were transformed into competent cells DH5 $\alpha$  and positive clones were then confirmed by PCR and sequencing.

### Construction of *yycG* Deletion and Complement Strains

A homologous recombination strategy was used for construction of *yycG* deletion mutant in *L. monocytogenes* wild-type strain Lm850658 according to the protocols [20]. The recombinant plasmids pKSV7-*yycG* homoarm were electroporated into *L. monocytogenes* competent cells. Transformants were grown at a non-permissive temperature (41°C) in BHI containing chloramphenicol (10  $\mu$ g/mL) to

**Table 1.** Primers used for deletion and complement mutants construction

Primers	Sequences (5'-3')
yycG-A	CATGCAGGTCGACTCTAGAGATGTAACGAAACCATTAGTAAC
yycG-B	AGCGAAATCCTGTTTTTTCATCATAAGTCTTTCTACTCTATTTCG
yycG-C	ATGATGAAAAAACAGGATTCGCT
yycG-D	ATTCGAGCTCGGTACCCGGGGTCAGCTTGCTTTCATTCTTTTA
yycG-E	ATGATGGCGATGAAGCGTTAGA
yycG-CF	GAAGGAGAGTGAAACCCATGGAAGATGCATAAATGAGATTTTTTCAGTCTGTACA
yycG-CR	CGAATTCCTGCAGCCCGGGTCATTCCAATCATCTCCGGT

promote chromosomal integration and recombination. The recombinants were passaged, in succession, in BHI without antibiotic at a permissive temperature (30°C) to enable plasmid to be eliminated. The *yycG* gene deletion strain Lm850658- $\Delta$ *yycG* was identified by PCR and then confirmed by sequencing. For the complement strain, recombinant plasmids pIMK2-*yycG* were electroporated into Lm850658- $\Delta$ *yycG* competent cells.

### Hemolysis Assay

Listeriolysin O (LLO) was tested for hemolytic activity as described [21]. Aliquots of 950  $\mu$ L 5% sheep red blood cells suspension in 10 mM phosphate buffered saline (PBS) were added 50  $\mu$ L filtered overnight culture supernatants with 0.22  $\mu$ m filter (Millipore, Massachusetts, U.S.A.), and 50  $\mu$ L BHI with or without 10% triton-X-100 were set as negative and positive control, respectively. After incubating at 37°C for 6 h, samples were centrifugated at 1.000 g for 5 min and the optical density values of the supernatants (200  $\mu$ L per well) were detected by spectrophotometer at 550 nm in 96 microwell plate.

### Adhesion and Invasion Assays in Caco-2 Cells

Overnight cultures were harvested by centrifugation (5.000 g for 10 min), resuspended in 10 mM PBS (pH 7.4) and adjusted the optical density at the wavelength of 600 nm ( $OD_{600\text{ nm}}$ ) to 0.25. The epithelial cell line Caco-2 was grown at 37°C and 5%  $CO_2$  for 18-24 h to confluence (about  $2 \times 10^5$ ) in 12-well plates (Corning, New York, U.S.A.) and infected with *L. monocytogenes* at multiplicity of infection (MOI) of 10:1 for 1 h. For adhesion assay, cells were lysed after three times of washing with PBS. For invasion assay, cells were washed with PBS after 1 h infection and incubated for an additional 1 h in RPMI 1640 medium containing 10% FBS and 50  $\mu$ g/mL gentamycin. At the indicated times, the cells were lysed and 10-fold diluted for plating on BHI agar. The agar plates were incubated overnight at 37°C for colony counting. Adhesion rate was expressed as the percentage of recovered colonies to those inoculated; while invasion rate was calculated as the percentage of recovered colonies after gentamycin treatment to those inoculated.

### Survival in Macrophage RAW264.7

Cells were infected with resuspended bacteria as above

(MOI =10:1) at 37°C and 5%  $CO_2$  for 1 h. Extracellular bacteria were killed with additional 1 h incubation in the presence of 50  $\mu$ g/mL gentamycin. Cells were lysed with ice-cold disitilled water after three times of washing with PBS and diluted appropriately for plating on BHI agar plates for colony counting to calculate the initial intracellular bacteria. To count intracellular survived bacteria, cells were cultured for another 3 h in the presence of 5  $\mu$ g/mL gentamycin and then lysed with ice-cold distilled water after three times of washing and diluted appropriately for plate counting. Survival rate was calculated for each strain by dividing the final recovered colony counts with those initial intracellular counts.

### Actin-tail Formation in Caco-2 and Macrophage Cells

Actin-tail formation assay was conducted as our previous research [22]. Briefly, the Caco-2 and RAW264.7 cells were seeded in 24-well plate and cultured in RPMI 1640 medium containing 10% FBS. Overnight bacterial cultures were harvested and adjusted  $OD_{600\text{ nm}}$  at 0.25. Cells were infected at MOI of 10:1 at 37°C and 5%  $CO_2$  for 1 h. Extracellular bacteria were killed with 50  $\mu$ g/mL gentamycin for 1 h and then incubated for additional 5 h. Cells was washed gently with 10 mM PBS, fixed with 4% paraformaldehyde and then permeabilized with 0.5% Triton X-100. The bacteria were probed with *L. monocytogenes* polyclonal antibodies which was produced by our laboratory for 1 h at 37°C, washed twice with PBS and stained with Alexa Fluor 488 conjugated donkey anti-rabbit antibody (Thermo Fisher Scientific, Massachusetts, U.S.A.) for 1 h at 37°C. F-actin was then stained with 6.6  $\mu$ M phalloidin-Alexa Fluor 568 (Thermo Fisher Scientific). The 6-diamidine-2-phenylindole (DAPI, Thermo Fisher Scientific) was used to stain the nuclei. Actin tails recruited by the bacteria were visualized by confocal microscope (Olympus FV 1000, Tokyo, Japan) and indicated by arrows.

### Virulence in Mice Model

The assay was conducted as our previous research [23]. Four-weeks age female ICR mice, twenty per group, were acclimatized for three days in a standard class II laboratory animal facility. Overnight cultures were treated as above with adjusted  $OD_{600\text{ nm}}$  at 0.6. Mice were inoculated intraperitoneally with  $2 \times 10^5$  bacteria. At 24 and 48 h post

infection (pi), mice (six per group) were euthanized, liver and spleen samples were homogenated, and diluted appropriately for plating counting on BHI agar plates. The rest mice were observed for mortalities twice a day for 7 days. Animal experiments were approved by the Laboratory Animal Management Committee of Yangtze University (Approval No. 20161212).

### Surface Proteins Analysis

Surface proteins analysis by sodium dodecyl sulfate polyacrylamide gel electrophoresis (SDS-PAGE) and Western-blotting was conducted as our previous research [23]. Bacteria were cultured in 100 mL BHI medium at 37°C for 12 h, and then harvested by centrifugation (15,000 g, 10 min). The supernatant samples were filtered through 0.22 µm filter (Millipore) and proteins were precipitated with 100% (w/v) trichloroacetic acid to a final concentration 10% (w/v) at 4°C. Cell wall associated proteins were extracted from bacterial pellet with 1% SDS (30 mg wet weight per ml of 1% SDS) at 37°C for 1 h. Protein samples were analyzed by 12% SDS-PAGE gel. Abundance of the secreted and surface-associated proteins InIA, InIB, and LLO were blotted and probed with respective polyclonal antibodies. The glyceraldehyde-phosphate dehydrogenase (GAPDH) was probed and set as loading control. All primary antibodies including anti-InIA, anti-InIB, anti-LLO and anti-GAPDH polyclonal antibodies were produced in our laboratory and the secondary antibody HRP-conjugated Goat anti-Rabbit IgG (D110058) was purchased from Sangong Biotech.

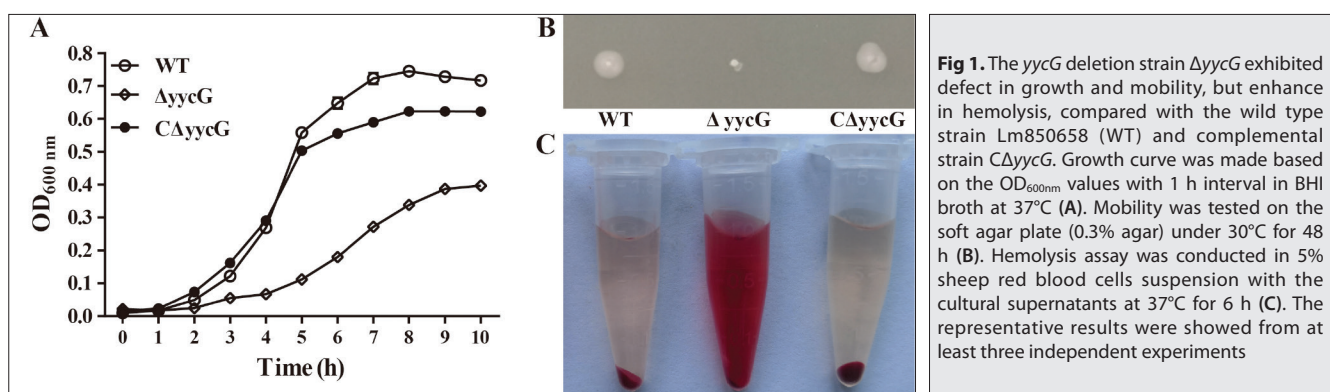
### Statistical Analysis

All results were presented as mean ± SD of triplicate experiments and subjected to one-way analysis of variance

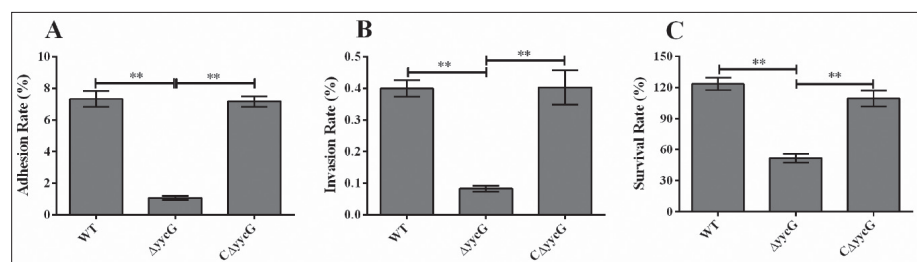
(One-way ANOVA). Differences were considered as statistically significant at  $P < 0.05$ . Notations of statistics marked \* and \*\* indicated the statistical significance with  $P < 0.05$  and  $P < 0.01$ , respectively.

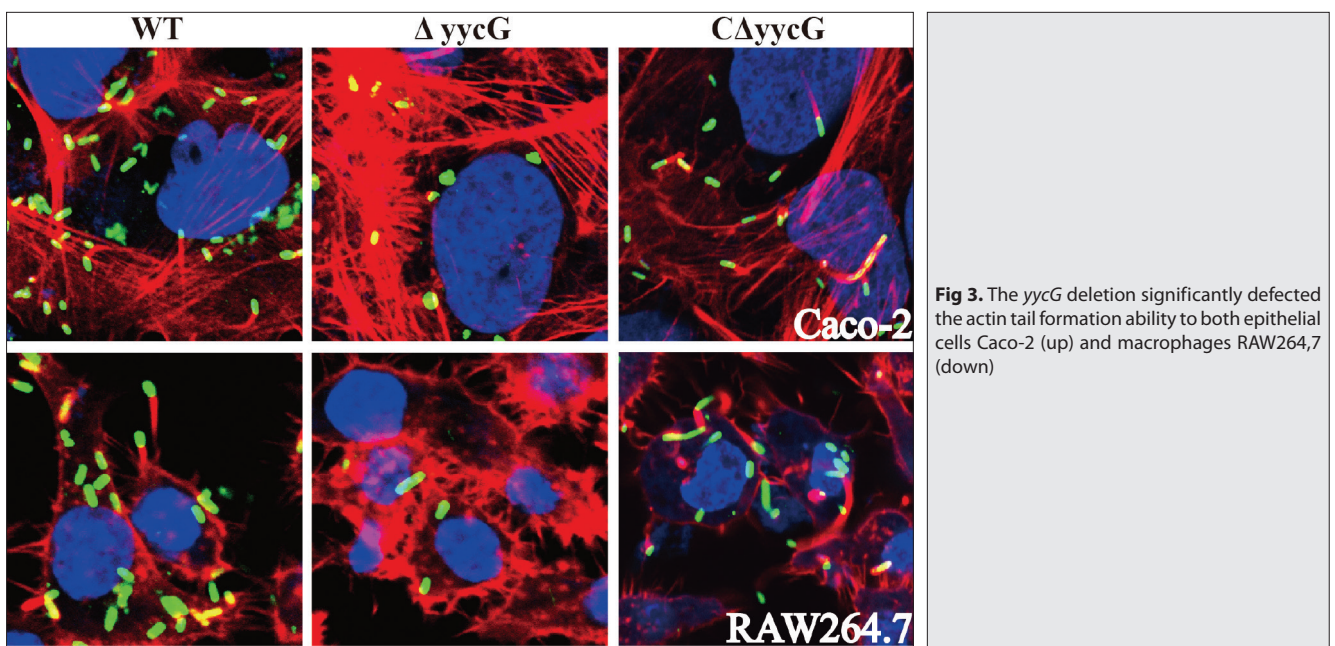
## RESULTS

Our previous research showed that *yycG* of Lm850658 contains a mutant, which results in the 220<sup>th</sup> amino acid residue mutation in HAMP domain [22]. To clarify the role *yycG* in the pathogenicity of *L. monocytogenes*. We constructed a *yycG* in-frame deletion strain ( $\Delta yycG$ ) based on Lm850658 and a complemental strain ( $C\Delta yycG$ ) that express *yycG* with the integrated plasmid pIMK2. We found that the growth ability of mutant strain  $\Delta yycG$  was significantly lower than that of the wild type strain Lm850658 in BHI broth (Fig. 1-A). While the complemental strain  $C\Delta yycG$  partially recovered the growth defect (Fig. 1-A). The mobility of mutant strain  $\Delta yycG$  was conspicuous smaller than that of the wild type and complemental strains (Fig. 1-B). But the hemolytic ability of mutant strain  $\Delta yycG$  was significantly stronger than that of the wild type and complemental strains as showed in 5% sheep red blood cells suspension (Fig. 1-C). Infection assay on epithelial cells Caco-2 cells showed that the adhesion rate ( $1.07\% \pm 0.22\%$ ) and invasion rate ( $0.08\% \pm 0.01\%$ ) of mutant strain  $\Delta yycG$  were significantly lower than those of the wild type strain and the complemental strain, respectively ( $P < 0.01$ ) (Fig. 2-A,B). Survival in macrophages RAW264.7 showed that the survival rate of the wild type was  $123.33\% \pm 10.12\%$  at 4 h pi, which was significantly higher than that of the mutant strain  $\Delta yycG$  (Fig. 2-C). And the complemental strain exhibited the similar survival ability as the wild type strain ( $P < 0.01$ ) (Fig. 2-C). Actin tail formation assay showed

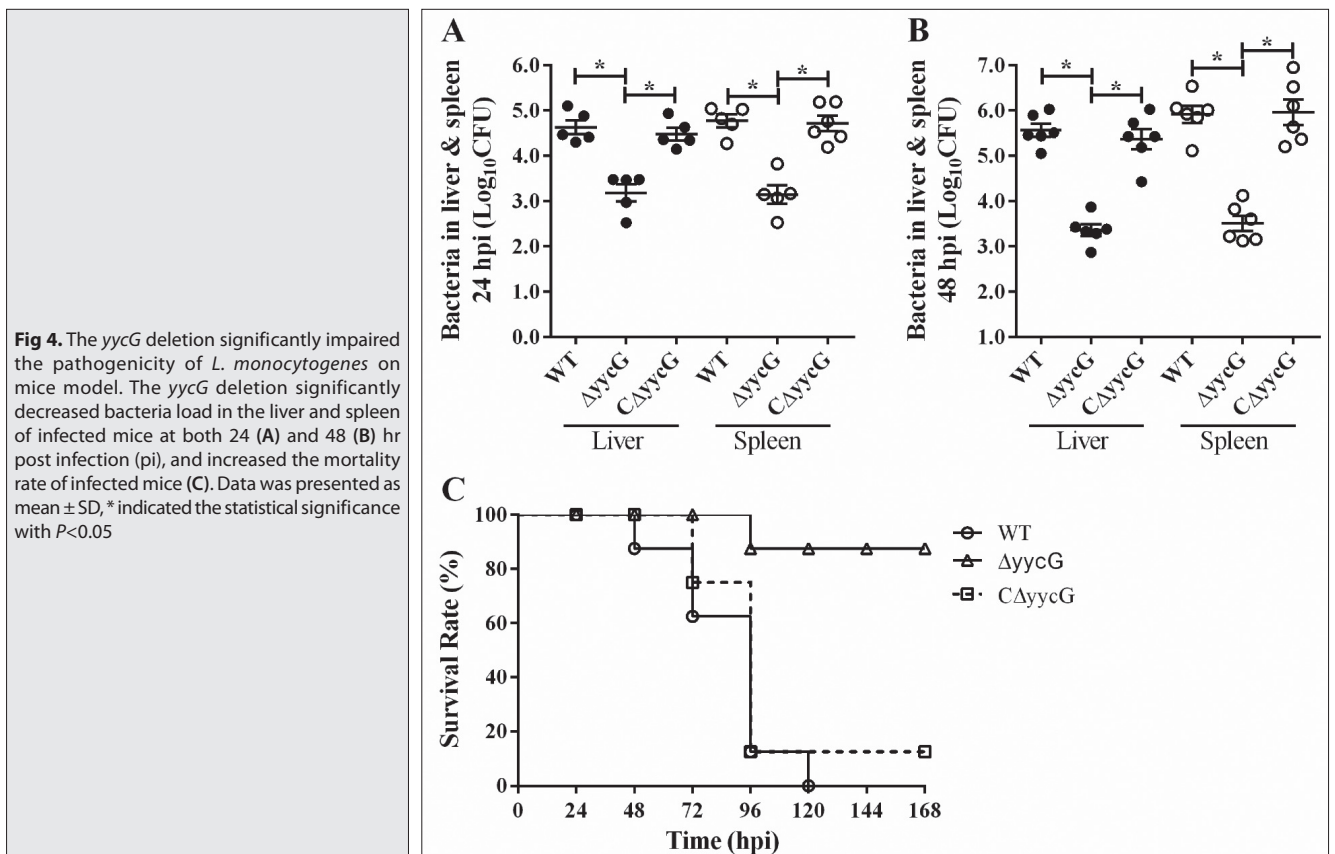


**Fig 2.** The *yycG* deletion significantly defected the infection ability to both epithelial cells Caco-2 and macrophages RAW264.7. Adhesion (A) and invasion (B) ability was conducted on epithelial cell Caco-2, and survival assay was conducted on macrophages RAW264.7 (C). Data was presented as mean ± SD of three independent experiments and \*\* indicated the statistical significance with  $P < 0.01$





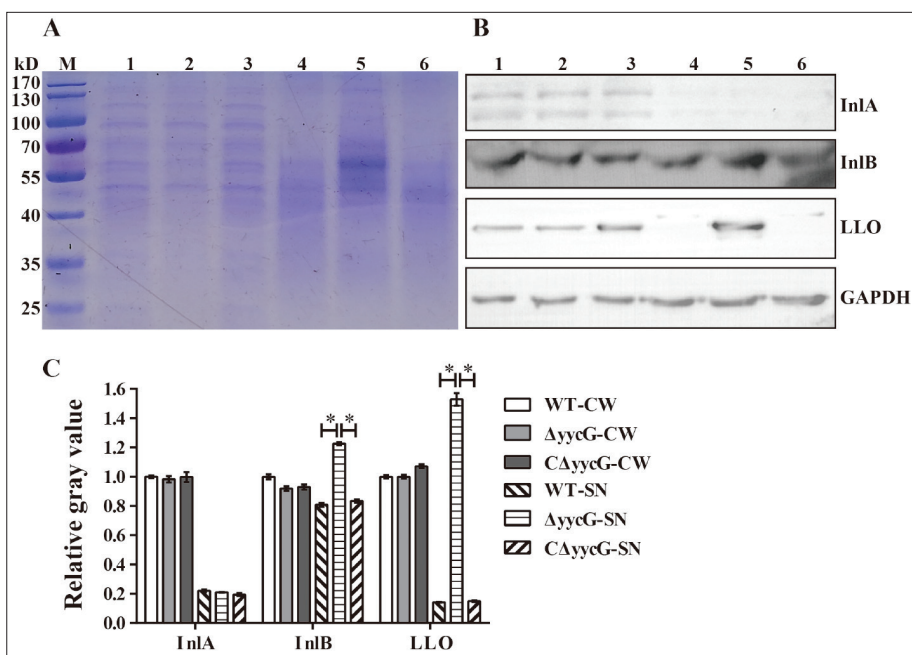
**Fig 3.** The *yycG* deletion significantly defected the actin tail formation ability to both epithelial cells Caco-2 (up) and macrophages RAW264.7 (down)



that deletion of *yycG* almost absolutely abolished the cell-to-cell spread ability of Lm850658 in both epithelial cells Caco-2 and macrophages RAW264.7, and this phenotype was partially recovered in the complementary strain (Fig. 3).

To evaluate the role of *yycG* *in vivo*, the intraperitoneal infection model showed that the bacterial load in liver

and spleen samples of the mutant strain  $\Delta yycG$  infected mice were significantly less than those of the wild type and complementary strains infected mice at 24 and 48 hpi ( $P < 0.05$ ) (Fig. 4-A,B). All mice infected with the mutant strain  $\Delta yycG$  remained alive before 96 hr pi, and only one (12.5%, 1/8) mouse died during the observation period, while the mice infected with wild type strain died within one week (Fig. 4-C). Moreover, 87.5% (7/8) of mice infected



**Fig 5.** The *yycG* deletion significantly increased secretion of InlB and LLO. Cell surface extracted fractions (lane1, WT; lane 2,  $\Delta yycG$ ; lane 3, C $\Delta yycG$ ) and secreted fractions (lane4, WT; lane 5,  $\Delta yycG$ ; lane 6, C $\Delta yycG$ ) were analyzed by SDS-PAGE (A) and western blot (B). The relative contents of InlA, InlB and LLO in different strains were analyzed by calculated the density of the specific bands (C). \* indicated the statistical significance with  $P < 0.05$

with the complementary strain died during the seven days observation period (Fig 4-C). These results suggest that *yycG* deletion significantly weakened the pathogenicity of *L. monocytogenes*.

As pathogenicity of *L. monocytogenes* were mainly determined by the cell surface virulent factors. To explore the mechanisms that *yycG* affected the virulence of *L. monocytogenes*, we analyzed the bacterial surface associated virulent factors of wild type and *yycG* deletion strain. Our data showed that the content of some proteins extracted from the cell surface of the mutant strain  $\Delta yycG$  were obvious less than those of the wild type and *yycG* complementary strain (Fig. 5-A). While opposite pattern was observed in cultural supernatant samples of these strains (Fig. 5-A). Western blotting analysis showed that content of InlB and LLO of mutant strain  $\Delta yycG$  were significant more than those of wild type and *yycG* complementary strain in secreted fraction ( $P < 0.05$ ), while no significant difference was observed in the cell surface extraction (Fig. 5-B,C). And the distribution of InlA remained unchanged among the three strains in cell surface extraction and secreted fraction (Fig. 5-B,C).

## DISCUSSION

*Listeria monocytogenes* is an environmental saprotroph that becomes a pathogen following ingestion by mammalian hosts [2]. Yet, not all *L. monocytogenes* strains have the same pathogenicity because transition from environmental organism to pathogen requires significant changes in expression and translocation of virulent factors. These changes happened upon bacteria sensing subtle changes of the environments. TCSs play important roles in adapting to arduous environmental stress factors. YycFG as one of the most highly conserved TCSs in Gram-positive bacteria,

exhibits diverse functions in different bacteria. The *yycG* has been shown to respond to low temperature, but not to heat, acid, alkali, osmotic, ethanol and oxidative stresses [19,24]. In this study, we found *yycG* deletion significant impaired the growth ability and mobility, but enhanced the hemolysis ability *in vitro* (Fig. 1), indicating multiple roles for the histidine kinase YycG in *L. monocytogenes*.

Further study showed that *yycG* in *L. monocytogenes* Lm850658 also plays roles in adhesion and invasion to epithelial cells and survival in macrophage RAW264.7 (Fig. 2). Combination with actin tail formation assay and animal assay, we found that *yycG* deletion significantly affect the pathogenicity of Lm850658 (Fig. 3, Fig. 4). Our findings expanding the roles of *yycG* in strain EGDe [12,19]. This might be explained by individual difference between Lm850658 and EGDe, as strain-specific gene function could be observed in other *L. monocytogenes* strains [25]. That is to say YycFG TCS might play different roles in various strains. Although Lm850658 and EGDe were belong to the same species, but they were clustered into different phylogenetic lineage that exhibited different characteristics. In Lm850658, *yycG* deletion results in severe defects in growth, survival in host cells and pathogenicity, and *yycFG* double mutant was failed to obtain. These evidences support that YycFG TCS is essential for *L. monocytogenes*. Since the essential genes knocking out will result in severe defects or lethal effects. Moreover, the essential *yycG* of *Bacillus subtilis* could be deleted only in the background of containing an inducible plasmid that expressed *yycG* [18]. In *Bacillus subtilis*, YycG senses cell division and co-ordinates cell wall remodeling by controlling the transcription of genes for autolysins and their inhibitor [18]. As a regulator of cell wall metabolism, dysfunction of YycFG TCS results in growth defect, cell wall architecture disorder and even cell death via multiple YycFG regulated genes [26].

The abnormal distribution of InlB and LLO in *yycG* deletion strain might be result from disturbing the cell wall remodeling. Since the anchoring of InlB onto cell surface need lipoteichoic acid (LTA) and suitable cationic conditions [27]. And the secretion and maturation of LLO was also associated with the environments between cell membrane and cell wall [28]. Furthermore, increase of the dissociated InlB and LLO from the secreted fraction do not seem to be benefit for the pathogenicity of *L. monocytogenes*, as demonstrated by *in vitro* and *in vivo* infection assays (Fig. 2, 3 and 4). Previous research showed that exogenous InlB could also activate the c-Met signaling [29,30], which might compete with the cell surface InlB for bacteria invasion. In this way, secreted InlB dissociated from the bacterial surface might inhibit the adhesion and invasion of *L. monocytogenes* to host cells.

Listeriolysin O is a versatile virulent factor involving in several infection progresses of *L. monocytogenes* [28]. Extracellular LLO is sufficient to direct bacterial internalization into HepG2 cells via activating tyrosine kinases and their downstream signaling [31]. Once entry into the cytosol, LLO could induce mitochondrial fragmentation, endoplasmic reticulum stress, unfolded protein response, protein degradation, inflammasome activation and cell-to-cell spread [28]. In the phagosome, LLO could perforate the membrane of phagosomes in graded, manage reactive oxygen species, establish chronic infection and induce autophagy [28]. But most of the functions of LLO appear to be by-products of either pore formation or entry of *L. monocytogenes* into the cytosol [28,32]. Since LLO is a multiple function factor whose expression, translocation, activation and even degradation was tightly regulated [28,33]. It is not difficult to find that un-controlled LLO is not benefit for the subtle intracellular lifecycle of *L. monocytogenes* as observed in previous reports [34,35] and in this study.

Taken together, we demonstrated that *yycG* played important roles in growth and pathogenicity of *L. monocytogenes* Lm850658. Further study might focus on the mechanisms of the *yycG* involved in the growth and pathogenicity of Lm850658 and the roles of the whole YycFG TCS in *L. monocytogenes*.

### STATEMENT OF AUTHOR CONTRIBUTIONS

XWF, WH and CF designed the project, conducted most of the experiments and drafted the manuscript. XWF, WH, YZ, CW, QPL, HW, XYL, YFG and CF were involved in study design and animal experiments. CF and YYY supervised the study and critically read the manuscript.

### ACKNOWLEDGMENTS

This work was supported by National Natural Science Foundation of China (No. 31802208) and Key Laboratory of Prevention and Control Agents for Animal Bacteriosis (Ministry of Agriculture, No. KLPCAAB-2018-05) to Chun Fang, partially supported by Engineering Research Center

of Ecology and Agricultural Use of Wetland (No. KF201606) and State Key Laboratory of Developmental Biology of Freshwater Fish (No. 2019KF010) to Wei Hu.

### COMPLIANCE WITH ETHICAL STANDARDS

Disclosure of potential conflicts of interest: All authors declare no conflict of interest.

Research involving Human Participants and/or Animals: This article does not contain any studies with human participants. Mice used for virulent assays were approved by the Laboratory Animal Management Committee of Yangtze University (Approval No. 20161212).

### REFERENCES

1. Pizarro-Cerda J, Cossart P: *Listeria monocytogenes*: Cell biology of invasion and intracellular growth. *Microbiol Spectr*, 6 (6), 6(6):GPP3-0013-2018, 2018. DOI: 10.1128/microbiolspec.GPP3-0013-2018
2. Freitag NE, Port GC, Miner MD: *Listeria monocytogenes* - from saprophyte to intracellular pathogen. *Nat Rev Microbiol*, 7 (9): 623-628, 2009. DOI: 10.1038/nrmicro2171
3. Radoshevich L, Cossart P: *Listeria monocytogenes*: Towards a complete picture of its physiology and pathogenesis. *Nat Rev Microbiol*, 16 (1): 32-46, 2018. DOI: 10.1038/nrmicro.2017.126
4. Pizarro-Cerda J, Kuhbacher A, Cossart P: Entry of *Listeria monocytogenes* in mammalian epithelial cells: An updated view. *Cold Spring Harb Perspect Med*, 2 (11):a010009, 2012. DOI: 10.1101/cshperspect.a010009
5. Fang C, Cao T, Cheng C, Xia Y, Shan Y, Xin Y, Guo N, Li X, Song H, Fang W: Activation of PrfA results in overexpression of virulence factors but does not rescue the pathogenicity of *Listeria monocytogenes* M7. *J Med Microbiol*, 64, 818-827, 2015. DOI: 10.1099/jmm.0.000101
6. Forster BM, Marquis H: Protein transport across the cell wall of monoderm Gram-positive bacteria. *Mol Microbiol*, 84 (3): 405-413, 2012. DOI: 10.1111/j.1365-2958.2012.08040.x
7. Desvaux M, Hebraud M: The protein secretion systems in *Listeria*: inside out bacterial virulence. *FEMS Microbiol Rev*, 30 (5): 774-805, 2006. DOI: 10.1111/j.1574-6976.2006.00035.x
8. Desvaux M, Hebraud M, Talon R, Henderson IR: Secretion and subcellular localizations of bacterial proteins: A semantic awareness issue. *Trends Microbiol*, 17 (4): 139-145, 2009. DOI: 10.1016/j.tim.2009.01.004
9. Cahoon LA, Freitag NE: *Listeria monocytogenes* virulence factor secretion: Don't leave the cell without a chaperone. *Front Cell Infect Microbiol*, 4: 13, 2014. DOI: 10.3389/fcimb.2014.00013
10. Scott JR, Barnett TC: Surface proteins of gram-positive bacteria and how they get there. *Annu Rev Microbiol*, 60, 397-423, 2006. DOI: 10.1146/annurev.micro.60.080805.142256
11. Stock AM, Robinson VL, Goudreau PN: Two-component signal transduction. *Annu Rev Biochem*, 69, 183-215, 2000. DOI: 10.1146/annurev.biochem.69.1.183
12. Williams T, Bauer S, Beier D, Kuhn M: Construction and characterization of *Listeria monocytogenes* mutants with in-frame deletions in the response regulator genes identified in the genome sequence. *Infect Immun*, 73 (5): 3152-3159, 2005. DOI: 10.1128/IAI.73.5.3152-3159.2005
13. Xu T, Wu Y, Lin Z, Bertram R, Gotz F, Zhang Y, Qu D: Identification of genes controlled by the essential YycFG two-component system reveals a role for biofilm modulation in *Staphylococcus epidermidis*. *Front Microbiol*, 8:724, 2017. DOI: 10.3389/fmicb.2017.00724
14. Iwata Y, Satou K, Tsuzuku H, Furuichi K, Senda Y, Sakai-Takemori Y, Wada T, Fujita S, Miyake T, Yasuda H, Sakai N, Kitajima S, Toyama T, Shinozaki Y, Sagara A, Miyagawa T, Hara A, Shimizu M, Kamikawa Y, Kaneko S, Wada T: Down-regulation of the two-component system and cell-wall biosynthesis-related genes was associated with the reversion to

- daptomycin susceptibility in daptomycin non-susceptible methicillin-resistant *Staphylococcus aureus*. *Eur J Clin Microbiol Infect Dis*, 36 (10): 1839-1845, 2017. DOI: 10.1007/s10096-017-2999-3
- 15. Mohedano ML, Amblar M, de la Fuente A, Wells JM, Lopez P:** The Response regulator *yycF* inhibits expression of the fatty acid biosynthesis repressor FabT in *Streptococcus pneumoniae*. *Front Microbiol*, 7:1326, 2016. DOI: 10.3389/fmicb.2016.01326
- 16. Liu H, Zhao Y, Zhao D, Gong T, Wu Y, Han H, Xu T, Peschel A, Han S, Qu D:** Antibacterial and anti-biofilm activities of thiazolidione derivatives against clinical staphylococcus strains. *Emerg Microbes Infect*, 4 (1):e1, 2015. DOI: 10.1038/emi.2015.1
- 17. Vidailiac C, Gardete S, Tewhey R, Sakoulas G, Kaatz GW, Rose WE, Tomasz A, Rybak MJ:** Alternative mutational pathways to intermediate resistance to vancomycin in methicillin-resistant *Staphylococcus aureus*. *J Infect Dis*, 208 (1): 67-74, 2013. DOI: 10.1093/infdis/jit127
- 18. Fukushima T, Furihata I, Emmins R, Daniel RA, Hoch JA, Szurmant H:** A role for the essential *YycG* sensor histidine kinase in sensing cell division. *Mol Microbiol*, 79 (2): 503-522, 2011. DOI: 10.1111/j.1365-2958.2010.07464.x
- 19. Pontinen A, Markkula A, Lindstrom M, Korkeala H:** Two-component-system histidine kinases involved in growth of *Listeria monocytogenes* EGD-e at low temperatures. *Appl Environ Microbiol*, 81 (12): 3994-4004, 2015. DOI: 10.1128/AEM.00626-15
- 20. Fang C, Fang X, Chen X, Wang C, Liang X, Gu Y, Fang W, Yang Y:** Evaluating the contribution of acid resistance systems and probing the different roles of the glutamate decarboxylases of *Listeria monocytogenes* under acidic conditions. *Kafkas Univ Vet Fak Derg*, 26 (2): 231-238, 2020. DOI: 10.9775/kvfd.2019.22784
- 21. Cheng C, Jiang L, Ma T, Wang H, Han X, Sun J, Yang Y, Chen Z, Yu H, Hang Y, Liu F, Wang B, Fang W, Huang H, Fang C, Cai C, Freitag N, Song H:** Carboxyl-terminal residues n478 and v479 required for the cytolytic activity of listeriolysin o play a critical role in *Listeria monocytogenes* pathogenicity. *Front Immunol*, 8:1439, 2017. DOI: 10.3389/fimmu.2017.01439
- 22. Fang C, Cao T, Shan Y, Xia Y, Xin Y, Cheng C, Song H, Bowman J, Li X, Zhou X, Fang W:** Comparative genomic analysis reveals that the 20K and 38K prophages in *Listeria monocytogenes* serovar 4a strains Lm850658 and M7 contribute to genetic diversity but not to virulence. *J Microbiol Biotechnol*, 26 (1): 197-206, 2016. DOI: 10.4014/jmb.1504.04075
- 23. Fang C, Chen X, Liang X, Fang X, Gao K, Chen J, Gu Y, Yang Y:** The Effect of single amino acid substitution in SecA2 on protein translocation and pathogenicity of *Listeria monocytogenes*. *Kafkas Univ Vet Fak Derg*, 25 (5): 665-672, 2019. DOI: 10.9775/kvfd.2018.21558
- 24. Pontinen A, Lindstrom M, Skurnik M, Korkeala H:** Screening of the two-component-system histidine kinases of *Listeria monocytogenes* EGD-e. LiaS is needed for growth under heat, acid, alkali, osmotic, ethanol and oxidative stresses. *Food Microbiol*, 65, 36-43, 2017. DOI: 10.1016/j.fm.2017.01.018
- 25. Cemma M, Lam GY, Stockli M, Higgins DE, Brumell JH:** Strain-specific interactions of *Listeria monocytogenes* with the autophagy system in host cells. *PLoS One*, 10 (5): e0125856, 2015. DOI: 10.1371/journal.pone.0125856
- 26. Bisicchia P, Noone D, Lioliou E, Howell A, Quigley S, Jensen T, Jarmer H, Devine KM:** The essential *YycFG* two-component system controls cell wall metabolism in *Bacillus subtilis*. *Mol Microbiol*, 65 (1): 180-200, 2007. DOI: 10.1111/j.1365-2958.2007.05782.x
- 27. Campeotto I, Percy MG, MacDonald JT, Forster A, Freemont PS, Grundling A:** Structural and mechanistic insight into the *Listeria monocytogenes* two-enzyme lipoteichoic acid synthesis system. *J Biol Chem*, 289 (41): 28054-28069, 2014. DOI: 10.1074/jbc.M114.590570
- 28. Osborne SE, Brumell JH:** Listeriolysin O: From bazooka to Swiss army knife. *Philos Trans R Soc Lond B Biol Sci*, 372:20160222, 2017. DOI: 10.1098/rstb.2016.0222
- 29. Han X, Yu R, Ji L, Zhen D, Tao S, Li S, Sun Y, Huang L, Feng Z, Li X, Han G, Schmidt M, Han L:** InIB-mediated *Listeria monocytogenes* internalization requires a balanced phospholipase D activity maintained through phospho-cofilin. *Mol Microbiol*, 81 (4): 860-880, 2011. DOI: 10.1111/j.1365-2958.2011.07726.x
- 30. Mungunsukh O, Lee YH, Marquez AP, Cecchi F, Bottaro DP, Day RM:** A tandem repeat of a fragment of *Listeria monocytogenes* internalin B protein induces cell survival and proliferation. *Am J Physiol Lung Cell Mol Physiol*, 299 (6): L905-L914, 2010. DOI: 10.1152/ajplung.00094.2010
- 31. Vadia S, Arnett E, Haghghat AC, Wilson-Kubalek EM, Tweten RK, Seveau S:** The pore-forming toxin listeriolysin O mediates a novel entry pathway of *L. monocytogenes* into human hepatocytes. *PLoS Pathog*, 7 (11): e1002356, 2011. DOI: 10.1371/journal.ppat.1002356
- 32. Nguyen BN, Peterson BN, Portnoy DA:** Listeriolysin O: A phagosome-specific cytolysin revisited. *Cell Microbiol*, 21 (3): e12988, 2019. DOI: 10.1111/cmi.12988
- 33. Johansson J, Freitag NE:** Regulation of *Listeria monocytogenes* virulence. *Microbiol Spectr*, 7 (4): GPP3-0064-2019, 2019. DOI: 10.1128/microbiolspec.GPP3-0064-2019
- 34. Schnupf P, Hofmann J, Nørseen J, Glomski IJ, Schwartzstein H, Decatur AL:** Regulated translation of listeriolysin O controls virulence of *Listeria monocytogenes*. *Mol Microbiol*, 61 (4): 999-1012, 2006. DOI: 10.1111/j.1365-2958.2006.05286.x
- 35. Lety MA, Frehel C, Dubail I, Beretti JL, Kayal S, Berche P, Charbit A:** Identification of a PEST-like motif in listeriolysin O required for phagosomal escape and for virulence in *Listeria monocytogenes*. *Mol Microbiol*, 39 (5): 1124-1139, 2001. DOI: 10.1111/j.1365-2958.2001.02281.x