

## Genetic Polymorphism of Five Genes Associated with Meat Production Traits in Five Cattle Breeds in Turkey

Özgecan KORKMAZ AĞAOĞLU<sup>1</sup>  Bilal AKYÜZ<sup>2</sup> Bengi ÇINAR KUL<sup>3</sup>  
Nüket BİLGEN<sup>3</sup> Okan ERTUĞRUL<sup>3</sup>

<sup>1</sup> Mehmet Akif Ersoy University, Faculty of Veterinary Medicine, Department of Animal Science, TR-15030 Burdur - TURKEY

<sup>2</sup> Erciyes University, Faculty of Veterinary Medicine, Department of Genetics, TR-38039 Kayseri - TURKEY

<sup>3</sup> Ankara University, Faculty of Veterinary Medicine, Department of Genetics, TR-06110 Dışkapı, Ankara - TURKEY

Article Code: KVFD-2014-12722 Received: 03.12.2014 Accepted: 26.02.2015 Published Online: 17.03.2015

### Abstract

There are many potential genes that are known to be related to meat production and that can be used for selection to improve meat quality and production include Calpain (CAPN1), Myostatin (MSTN), Calpastatin (CAST), Osteopontin (SPP1) and Thyroglobulin (TG). This study evaluated Zavot (n=60), Anatolian Black (n=59; AB), South Anatolian Red (n=53; SAR), Turkish Gray (n=60; TG) and East Anatolian Red (n=49; EAR) cattle breeds, with the primary goal of investigating DNA polymorphisms of the CAST, TG, SPP1, MSTN and CAPN1 genes. Polymerase chain reaction and restriction fragment length polymorphism (PCR-RFLP) was employed to genotypes. Restriction enzymes revealed polymorphisms with 2 alleles and three genotypes of each CAST, TG, SPP1 and CAPN1 genes were determined in all breeds, while the MSTN locus was found to be monomorphic. Deviation from Hardy-Weinberg equilibrium (HWE) was not observed in the five cattle breeds on SPP1 locus. Significant deviation was observed from HWE in the TG and AB breeds on TG locus. Except for the TG and SAR breeds, genotype frequencies were not consistent with the HWE on CAPN1 locus. Four breeds were found at Hardy-Weinberg equilibrium except AB breed for CAST locus. Consequently, this study has shown that genetic polymorphisms do not exist in the MSTN gene but do exist in the remaining four genes that were examined in five Turkish native cattle breeds.

**Keywords:** Cattle, CAST, TG, SPP1, MSTN, CAPN1

## Türkiye'deki Beş Yerli Sığır Irkında Et Verim Özellikleri ile İlişkili Beş Genin Polimorfizmi

### Özet

Et verimi ile ilişkili olduğu bilinen birçok potansiyel gen vardır. Bu genler içerisinde yer alan; Calpain (CAPN1), Myostatin (MSTN), Calpastatin (CAST), Osteopontin (SPP1) ve Thyroglobulin (TG) genleri seleksiyonda et kalitesi ve verimini geliştirebilmek için kullanılabilir. Bu çalışmada, Zavot (n=60), Yerli Kara (n=59, YK), Güney Anadolu Kırmızısı (n=53, GAK), Boz Irk (n=60, BI) ve Doğu Anadolu Kırmızısı (n=49, DAK) ırkı sığırlarda; CAST, TG, SPP1, MSTN ve CAPN1 genlerinin DNA polimorfizmleri değerlendirilmiştir. Genotiplerin belirlenmesi için polimeraz zincir reaksiyonu ve restriksiyon parça uzunluk polimorfizmi (PZR-RFLP) kullanılmıştır. Restriksiyon enzimleri ile CAST, TG, SPP1 ve CAPN1 genlerinin her birinde 3 genotip ve 2 allel belirlenmiştir. MSTN geni ise monomorfik olarak bulunmuştur. SPP1 lokusunda beş sığır ırkında Hardy-Weinberg dengesinden (HWD) sapma gözlemlenmemiştir. TG lokusunda, Boz ve Yerli Kara ırklarında HW dengesinden önemli sapma gözlemlenmiştir. Boz ve Güney Anadolu Kırmızısı ırkları dışındaki ırklarda CAPN1 lokusunda HW dengesinden sapma olduğu belirlenmiştir. CAST lokusunun Yerli Kara dışında kalan dört ırkta HW dengesinde olduğu bulunmuştur. Sonuç olarak; bu çalışmada incelenen beş yerli sığır ırkında MSTN geni hariç, diğer dört gende polimorfizm olduğu belirlenmiştir.

**Anahtar sözcükler:** Sığır, CAST, TG, SPP1, MSTN, CAPN1

### INTRODUCTION

Molecular genetics techniques make it possible to describe genetic variation at different loci and to investigate the relationships between productivity and the variation

at a Quantitative Trait Locus (QTL). The ultimate goal in selection is to estimate an animal's genetic worth with greater accuracy, thereby increasing the genetic gain achieved through selection. For example, studies have reported that variations in genes that affect physiological



#### İletişim (Correspondence)



+90 248 2132074



ozgecanagaoglu@mehmetakif.edu.tr

events associated with the phenotype can affect quantitative variations in the phenotype <sup>[1]</sup>. Contemporary molecular genetics technology makes it possible to employ genetic markers or traits which exhibit a high correlation with the traits being researched in order to identify very productive animals. These genetic markers can also help to identify these traits when the animal is young, regardless of its gender. The rate of genetic progress using traditional selection methods is quite slow for animals such as cattle, sheep and goats, which have a long generation interval. Marker assisted selection (MAS) used together with traditional selection methods can be very effective for complex traits because it shortens the generation interval, accelerates the genetic progress and achieves improvement in the right direction <sup>[1,2]</sup>. Recently there has been a significant increase in the number of studies done in Turkey on polymorphism in genes that affect the economic traits of cattle breeds <sup>[3-6]</sup>. One of the most important economic traits of farm animals is meat production. There are many potential genes that are known to be related to meat production and that can be used for selection. Potential genes that can be used for selection to improve meat quality and production include Calpain (CAPN1), Myostatin (MSTN), Calpastatin (CAST), Osteopontin (SPP1) and Thyroglobulin (TG). Calpain activity is a cytoplasmic cysteine protease that requires the presence of calcium <sup>[7]</sup>. Suzuki and Sorimachi <sup>[8]</sup> identified two genes for calpain (CAPN1 [ $\mu$ -calpain] and CAPN2 [ $m$ -calpain]). Prior studies have identified a correlation between the regulation of CAPN1 activity and variations in meat tenderness as well as a quantitative trait locus on chromosome 29 where CAPN1 is located which affects meat tenderness <sup>[9]</sup>. Myostatin, which is also known as Growth Differentiation Factor-8 (GDF-8), is a member of the Transforming Growth Factor-B (TGF-B) family. GDF-8 is primarily synthesized in developing skeletal muscles and plays a role in skeletal muscle growth and differentiation. Muscular hypertrophy, a heritable trait commonly known as 'double muscling', is defined as excessive development of muscle mass <sup>[10,11]</sup>. Mutations occurring in the DNA sequences that encode the myostatin gene cause an increase in the muscle mass that is referred to as double muscling, which occurs due to inactivation of the myostatin gene. Senger et al. <sup>[12]</sup> were the first to describe osteopontin (OPN) as 60-kDa transformation-specific phosphoprotein that is secreted and that mediates cell matrix interactions and cellular signals by binding with integrin and CD44 receptors. Denhardt and Guo <sup>[13]</sup> reported that this protein is expressed in a number of different tissues. For this reason, the term 'secreted phosphoprotein 1' (SPP1) was proposed to reflect the factor's extensive functional role. The bovine SPP1 gene is made up of 7 exons that span about 7 kb of the genomic DNA. Schnabel et al. <sup>[14]</sup> and Khatib et al. <sup>[15]</sup> have identified the SPP1 gene on bovine chromosome 6 as a candidate for influencing milk and beef production traits in dairy cattle. Thyroglobulin (TG), which is a glycoprotein precursor of the thyroid hormones T3 and T4, is

only synthesized in the thyroid gland. The SPP1 gene is located at the centromere of chromosome 14 and contains 37 exons. Calpastatin (CAST) specifically inhibits the calcium-dependent neutral protease  $\mu$ -calpain, which is found in the tissue of mammals. Not only does calpastatin inhibit  $\mu$ - and  $m$ -calpain activity, it also regulates post-mortem proteolysis. Koohmaraie <sup>[16]</sup> identified an association between increased post-mortem calpastatin activity and reduced meat tenderness.  $\mu$ -calpain (CAPN1) and  $m$ -calpain (CAPN2) and their inhibitor calpastatin (CAST) are three enzymes that have a significant influence on this process.

The Anatolian Black (AB) breed of cattle is raised in the central Anatolian region. This breed has the smallest body size of all the Turkish native cattle breeds. However, this breed and its crossbreeds, together with the East Anatolian Red (EAR) breed, is the most important source of beef in Turkey. The Turkish Gray (TG) breed is raised in the regions of Marmara and Thrace. Similar breeds are bred in Ukraine, Romania, Hungary and Italy. The South Anatolian Red (SAR) breed is raised in southern Anatolia. It is bred for high milk yield and yields more milk than other Turkish native cattle breeds. The Zavot cattle breed was developed by crossbreeding the Simmental, Brown Swiss and EAR cattle breeds. The Zavot breed yields more milk and meat than EAR cattle, which is another cattle breed native to Turkey.

The number of genetically pure individuals from these native cattle breeds has been greatly reduced because of uncontrolled mating to improve yields, unconscious breeders, not exercising timely protection, and migration from rural to urban centers. Consequently, these breeds are faced with the threat of extinction. In order to survive, these breeds must become more productive. Yield traits related to the use of genetic markers is a good option to achieve this end. However, primarily genetic characterizations of known markers for these breeds are needed.

In the present study, the restriction fragment length polymorphism for the polymerase chain reaction (PCR-RFLP) technique was used to detect genetic polymorphism within five genes associated with meat production traits; CAST, TG, SPP1, MSTN and CAPN1 in EAR, SAR, TG, AB and Zavot cattle.

## MATERIAL and METHODS

### Samples and DNA Isolation

A total of 281 blood samples were collected from Zavot (n=60, Ardahan), AB (n=59, Ankara and Çankırı), SAR (n=53, Şanlı Urfa and Adana), TG (n=60, Edirne and Balıkesir) and EAR (n=49, Erzurum and Kars) cattle breeds. Genomic DNA was isolated with the phenol chloroform isoamylalcohol (25:24:1) method and examined using a NanoDrop 2000 (Thermo Scientific) for quantity and quality control.

### Polymorphism Detection and Genotyping

Table 1 shows the primer sequences used in amplification the relevant gene regions of the DNA that were obtained as well as the primer annealing temperatures, MgCl<sub>2</sub> concentrations and the restriction enzymes used to cut the DNA. All PCR reactions were performed on an Amplitronyx Series 6 thermal cycler. The PCR amplification reaction mixtures were performed in a total volume of 25 µl including ddH<sub>2</sub>O, 1X buffer, MgCl<sub>2</sub> (Table 1), dNTP (200 µM), primers (5 pmol) and Taq DNA polymerase (1 U/µL). This mixture was aliquoted into test tubes with approximately 100 ng DNA. The PCR reactions were cycled with routine procedures (denaturation, annealing and elongation). The annealing temperature for each primer was optimized (Table 1). The PCR products were electrophoresed on 2% agarose gel stained with ethidium bromide. The PCR products of five genes were digested with fast digest enzymes (Table 2) according to the manufacturers' instructions (Fermentas, Vilnius, Lithuania). Restriction products were electrophoresed on 3% (CAPN1, TG, SPP1, CAST) and 5% (MSTN) agarose gel, and then displayed under a UV-transilluminator.

### Statistical Analysis

Direct counting was used to estimate genotype and

in Table 3. Digestion of the 290 bp fragment of the SPP1 gene with the *BsrI* restriction enzyme revealed a polymorphism with two alleles (Table 3). Three genotypes, CC (200 bp/90 bp), TT (290 bp) and CT (290 bp/200 bp/90 bp), were found in the SPP1 gene (Fig. 2). Results showed that the (T) allele had higher frequency in all breeds (Table 3). More animals had the TT genotype than any other genotype. Deviation from HWE was not observed in the five cattle breeds (Table 3).

Heterozygosity of the SPP1 locus varied from 0.17 to 0.37 in the five Turkish native cattle breeds. The heterozygosity, allele and genotype frequencies in these five Turkish native cattle breeds have been shown in Table 3.

### TG Locus

The allele and genotype frequencies of the TG locus obtained for five different cattle breeds have been shown in the Table 4. Digestion of the 545 bp fragment of the TG gene with the *PvuII* restriction enzyme revealed a polymorphism with two alleles (Table 4). Three genotypes, TT (545 bp), CC (370 bp/175 bp) and CT (545 bp/370 bp/175 bp), were found in the TG gene (Fig. 3). Results showed that the (C) allele had higher frequency in all breeds (Table 4). More animals had the CC genotype than any other

Gene	Primer	PCR	MgCl <sub>2</sub>	Ta
CAPN1	5'-TTCAGGCCAATCTCCCCGACG-3' 5'-GATGTTGAACTCCACCAGGCCAG-3'	670bp	1mM	58.4°C
MSTN	5'-CCAATTACTGCTCTGGAGGAT-3' 5'-GGAGACATCTTTGTAGGAGTACAGC-3'	124bp	1.5mM	56.8°C
TG	5'-GGGGATGACTACGAGTATGACTG-3' 5'-GTGAAAATCTTGTGGAGGCTGTA-3'	545bp	1.5mM	60.7°C
SPP1	5'-GCAATCAGAAGTGTGATAGA C-3' 5'-CCAAGCCAAACGTATGAGTT-3'	290bp	2mM	60°C
CAST	5'-CCTCGACTGCGTACCAATTCCGAAGTAAAGCCAAAGGAACA-3' 5'-ATTCTCTGATGGTGGCTGCTACT-3'	523bp	2mM	55.4°C

allele frequencies of genetic variants of the CAST, TG, SPP1, MSTN and CAPN1 genes. A chi-square statistic was used to check whether the populations were in Hardy-Weinberg equilibrium. PopGene32 software was used [17].

## RESULTS

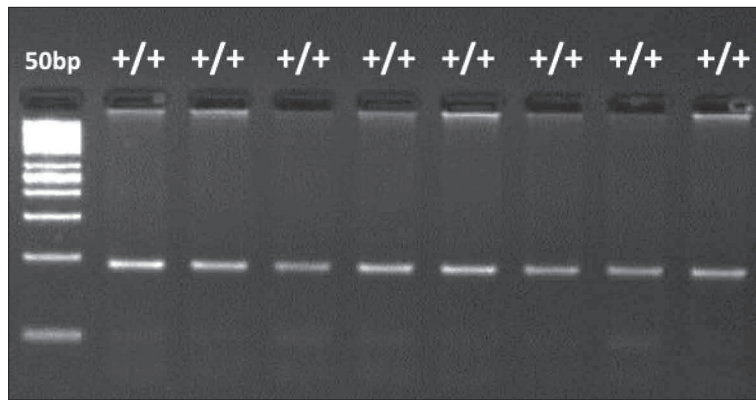
### MSTN Locus

The MSTN locus was found to be monomorphic, and all cattle breeds examined were of the +/+ (100/24bp) genotype (Fig. 1).

### SPP1 Locus

The allele and genotype frequencies of the SPP1 locus obtained for five different cattle breeds have been shown

Gene	RE	Restriction Profiles (bp)		
CAPN1	<i>FokI</i>	TT	CT	CC
		670	670/530/140	530/140
MSTN	<i>BstF5I (FokI)</i>	-/-	+/-	+/+
		124	124/100/24	100/24
TG	<i>PvuII</i>	TT	CT	CC
		545	545/370/175	370/175
SPP1	<i>BsrI</i>	TT	CT	CC
		290	290/200/90	200/90
CAST	<i>RsaI</i>	CC	CG	GG
		523	523/266/257	266/257



**Fig 1.** MSTN genotyping after digestion with *FokI* restriction enzyme

**Şekil 1.** *FokI* restriksiyon enzimi ile kesilen MSTN genotiplendirmesi

**Table 3.** Heterozygosity, allelic genotypes frequency of *SPP1* alleles C, T in five cattle breeds in Turkey

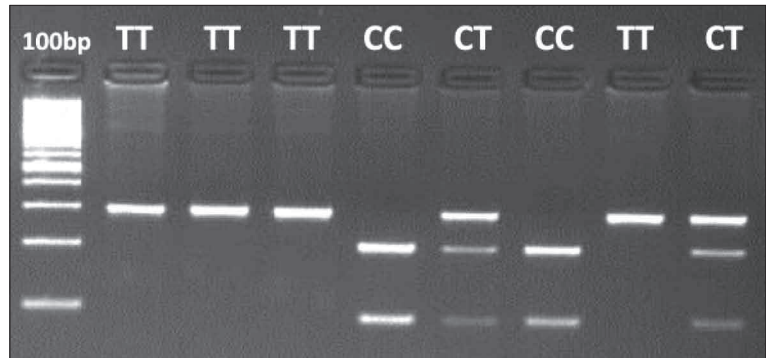
**Tablo 3.** Türkiye'deki 5 sığır ırkında *SPP1* geninin C, T allelik genotip frekansları, heterozigotlukları

Gene	Breed	n	Allele Frequency		Genotype Frequency (%)			Heterozygosity		$\chi^2$ (df=1)
			C	T	CC	CT	TT	Ho	He	
SPP1	TG	60	0.17	0.83	3.3	26.7	70.0	0.27	0.28	0.14 <sup>NS</sup>
	AB	59	0.20	0.80	3.4	33.9	62.7	0.34	0.33	0.08 <sup>NS</sup>
	Zavot	60	0.21	0.79	8.3	25.0	66.7	0.25	0.33	3.83 <sup>NS</sup>
	EAR	49	0.24	0.76	8.2	32.7	59.1	0.33	0.37	0.81 <sup>NS</sup>
	SAR	53	0.09	0.91	1.9	15.1	83.0	0.15	0.17	0.91 <sup>NS</sup>

NS: nonsignificant

**Fig 2.** *SPP1* genotyping after digestion with *BsrI* restriction enzyme

**Şekil 2.** *BsrI* restriksiyon enzimi ile kesilen *SPP1* genotiplendirmesi



**Table 4.** Heterozygosity, allelic genotypes frequency of *TG* alleles C, T in five cattle breeds in Turkey

**Tablo 4.** Türkiye'deki 5 sığır ırkında *TG* geninin C, T allelik genotip frekansları, heterozigotlukları

Gene	Breed	n	Allele Frequency		Genotype Frequency (%)			Heterozygosity		$\chi^2$ (df=1)
			C	T	CC	CT	TT	Ho	He	
TG	TG	60	0.84	0.16	75.0	18.3	6.7	0.18	0.27	6.36*
	AB	59	0.86	0.14	78.0	16.9	5.1	0.17	0.24	5.01*
	Zavot	60	0.80	0.20	61.7	36.7	1.6	0.37	0.32	1.16 <sup>NS</sup>
	EAR	49	0.77	0.23	61.2	30.6	8.2	0.31	0.36	1.25 <sup>NS</sup>
	SAR	53	0.91	0.09	83.0	15.1	1.9	0.15	0.17	0.91 <sup>NS</sup>

\* ( $P < 0.05$ ); NS: nonsignificant

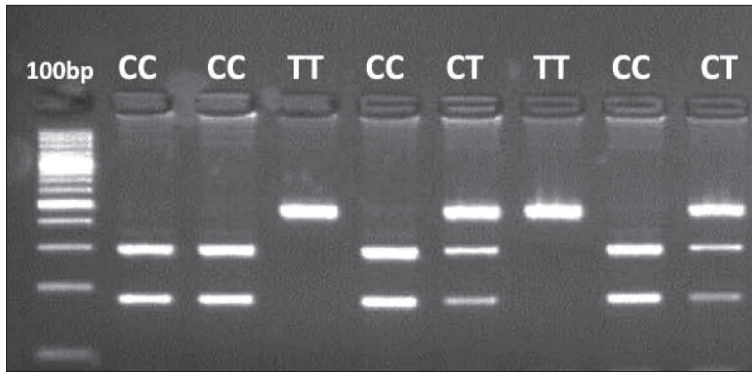
genotype. Significant deviation was observed from HWE in the TG and AB breeds (Table 4).

#### CAPN1 Locus

Digestion of the 670bp fragment of the CAPN1 gene

with the *FokI* restriction enzyme revealed a polymorphism with two alleles (Table 5). The CAPN1 gene had three genotypes: TT (670 bp), CT (670 bp/530 bp/140 bp) and CC (530 bp/140 bp) (Fig. 4). Except for the TG and SAR breeds, genotype frequencies were not consistent with the HWE





**Fig 3.** TG genotyping after digestion with *PstI* restriction enzyme

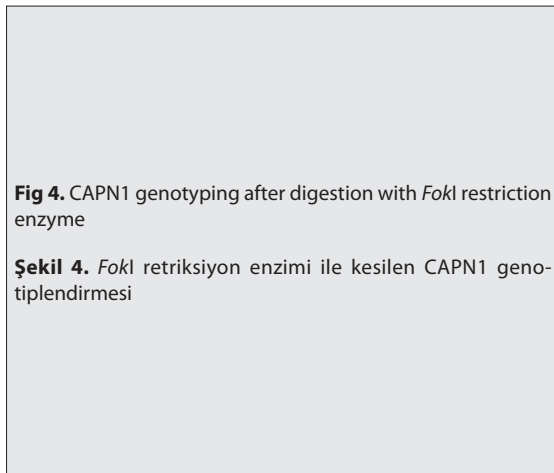
**Şekil 3.** *PstI* restriksiyon enzimi ile kesilen TG genotiplendirmesi

**Table 5.** Heterozygosity, allelic genotypes frequency of CAPN1 alleles C, T in five cattle breeds in Turkey

**Tablo 5.** Türkiye'deki 5 sığır ırkında CAPN1 geninin C, T allelik genotip frekansları, heterozigotlukları

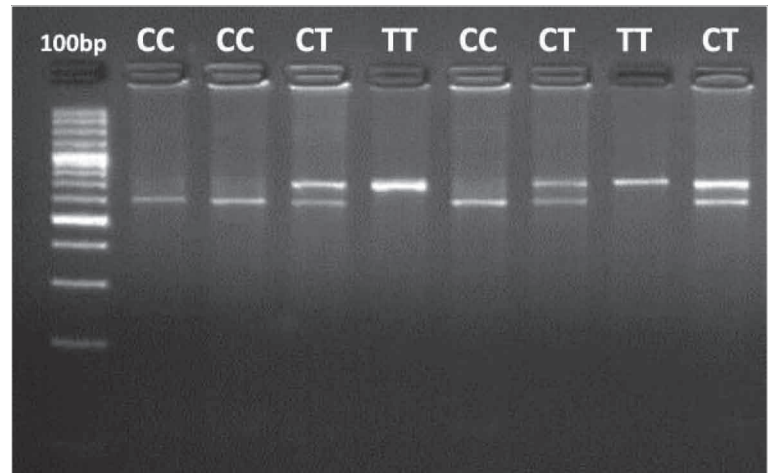
Gene	Breed	n	Allele Frequency		Genotype Frequency (%)			Heterozygosity		$\chi^2$ (df=1)
			C	T	CC	CT	TT	Ho	He	
CAPN1	TG	60	0.77	0.23	61.7	30.0	8.3	0.30	0.36	1.76 <sup>NS</sup>
	AB	59	0.75	0.25	66.2	16.9	16.9	0.17	0.38	18.82*
	Zavot	60	0.74	0.26	63.3	21.7	15.0	0.22	0.39	11.89*
	EAR	49	0.75	0.25	61.2	26.5	12.3	0.26	0.38	4.84*
	SAR	53	0.87	0.13	75.5	22.6	1.9	0.23	0.23	0.03 <sup>NS</sup>

\* ( $P < 0.05$ ); NS: nonsignificant



**Fig 4.** CAPN1 genotyping after digestion with *FokI* restriction enzyme

**Şekil 4.** *FokI* restriksiyon enzimi ile kesilen CAPN1 genotiplendirmesi

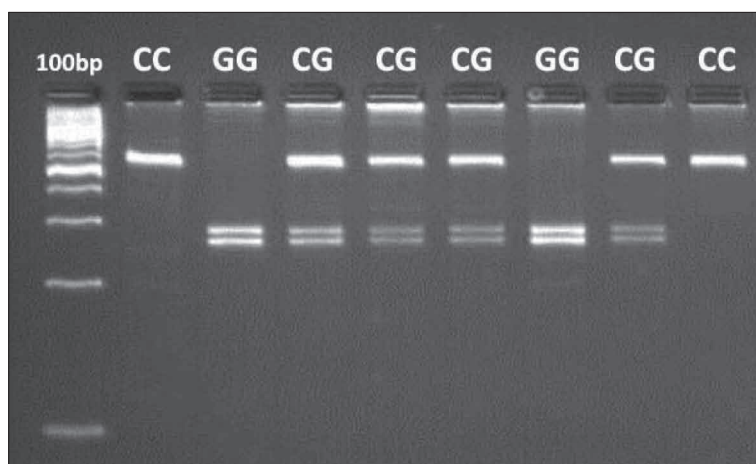


**Table 6.** Heterozygosity, allelic genotypes frequency of CAST alleles C, T in five cattle breeds in Turkey

**Tablo 6.** Türkiye'deki 5 sığır ırkında CAST geninin C, T allelik genotip frekansları, heterozigotlukları

Gene	Breed	n	Allele Frequency		Genotype Frequency (%)			Heterozygosity		$\chi^2$ (df=1)
			C	G	CC	GC	GG	Ho	He	
CAST	TG	60	0.60	0.40	35.0	50.0	15.0	0.50	0.48	0.07 <sup>NS</sup>
	AB	59	0.67	0.33	38.9	56.0	5.1	0.56	0.45	3.86*
	Zavot	60	0.68	0.32	46.7	43.3	10.0	0.43	0.44	0.01 <sup>NS</sup>
	EAR	49	0.61	0.39	38.8	44.9	16.3	0.45	0.48	0.21 <sup>NS</sup>
	SAR	53	0.66	0.34	47.2	37.7	15.1	0.38	0.45	1.51 <sup>NS</sup>

\* ( $P < 0.05$ ); NS: nonsignificant



**Fig 5.** CAST genotyping after digestion with *RsaI* restriction enzyme

**Şekil 5.** *RsaI* restriksiyon enzimi ile kesilen CAST genotiplendirilmesi

( $P < 0.05$ ). The frequency of the (C) allele was found to be higher than the (T) allele (Table 5).

### CAST Locus

The 523bp fragment of the CAST gene was digested with the *RsaI* restriction enzyme and a polymorphism with two alleles was detected. The CAST gene had three genotypes: CC (523 bp), CG (523 bp/266 bp/257 bp) and GG (266 bp/257 bp) (Fig. 5). Except for the AB breed, genotype frequencies were consistent with the HWE ( $P < 0.05$ ) (Table 6).

## DISCUSSION

In the last 50 years, the world has experienced very rapid population growth. In addition, the Food and Agriculture Organization of the United Nations reported that food demand will double around the world in the next 50 years. Moreover, it has been predicted that global meat consumption will increase 68% and global milk consumption will increase 57% by 2030 [18]. Outside Europe and North America, in countries like Turkey that have a large population land area, the demand for meat cannot be met only by European breeds such as the Holstein. Therefore, it is important to improve the productivity of native breeds. To this end, the use of molecular markers associated with meat and milk production provides new opportunities to improve native breeds.

In animal breeding, some genes have been proposed as potential candidates with respect to traits that enhance economic value, such as milk yield, meat productivity traits and beef tenderness [19]. In the present study, the genetic polymorphisms of the CAPN1, MSTN, TG, SPP1 and CAST genes were evaluated in the TG, AB, Zavot, EAR and SAR cattle breeds. We used PCR-RFLP analyses to identify the different genotypes of each gene in these five Turkish native cattle breeds.

The frequency of the CAPN1-T allele was found to be higher than the frequency of the C allele in the Nellore

breed (*Bos indicus*) [20,21] and its crossbreeds, where the different breeds originated from *Bos taurus* [20]. Additionally, the CC genotype was not found or was found to be lower than other genotypes in breeds that originated from Zebu [20,21]. Similarly, in purebred Brahmans (*Bos indicus*), the TT genotype was found to be most frequent, while the CC genotype was not found at all [22]. On the other hand, the T allele was found to be more frequent in beef cattle breeds such as Red Angus, Charolaise and Limousin breeds [23]. At the same time, in a study that examined more animals, the frequency of the C allele (0.577) was found to be higher than that of the T allele (0.423) in a population that consisted of *Bos Taurus* (Hereford, Angus, Red Angus, Limousin, Charolais, Gelbvieh and Simmental). In the same study, the frequency of the C allele (0.64) was found to be higher than that of the T allele (0.36) in a population that consisted of *Bos taurus* and *Bos indicus* (Hereford, Angus, Brangus, Beefmaster, Bonsmara, and Romosinuano) [22]. In the present study, the C allele was found to be more frequent than the T allele in five Turkish local cattle breeds when compared with the same European cattle breeds which originate from *Bos Taurus*. Furthermore, the CC genotype was found to be more frequent than other genotypes, while the TT genotype was found to be less frequent in five Turkish local cattle breeds. Therefore, it is thought that the TT genotype could be used to improve meat yield and flavour in Turkish local cattle breeds. To this end, the TT genotype frequency could be increased in Turkish local cattle breeds because the TT genotype is associated with favourable meat production traits that are important [22,24]. Furthermore, the CT and TT genotypes were associated with the best meat tenderness when compared with the CC genotype [24,25]. Despite the fact that the TT genotype frequency is low in Turkish local cattle breeds, this genotype was found to be have the lowest frequency in the SAR breed (0.019). This cattle breed is bred for milk and has a higher milk yield than that of other Turkish native cattle breeds. The second lowest genotype frequency was found in the TG breed (0.083), and in terms of milk yield, this breeds ranks second in Turkish native cattle breeds. Consistent with these

findings, the C allele was found to be higher in dairy cattle breeds such as Simmental, Black-and-White and Polish Red cattle breeds [23].

It has been determined that a mutation in the MSTN gene was associated with the double-muscle phenotype in the Piemontese cattle breed [26]. Subsequently, this mutation was found in the Belgian Blue [27] and South Devon [28] cattle breeds. However, this mutation was not reported in other cattle breeds including Turkish native cattle breeds [5]. This mutation was not found in the five Turkish native cattle breeds that were examined in this study. This provides strong evidence that this mutation is not present in Turkish native cattle breeds. Despite the fact that these mutations are associated with high carcass weight, they were found to be associated with increased calving difficulty and reduced meat flavour [29]. Therefore, this situation can be considered to be good for Turkish native cattle breeds, and leads to the conclusion that these cattle breeds have maintained their purity.

The TG gene in cattle was found to be not associated with the traits of daily weight gain, weight at slaughter, rib eye fat and rib eye area [30]. However, the TG genotypes were associated with the marbling score in beef cattle breeds such as Aberdeen Angus, Shorthorn and Waghu cattle [31], and the T allele was found to be associated with a higher marbling score [32]. On the other hand, the TT genotype of this gene was found to be associated with the thickness of back fat in beef cattle [30]. Additionally, it was reported that the TT genotype of this gene may be used in marker assisted selection (MAS) for higher intramuscular fat content as a desirable trait [33,34]. Therefore, it is thought that the detection of TG gene polymorphism can be used for efforts to improve beef quality traits and for characterizing Turkish native cattle breeds.

The frequency of the TG-TT genotype was either not found or found to be very low in many cattle breeds such as Holstein, indigenous Polish Red, Hereford, Limousin [35,36], Charolais, Simmental, Angus, Belgian Blue [36], Red Angus [34], indigenous Japan Wagyu cattle [37] and Korean native cattle [38]. The current study also found the TG-T allele frequency in five Turkish native cattle breeds to be lower than the C allele frequency. In addition, the TT genotype frequency was found to be lower than the frequency of other genotypes in the five Turkish native cattle breeds evaluated in this study. This study and other studies suggest that the TG-C allele can be considered to be predominant in cattle.

Osteopontin (OPN, also called secreted phosphoprotein 1 or SPP1) plays a role in different processes such as the regulation of growth and development of the fetus, initiation and maintenance of pregnancy, and proliferation and differentiation of the mammary gland in mammals [39,40]. Because it has so many tasks, it is thought that the OPN

gene could be used as a marker gene for milk performance traits [35], and growth [41]. It has been reported that the OPN (SPP1)-C allele has a positive effect on milk fat yield and milk protein content, while others report that it has a negative impact on milk yield [42]. In general, the frequency of the OPN (SPP1)-T allele was found to be higher than that of the C allele in different cattle breeds such as the Jersey [43], Holstein, Polish Red, Hereford and Limousin breeds [35]. In a study that examined EAR and SAR breeds, the T allele frequency was found to be higher than that of the C allele [44]. Similarly, the present study also found that the T allele frequency was higher than that of the C allele in the five Turkish native cattle breeds that were examined. Even in the SAR breed, which is known to be the most prevalent dairy breed of Turkish native cattle breeds, this rate was found to be over ninety percent.

The CAST gene has been associated with the trait of meat tenderness [45] and this gene has been suggested as a marker for tenderness [21,46]. The CAST-CC genotype has been found to be a desirable genotype for tenderness in many cattle breeds such as the Brahman, beef cattle crossbreeds [22,45], Nellore [21], Hanwoo (Korean cattle) [47], Red Angus, Charolais, Limousin, Simmental, Hereford, Polish Friesian and Polish Red [23]. Therefore, the CAST gene is important for work done to improve the quality of meat. The CAST-C allele frequency was found to be higher than that of the G allele in many cattle breeds which originated from *Bos taurus* [Hanwoo (Korean cattle) [47], Angus, Limousin, Charolais [45], Simmental, Hereford and Friesian [23]], *Bos indicus* [Nellore [21,48] and Brangus [48]], and *Bos taurus-Bos indicus* crossbreeds [Angus x Nellore, Rubia Gallega x Nellore and Canchim [48]]. In a previous study, the C allele frequency was found to be higher in the TG and TG x Brown Swiss crossbreeds [49]. Similarly, the CAST-C allele frequency was found to be higher in all Turkish native cattle breeds that were examined in the current study, as is the case with other cattle breeds. However, the CG genotype was found to be high, thus it is thought that the CAST gene could be used to improve the tenderness trait of Turkish native cattle breeds.

Many indigenous livestock breeds are still bred due to their adaptation traits and lower maintenance costs. However, the productivity of these breeds is lower than many European breeds. Despite this, the conservation and survival of the different genotypic variants in the genetic pool of a species is very important for genotyping livestock for selection against various infections, effects and environmental conditions. Further studies such as association analysis and QTL analysis are required to investigate the connection with productivity traits in native farm animal populations. In conclusion, this study has shown that genetic polymorphisms do not exist in the MSTN gene but do exist in the remaining four genes that were examined in five Turkish native cattle breeds.



## REFERENCES

1. **Lacorte GA, Machado MA, Martinez ML, Campos AL, Maciel RP, Verneque RS, Teodoro RL, Peixoto MGCD, Carvalho MRS, Fonseca CG:** DGAT1 K232A polymorphism in Brazilian cattle breeds. *Genet Mol Res*, 5 (3): 475-482, 2006.
2. **Goddard ME, Hayes BJ:** Mapping genes for complex traits in domestic animals and their use in breeding programmes. *Nat Rev Genet*, 10, 381-391, 2009. DOI: 10.1038/nrg2575
3. **Akyuz B, Agaoglu OK, Ertugrul O:** Genetic polymorphism of kappa-casein, growth hormone and prolactin genes in Turkish native cattle breeds. *Int J Dairy Technol*, 65, 38-44, 2012. DOI: 10.1111/j.1471-0307.2011.00732.x
4. **Korkmaz Ağaoglu Ö, Akyüz B:** Growth hormone gene polymorphism in four cattle breeds in Turkey. *Kafkas Univ Vet Fak Derg*, 19, 419-422, 2013. DOI: 10.9775/kvfd.2012.7961
5. **Şahin Ş, Öner Y, Elmacı C:** An investigation on gene regions related to some economic traits in Holstein and Brown Swiss cattle breeds by using PCR-RFLP technique. *J Agric Sci*, 19, 235-244, 2013.
6. **Akçay A, Akyüz B, Bayram D:** Determination of the Alu polymorphism effect of bovine growth hormone gene on 1 carcass traits in Zavat cattle with analysis of covariance. *Turk J Vet Anim Sci*, 39, 16-22, 2015, DOI: 10.3906/vet-1404-29
7. **Sorimachi H, Freiburg A, Kolmerer B, Ishiura S, Stier G, Gregorio CC, Labeit D, Linke WA, Suzuki K, Labeit S:** Tissue-specific expression and  $\alpha$ -actin binding properties of the Z-disc titin: Implications for the nature of vertebrate Z-discs. *J Mol Biol*, 270, 688-695, 1997.
8. **Suzuki K, Sorimachi H:** A novel aspect of calpain activation. *FEBS Letters*, 433, 1-4, 1998. DOI: 10.1016/S0014-5793(98)00856-4
9. **Smith TPL, Casas E, Rexroad CE, Kappes SM, Keele JW:** Bovine CAPN1 maps to a region of BTA29 containing a quantitative trait locus for meat tenderness. *J Anim Sci*, 78, 2589-2594, 2000.
10. **Hanset R, Michaux C, Dessy-Doize C, Burtonboy G:** Studies on the 7<sup>th</sup> rib cut in double muscled and conventional cattle. Anatomical, histological and biochemical aspects. In: King JWB, Menissier F (Eds): Muscle Hypertrophy of Genetic Origin and Its Use to Improve Beef Production. 341-349, Martinus Nijhoff, The Hague, The Netherlands, 1982.
11. **Arthur PF:** Double muscling in cattle: A review. *Aust J Agr Res*, 46, 1493-1515, 1995.
12. **Senger DR, Wirth DF, Hynes RO:** Transformed mammalian cells secrete specific proteins and phosphoproteins. *Cell*, 16, 885-893, 1979. DOI: 10.1016/0092-8674(79)90103-X
13. **Denhardt DT, Guo X:** Osteopontin: A protein with diverse functions. *FASEB J*, 7, 1475-1482, 1993.
14. **Schnabel RD, Kim, JJ, Ashwell MS, Sonstegard TS, Van Tassell CP, Connor EE, Taylor JF:** Fine-mapping milk production quantitative trait loci on BTA6: Analysis of the bovine osteopontin gene. *Proc Natl Acad Sci USA*, 102, 6896-6901, 2005. DOI: 10.1073/pnas.0502398102
15. **Khatib H, Zaitoun I, Wiebelhaus-Finger J, Chang YM, Rosa GJ:** The association of bovine PPARGC1A and OPN genes with milk composition in two independent Holstein cattle populations. *J Dairy Sci*, 90, 2966-2970, 2007. DOI: 10.3168/jds.2006-812
16. **Koohmaraie M:** Biochemical factors regulating the toughening and tenderization process of meat. *Meat Sci*, 43, 193-201, 1996. DOI: 10.1016/0309-1740(96)00065-4
17. **Yeh F, Yang RC, Boyle T:** Popgene (v.1.32), Microsoft Windows-based freeware for Population Genetic Analysis, 2000. <http://www.ualberta.ca/~fyeh/Pop32.exe>, Accessed: 31.08.2014
18. **Steinfeld H, Gerber P:** Livestock production and the global environment: Consume less or produce better? *Proc Natl Acad Sci USA*, 107, 18237-18238, 2010. DOI: 10.1073/pnas.1012541107
19. **Lara MAC, Gama LT, Bufarah G, Sereno JRB, Celegato EML, De Abreu UP:** Genetic polymorphisms at the  $\kappa$ -casein locus in Pantaneiro cattle. *Arch Zootec*, 51, 99-105, 2002.
20. **Curi RA, Chardulo LAL, Mason MC, Arrigoni MDB, Silveira AC, de Oliveira HN:** Effect of single nucleotide polymorphisms of CAPN1 and CAST genes on meat traits in Nellore beef cattle (*Bos indicus*) and in their crosses with *Bos taurus*. *Anim Genet*, 40, 456-462, 2009. DOI: 10.1111/j.1365-2052.2009.01859.x
21. **Pinto LFB, Ferraz JBS, Meirelles FV, Eler JP, Rezende FM, Carvalho ME, Almeida HB, Silva RCG:** Association of SNPs on CAPN1 and CAST genes with tenderness in Nellore cattle. *Genet Mol Res*, 9, 1431-1442, 2010. DOI: 10.4238/vol9-3gmr881
22. **Casas E, White SN, Wheeler TL, Shackelford SD, Koohmaraie M, Riley DG, Chase CC, Jr Johnson DD, Smith TPL:** Effects of *calpastatin* and  $\mu$ -*calpain* markers in beef cattle on tenderness traits. *J Anim Sci*, 84, 520-525, 2006.
23. **Juszczuk-Kubiak E, Sakowski T, Flisikowski K, Wicińska K, Oprządek J, Rosochacki SJ:** Bovine  $\mu$ -calpain (CAPN1) gene: New SNP within intron 14. *J Appl Genet*, 45, 457-460, 2004.
24. **Oprządek J, Flisikowski K, Zwierzchowski L, Juszczuk-Kubiak E, Rosochacki S, Dymnicki E:** Associations between polymorphism of some candidate genes and growth rates, feed intake and utilisation, slaughter indicators and meat quality in cattle. *Arch Tierz Dummerstorf*, 48, 81-87, 2005.
25. **White SN, Casas E, Wheeler TL, Shackelford SD, Koohmaraie M, Riley DG, Chase CC Jr, Johnson DD, Keele JW, Smith TP:** A new single nucleotide polymorphism in CAPN1 extends the current tenderness marker test to include cattle of *Bos indicus*, *Bos taurus*, and crossbred descent. *J Anim Sci*, 83, 2001-2008, 2005.
26. **Grobet L, Martin LJR, Poncelet D, Pirottin D, Brouwers B, Riquet J, Schoeberlein A, Dunner S, Ménissier F, Massabanda J, Fries R, Hanset R, Georges M:** A deletion in the bovine myostatin gene causes the double-muscled phenotype in cattle. *Nat Genet*, 17, 71-74, 1997. DOI: 10.1038/ng0997-71
27. **Kambadur R, Sharma M, Smith TPL, Bass JJ:** Mutations in myostatin (GDF8) in double-muscled Belgian blue and Piedmontese cattle. *Gen Res*, 7, 910-916, 1997. DOI: 10.1101/gr.7.9.910
28. **Smith JA, Lewis AM, Wiener P, Williams JL:** Genetic variation in the bovine myostatin gene in UK beef cattle: Allele frequencies and haplotype analysis in the South Devon. *Anim Genet*, 31, 306-309, 2000. DOI: 10.1046/j.1365-2052.2000.00521.x
29. **Wiener P, Woolliams JA, Frank-Lawale A, Ryan M, Richardson RI, Nute GR, Wood JD, Homer D, Williams JL:** The effects of a mutation in the myostatin gene on meat and carcass quality. *Meat Sci*, 83, 127-134, 2009. DOI: 10.1016/j.meatsci.2009.04.010
30. **Casas E, White SN, Riley DG, Smith TP, Breneman RA, Olson TA, Johnson DD, Coleman SW, Bennett GL, Chase CC:** Assessment of single nucleotide polymorphisms in genes residing on chromosomes 14 and 29 for association with carcass composition traits in *Bos indicus* cattle. *J Anim Sci*, 83, 13-19, 2005.
31. **Barendse WJ, Bunch R, Thomas M, Armitage S, Baud S, Donaldson N:** The TG5 thyroglobulin gene test for a marbling quantitative trait loci evaluated in feedlot cattle. *Aust J Exp Agr*, 44, 669-674, 2004. DOI: 10.1071/EA02156
32. **Gan QF, Zhang LP, Li JY, Hou GY, Li HD, Gao X, Ren HY, Chen JB, Xu SZ:** Association analysis of thyroglobulin gene variants with carcass and meat quality traits in beef cattle. *J Appl Genet*, 49, 251-255, 2008. DOI: 10.1007/BF03195621
33. **Bonilla CA, Rubio MS, Sifuentes AM, Parra-Bracamonte GM, Arellano VW, Méndez MRD, Berruecos JM, Ortiz R:** Association of CAPN1 316, CAPN1 4751 and TG5 markers with bovine meat quality traits in Mexico. *Genet Mol Res*, 9, 2395-2405, 2010. DOI: 10.4238/vol9-4gmr959
34. **Anton I, Kovács K, Holló G, Farkas V, Lehel L, Hajda Z, Zsolnai A:** Effect of leptin, DGAT1 and TG gene polymorphisms on the intramuscular fat of Angus cattle in Hungary. *Livestock Sci*, 135, 300-303, 2011. DOI: 10.1016/j.livsci.2010.07.012
35. **Pareek CS, Czarnik U, Pierzchała M, Zwierzchowski L:** An association between the C>T single nucleotide polymorphism within intron IV of osteopontin encoding gene (SPP1) and body weight of growing Polish Holstein-Friesian cattle. *Anim Sci Pap Rep*, 26, 251-257, 2008.



- 36. Pannier L, Mullen AM, Hamill RM, Stapleton PC, Sweeney T:** Association analysis of single nucleotide polymorphisms in DGAT1, TG and FABP4 genes and intramuscular fat in crossbred *Bos Taurus* cattle. *Meat Sci*, 85, 515-518, 2010. DOI: 10.1016/j.meatsci.2010.02.025
- 37. Casas E, White SN, Shackelford SD, Wheeler TL, Koohmaraie M, Bennett GL, Smith TPL:** Assessing the association of single nucleotide polymorphisms at the thyroglobulin gene with carcass traits in beef cattle. *J Anim Sci*, 85, 2807-2814, 2007. DOI: 10.2527/jas.2007-0179
- 38. Shin SC, Chung ER:** Association of SNP marker in the thyroglobulin gene with carcass and meat quality traits in Korean cattle. *Asian-Aust J Anim Sci*, 20 (2): 172-177, 2007.
- 39. Johnson GA, Burghardt RC, Bazer FW, Spencer TE:** Osteopontin: Roles in implantation and placentation. *Biol Reprod*, 69, 1458-1471, 2003. DOI: 10.1095/biolreprod.103.020651
- 40. Nagatomo T, Ohga S, Takada H, Nomura A, Hikino S, Imura M, Ohshima K, Hara T:** Microarray analysis of human milk cells: Persistent high expression of osteopontin during the lactation period. *Clin Exp Immunol*, 138, 47-53, 2004. DOI: 10.1111/j.1365-2249.2004.02549.x
- 41. Allan MF, Thallman RM, Cushman RA, Echterkamp SE, White SN, Kuehn LA, Casas E, Smith TPL:** Association of a single nucleotide polymorphism in SPP1 with growth traits and twinning in a cattle population selected for twinning rate. *J Anim Sci*, 85, 341-347, 2007. DOI: 10.2527/jas.2006-460
- 42. Leonard S, Khatib H, Schutzkus V, Chang YM, Maltecca C:** Effects of the osteopontin gene variants on milk production traits in dairy cattle. *J Dairy Sci*, 88, 4083-4086, 2005. DOI: 10.3168/jds.S0022-0302(05)73092-7
- 43. Kowalewska-Łuczak I, Kulig H:** Genetic polymorphisms of *FAM13A1*, *OPN*, *LAP3*, and *HCAP-G* genes in Jersey cattle. *Turk J Vet Anim Sci*, 37, 631-635, 2013.
- 44. Oztabak K, Un C, Tesfaye D, Akis I, Mengi A:** Genetic polymorphisms of osteopontin (OPN), prolactin (PRL) and pituitary-specific transcript factor-1 (PIT-1) in South Anatolian and East Anatolian Red cattle. *Acta Agr Scand SA*, 58, 109-112, 2008. DOI: 10.1080/09064700802357771
- 45. Schenkel FS, Miller SP, Jiang Z, Mandell IB, Ye X, Li H, Wilton JW:** Association of a single nucleotide polymorphism in the calpastatin gene with carcass and meat quality traits of beef cattle. *J Anim Sci*, 84, 291-299, 2006.
- 46. Li YX, Jin HG, Yan CG, Seo KS, Zhang LC, Ren CY, Jin X:** Association of CAST gene polymorphisms with carcass and meat quality traits in Yanbian cattle of China. *Mol Biol Rep*, 40, 1875-1881, 2013. DOI: 10.1007/s11033-012-2243-2
- 47. Chung H, Davis M:** Effects of genetic variants for the calpastatin gene on calpastatin activity and meat tenderness in Hanwoo (Korean cattle). *Meat Sci*, 90, 711-714, 2012. DOI: 10.1016/j.meatsci.2011.10.017
- 48. Curi RA, Chardulo LAL, Giusti J, Silveira AC, Martins CL, Oliveira HN:** Assessment of GH1, CAPN1 and CAST polymorphisms as markers of carcass and meat traits in *Bos indicus* and *Bos taurus-Bos indicus* cross beef cattle. *Meat Sci*, 86, 915-920, 2010. DOI: 10.1016/j.meatsci.2010.07.016
- 49. Kök S, Atalay S, Savaşçı M, Eken HS:** Characterization of calpastatin gene in purebred and crossbred Turkish Grey Steppe cattle. *Kafkas Univ Vet Fak Derg*, 19, 203-206, 2013. DOI: 10.9775/kvfd.2012.7470