


## Toxic Effects of Cadmium Sulphate on Tissue Histopathology and Serum Protein Expression in European Chub, *Leuciscus cephalus* (Linnaeus, 1758)

Muhitdin YILMAZ \*  Yusuf ERSAN \* Evren KOÇ \*\*  
Hasan ÖZEN \*\*\* Musa KARAMAN \*\*\*

\* Kafkas University, Faculty of Science and Art, Department of Biology, TR-36100 Kars - TURKEY

\*\* Kafkas University, Faculty of Veterinary Medicine, Department of Physiology TR-36100 Kars - TURKEY

\*\*\* Kafkas University, Faculty of Veterinary Medicine, Department of Pathology, TR-36100 Kars - TURKEY

Makale Kodu (Article Code): KVFD-2011-4022

### Summary

Effects of high water cadmium sulphate hydrate ( $3\text{CdSO}_4 \cdot 8\text{H}_2\text{O}$ ) ( $\text{CdSO}_4$ ) levels on the expression of serum proteins and tissue histopathology of the European chub (*Leuciscus cephalus*) was investigated. Three groups of fish (control, 1<sup>st</sup>, and 2<sup>nd</sup>), each containing 10 animals, were placed in separate tanks containing no, 1 mg/L, and 2 mg/L  $\text{CdSO}_4$ , respectively, for 10 days. At the end of the study period, blood samples were taken and sodium dodecyl sulphate-polyacrylamide gel electrophoresis (SDS-PAGE) was performed. Fish tissue samples were taken then routinely processed and stained with hematoxylin and eosin to observe histopathological changes. Depending on the increasing concentration of  $\text{CdSO}_4$ , a gradual decrease in protein bands was determined. Inhibition of 35.3 kilodalton (kD) and 100.5 kD proteins in the 1<sup>st</sup> group and of 44.5 kD and 47.3 kD proteins in the 2<sup>nd</sup> group was detected. Microscopic examination revealed degeneration in the secondary lamellar epithelia, hydropic degeneration and necrosis in chloride cells of the fish gill in  $\text{CdSO}_4$  given groups. Hydropic degeneration and necrosis were also observed in light to severe levels in the liver depending on the groups. It was concluded that  $\text{CdSO}_4$  has toxic effects on the expression of serum proteins and causes degenerative changes on gill and liver morphology in *Leuciscus cephalus*.

**Keywords:** Cadmium sulphate, Serum protein, SDS-PAGE, Histopathology, *Leuciscus cephalus*

## Kadmiyum Sülfat'ın Avrupa Tatlısu Kefali, *Leuciscus cephalus* (Linnaeus, 1758)'un Doku Histopatolojisi ve Serum Protein Ekspresyonu Üzerine Toksik Etkileri

### Özet

Yüksek düzeylerde kadmiyum sülfat hidrat ( $3\text{CdSO}_4 \cdot 8\text{H}_2\text{O}$ ) ( $\text{CdSO}_4$ ) içeren suyun Avrupa tatlısu kefali (*Leuciscus cephalus*)'nin doku histopatolojisi ve serum proteinlerinin ekspresyonu üzerine etkileri araştırıldı. Balıklar her grupta 10 hayvan bulunan 3 gruba ayrıldı (kontrol grubu, 1. grup ve 2. grup) ve sırasıyla  $\text{CdSO}_4$  içermeyen, 1 mg/L, and 2 mg/L  $\text{CdSO}_4$  içeren tanklarda 10 gün süreyle bekletildi. Çalışma süresi sonunda, kan örnekleri alınarak sodyum dodesil sülfat-poliakrilamid jel elektroforezi (SDS-PAGE) yapıldı. Daha sonra balıklardan alınan doku örnekleri rutin yöntemlerle hematoksilen ve eozin ile boyanarak histopatolojik değişiklikler izlendi.  $\text{CdSO}_4$  konsantrasyonundaki artışa bağlı olarak protein bantlarında kademeli bir inceleme tespit edildi. 1. grupta 35.3 kD ve 100.5 kD'luk proteinlerde, 2. grupta da 44.5 kD ve 47.3 kD'luk proteinlerde inhibisyon tespit edildi. Mikroskopik incelemede ise  $\text{CdSO}_4$  verilen balıkların solungaç dokusunda sekonder lamel epitelinde dejenerasyonla birlikte klorid epitel hücrelerinde de nekroz ve hidropik dejenerasyon tespit edildi. Karaciğer dokusunda da gruplarda önemli seviyelerde hidropik dejenerasyon ve nekroz gözlemlendi.  $\text{CdSO}_4$ 'ün *Leuciscus cephalus*'da toksik etki yaparak serum proteinlerinin ekspresyonları, karaciğer ve solungaç morfolojisi üzerinde dejeneratif değişikliklere neden olduğu sonucuna varılmıştır.

**Anahtar sözcükler:** Kadmiyum sülfat, Serum protein, SDS-PAGE, Histopatoloji, *Leuciscus cephalus*



İletişim (Correspondence)



+90 474 2426800



muhittinyilmaz@gmail.com

## INTRODUCTION

Cadmium (Cd) is an abundantly toxicant substance in the aquatic environment. As a non-degradable cumulative pollutant, it presents a significant health problem in living organisms. It is a widely used heavy metal in ship building, batteries, dying and electronic industries<sup>1</sup>. Water pollution of the metal mostly becomes leaches from these industries.

Cadmium in water is taken in through respiration and digestion and then it passes through other organs. Liver plays a major role in detoxification through inducing the expression of metal binding molecule metallothionein<sup>2</sup>. Later, Cd-metallothionein complex enters the blood. Although liver involves in Cd detoxification the metal builds up mostly in kidney causing renal tubular degeneration especially in chronic toxicities<sup>3-5</sup>.

Studies on Cd toxicity are quite limited compared to the other metals. In this study, effects of high CdSO<sub>4</sub> exposure on the tissue histopathology and the expression of serum proteins of *Leuciscus cephalus* were investigated.

## MATERIAL and METHODS

### Experimental Design

Thirty *Leuciscus cephalus*, weighing 125-234 g, were caught by electro shocker in Kars Stream, Turkey. Water quality of the river during the collection of fish was as follow; pH 7.8-8.0, dissolved oxygen 5.1-8.8 mg/L, mean conductivity 210 ms/cm<sup>2</sup>, mean ammonium (NH<sub>3</sub>) 414 µg/L, total phosphate (PO<sub>4</sub>) 56.6 µg/L, nitrate (NO<sub>3</sub>) 0.245 mg/L and temperature 17-18.5°C. Cadmium levels in the edible muscle tissues of *Capoeta capoeta capoeta* in Kars creek were found to be 0.0018-0.0029 µg<sup>-1</sup><sup>6</sup>.

Fish were divided into three equal groups and placed in 500-L aquariums. Water temperature was adjusted to 18±1°C with a thermostatic thermometer and dissolved oxygen was supplied at 5±0.3 mg/L concentration in the aquariums. While fish in control group were kept in tap water with no additional cadmium in it fish in 1<sup>st</sup> and 2<sup>nd</sup> groups were placed in aquariums containing 1 mg/L and 2 mg/L cadmium sulphate hydrate (3CdSO<sub>4</sub> \* 8H<sub>2</sub>O) (Merck, 102027), respectively, for 10 days. The fish were fed daily with standard fish-feed.

### SDS-PAGE

At the end of the study period, blood samples were taken from the dorsal aorta of fish and then immediately centrifuged for 10 min at +4°C and 805X g. Serums were removed and total protein amounts were measured by the biurate method<sup>7</sup>. Afterwards, serum proteins were modified by Laemmli<sup>8</sup> and O'Farrell<sup>9</sup> methods, and sodium dodecyl sulphate-polyacrylamide gel electrophoresis (SDS -PAGE) was performed. The gels were photographed, and

molecular weights of proteins were calculated<sup>10</sup>. Calf albumin (66 kD), egg albumin (45 kD), glyseraldehyde-3-phosphate dehydrogenase (36 kD) and β-lactoglobulin (18 kD) were used as standard proteins.

### Histopathology

Fish were dissected without using anesthetic agent and then tissue samples were collected and fixed in 10% phosphate buffered formaldehyde solution. Gill samples were decalcified with Osteodec (Bio-Optica, Italy). Paraffin blocks were prepared and sections of 4-5 µm thickness were taken. Tissue sections were stained with hematoxylin and eosin, and examined under a light microscope to observe histopathological changes.

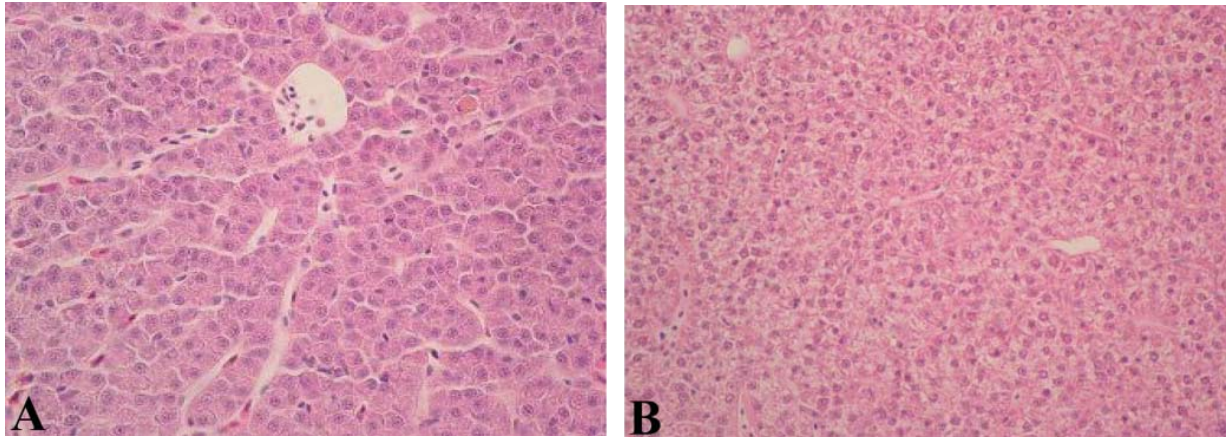
## RESULTS

In microscopic examination, while liver samples did not change in the control group (*Fig. 1A*), the histopathologic changes have occurred in the trial groups exposed to CdSO<sub>4</sub>. Light to moderate degeneration in the 1<sup>st</sup> group and moderate to severe degeneration in the 2<sup>nd</sup> group was observed in liver. Although degenerate and necrotic cells were present in both groups, compared to the 1<sup>st</sup> group (*Fig. 1B*) seemingly a proportional increase in the amount of necrotic cells as well as increased Kupffer cell activation was noted in the 2<sup>nd</sup> group (*Fig. 1C*). Localization of necrotic cells did not show any apparent presentation. Gill histology also changed, compared to the control (*Fig. 2A*), in CdSO<sub>4</sub> exposed fish. Hydropic degeneration was the main finding in gills in the 1<sup>st</sup> group (*Fig. 2B*). In the 2<sup>nd</sup> group, hydropic degeneration and necrosis were observed in the secondary lamellar epithelia as well as swelling of chloride cells (*Fig. 2C*). The severity of the changes in gills was also increased with the higher test dose.

Electrophoretic separation of serum proteins revealed inhibitions in the expression of proteins with molecular weights of 100.5 kD and 35.3 kD in the 1<sup>st</sup> group and 47.3 kD and 44.5 kD in the 2<sup>nd</sup> group compared to the control group (*Fig. 3*).

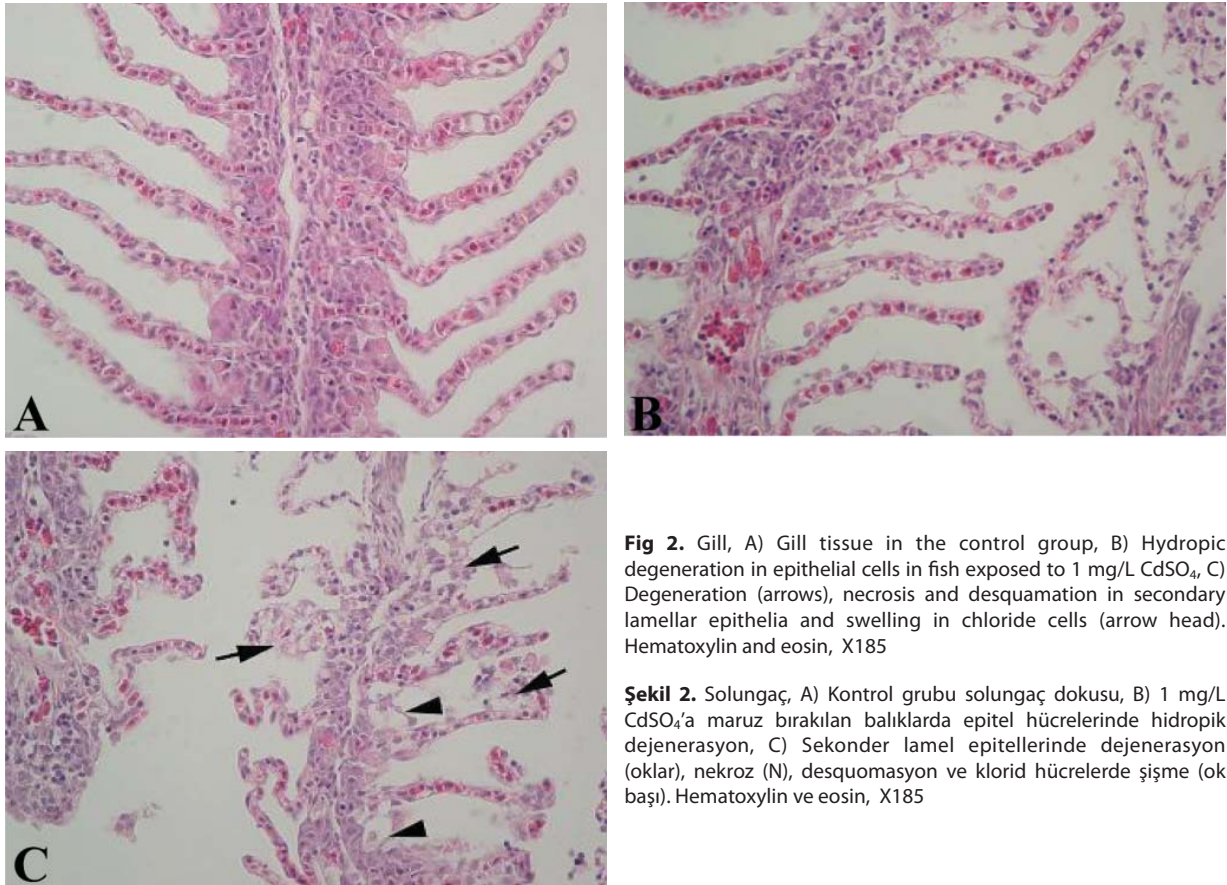
## DISCUSSION

Metal toxicities in fish have dual importance due to the effects caused in fish themselves and humans that consumed them. Many metals, alone or in combination, have been studied on many different kinds of fish. In a study, effects of CoCl<sub>2</sub> on *Capoeta capoeta capoeta* were investigated, and thinnings in various protein types were observed in experimental groups in comparison to the control group, formation of a 32.4 kD, 33.3 kD, 30.6 kD, and 28.2 kD new protein bands in the groups that CoCl<sub>2</sub> applied, however, an increase in the level of degeneration in the livers and intestines tissues of the experimental fish groups in parallel to the increase of the dose were



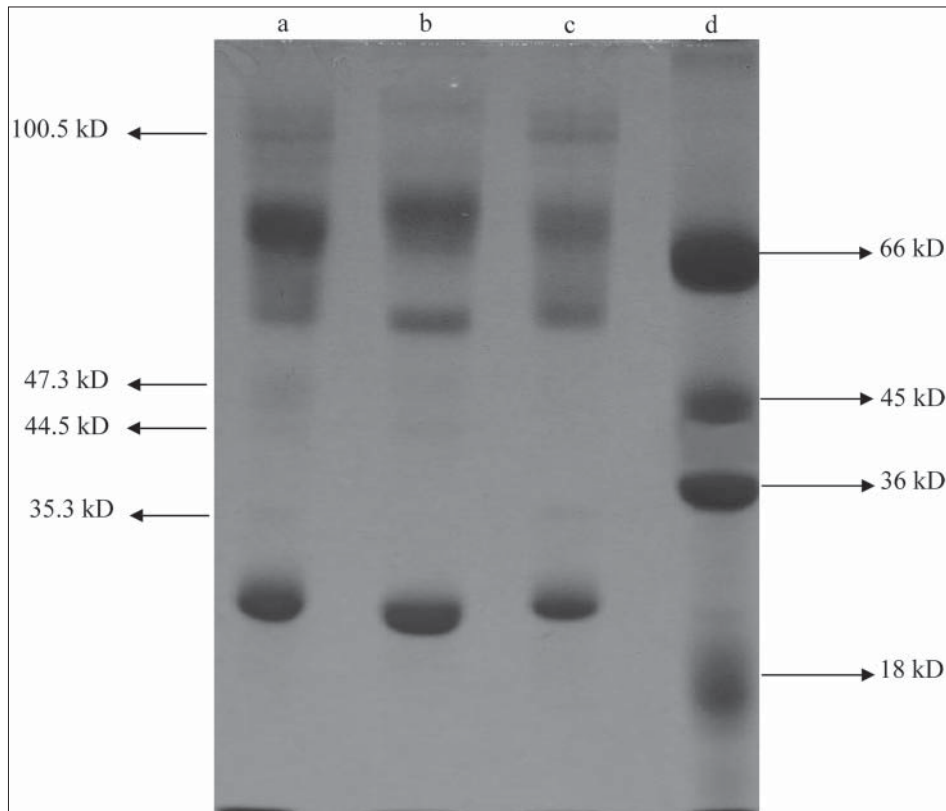
**Fig 1.** Liver, A) Normal tissue architecture in the control group, B) Degeneration and necrosis in fish exposed to 1 mg/L CdSO<sub>4</sub>, C) Necrosis (N) and degeneration (arrows) of hepatocytes in the liver and increase in Kupffer cell activation in the fish exposed to 2 mg/L CdSO<sub>4</sub>. Hematoxylin and eosin, X185

**Şekil 1.** Karaciğer, A) Kontrol grubunda normal doku yapısı, B) 1 mg/L CdSO<sub>4</sub>'a maruz kalan balıklarda nekroz ve de-jenerasyon, C) 2 mg/L CdSO<sub>4</sub>'a maruz kalan balıkların karaciğerinde hepato-sitlerde nekroz (N), dejenerasyon (oklar) ve kupffer hücre aktivasyonunda artış. Hematoxylin ve eosin, X185



**Fig 2.** Gill, A) Gill tissue in the control group, B) Hydropic degeneration in epithelial cells in fish exposed to 1 mg/L CdSO<sub>4</sub>, C) Degeneration (arrows), necrosis and desquamation in secondary lamellar epithelia and swelling in chloride cells (arrow head). Hematoxylin and eosin, X185

**Şekil 2.** Solungaç, A) Kontrol grubu solungaç dokusu, B) 1 mg/L CdSO<sub>4</sub>'a maruz bırakılan balıklarda epitel hücrelerinde hidropik dejenerasyon, C) Sekonder lamel epitellerinde dejenerasyon (oklar), nekroz (N), desquomasyon ve klorid hücrelerde şişme (ok başı). Hematoxylin ve eosin, X185



**Fig 3.** Electrophoregram obtained from the SDS-PAGE of the serums of fish exposed to CdSO<sub>4</sub>. a- Control group; b- 1 mg/L dose group; c- 2 mg/L dose group; d- Standard proteins

**Şekil 3.** CdSO<sub>4</sub>'a maruz bırakılan balıkların serum proteinlerinin SDS-PAGE'den elde edilen elektroforegramı. a- Kontrol grubu; b- 1 mg/L'lik grup; c- 2 mg/L'lik grup; d- Standart proteinler

reported<sup>11</sup>. In another study, Cobalt-*p*-hydroxybenzoate (CoPHB) exposure in *Capoeta capoeta capoeta*, and compared to control, over-expression and inhibition of proteins with 85.8, 82.6, 73.9, 68.5 kD and 23.0 and 15.2 kD molecular weights in the CoPHB groups. Also, depending on the application of cobalt in liver, intestine and gill tissue degeneration has been reported<sup>12</sup>.

In this study, the effects of CdSO<sub>4</sub> exposure on the expression of serum proteins and tissue morphology in *Leuciscus cephalus* were investigated.

In the present study, microscopic examinations of the CdSO<sub>4</sub> exposed fish were revealed hydropic degeneration and necrosis of the secondary lamellar epithelia and swelling of chloride cells. Although similar results with Cd exposure were seen in other studies on different species of fish, many other histopathological changes were also reported. Cd exposure of *Gnathonemus petersii* at 1 mg/L concentration for 6 h was reported to cause big sub-epithelial spaces in the secondary lamella of gills and at 10 mg/L concentration lamellar aneurysm was shown<sup>13</sup>. In *Oreochromis niloticus*, 25 mg/L CdCl<sub>2</sub> for 4 days caused interstitial edema, swelling of lamella, lifting and cellular proliferation of the filamentar epithelium, lamellar fusion as a result of epithelial hyperplasia and hypertrophy, breakdown of pillar cell system, and aneurysms with some ruptures and necrosis, especially in the filamentar epithelium<sup>14</sup>. In another study, 630 and 840 µg/L CdCl<sub>2</sub> exposure in *Puntius conchoni* resulted in decomposition in the secondary lamellar epithelium of gills, necrosis, cellular debris

accumulation, capillary congestion and milting in pillar cell system, partial to total fusion in secondary lamella along with hyperplasia and hypertrophy in chloride cells<sup>15</sup>. In a study conducted by Thophon et al.<sup>16</sup>, *Lates calcarifer* was exposed to CdCl<sub>2</sub> for either 10 mg/L for 96 h or 0.8 mg/L for 90 days. In gills, deterioration in pillar cell system as well as edema in epithelial cells, aneurysm in some ruptures of epithelial and chloride cells, and hyperplasia and hypertrophy was observed.

Gill is known to be one of the most affected organs in many types of toxicities since it is the port of entry of the toxicants dissolved in water. Degeneration of this organ, in general, results in unbalanced oxygen delivery, which then might trigger other functional problems in other metabolic organs such as liver and kidney. The severity of the lesions observed in gill cells in this investigation was comparably lower than the described in the literature. This might be explained by lower toxic potential of Cd in *Leuciscus cephalus*.

Degeneration and necrosis of liver cells were also detected in the current experiment. In the study of Thophon et al.<sup>16</sup>, congestion in liver sinusoids, hydropic swelling and vacuolization in hepatocytes, and dark granule accumulation were reported. In the subchronic application, lipid droplets and glycogen content were also recorded in hepatocytes.

Liver is known to play a major role in detoxification process of Cd like many other metals. However,

investigations studying the detoxification function of liver were showed controversial results making difficult to analyze the findings. In a study, CdCl<sub>2</sub> exposure was reported to increase activities of catalase, superoxide dismutase and glutathione peroxidase in liver of *Salaria basilisca*<sup>17</sup>. Similarly, increased liver activities of glutathione and glucose-6-phosphate dehydrogenase were detected in *Oreochromis niloticus*<sup>18</sup>. Contrary to these studies, liver activities of catalase, superoxide dismutase and glutathione peroxidase were detected to decrease in *Oncorhynchus mykiss*<sup>19</sup> and *Carassius auratus gibelio*<sup>20</sup>. However, changes in liver metallothionein, glutathione-S-transferase, alanine aminotransferase and aspartate aminotransferase levels clearly indicates liver involvement in Cd metabolism<sup>21-23</sup>.

Serum or organ proteins of fish are occasionally studied to estimate the toxic potential of many substances including metals<sup>24-26</sup>. Results of such investigations are valuable in observing the proteins involved in the metabolism of the toxic substance. CdCl<sub>2</sub> and ZnCl<sub>2</sub> exposure of chinook salmon embryo cells were shown to increase the expression of proteins with molecular weights of 84, 70, 68, 51, 46 and 28 kD. Increased expression of 10 kD metallothionein was also detected<sup>27</sup>. In the present study, expression of proteins with molecular weights of 100.5 and 35.3 kD in the 1<sup>st</sup> group and 47.3 and 44.5 kD in the 2<sup>nd</sup> group were determined to be inhibited compared to the control fish.

In conclusion, limited lesions observed in liver and gill and absence of other organ involvement such as kidney, which was reported in many other fish species, and absence of increased metallothionein expression indicates that CdSO<sub>4</sub> has limited toxic effects on *Leuciscus cephalus*. However, changing pattern of serum proteins expression depending on the dosage might suggest that different competing mechanisms involve in Cd toxicity under the studied test conditions.

## REFERENCES

- 1. ATSDR:** Public health statement for cadmium. <http://www.atsdr.cdc.gov/phs/phs.asp?id=46&tid=15>, 2008, Accessed: November 13, 2010.
- 2. Kayhan FE:** Bioaccumulation and toxicity of cadmium in the water products. *E U J Fish Aquat Sci*, 23 (1-2): 215-220, 2006 (In Turkish).
- 3. De Conto Cinier C, Ramel MP, Faure R, Garin D, Bouvet Y:** Kinetics of Cd accumulation and elimination in Carp *Cyprinus carpio* tissues. *Comp Biochem Physiol C: Pharmacol Toxicol Endocrinol*, 122, 345-352, 1999.
- 4. Wu SM, Weng CF, Yu MJ, Lin CC, Chen ST, Hwang JC, Hang PP:** Cadmium-inducible metallothionein in Tilapia (*Oreochromis mossambicus*). *Bull Environ Contam Toxicol*, 62, 758-768, 1999.
- 5. De Smet H, De Wachler B, Lobinski R, Blust R:** Dynamics of (Cd-Zn)-Metallothionein in gills, liver and kidney of Common carp *Cyprinus carpio* during Cd exposure. *Aquat Tox*, 52, 269-281, 2001.
- 6. Karakus S, Gey H:** A preliminary study of heavy metals in transcaucasian barb (*Capoeta capoeta capoeta*, Guldenstaedt, 1772) from the Kars creek, Turkey. *Revue Méd Vét*, 157 (11): 551-556, 2006.
- 7. Robert R, Michael JD:** Enzyme assays. pp. 225-332, Oxford University Press, New York, 1993.
- 8. Laemmli UK:** Cleavage of structural proteins during the assembly of the head of bacteriophage T4. *Nature*, 227 (5259): 680-685, 1970.
- 9. O'Farrell PH:** High resolution two-dimensional electrophoresis of biological properties and significance. *Comp Biochem Physiol*, 88, 497-501, 1975.
- 10. Weber K, Pringle J, Osborn M:** Measurement of molecular weights by electrophoresis on SDS-acrilamide gel. *Meth Enzimol*, 26, 3-27, 1972.
- 11. Bayram Y, Yilmaz M, Ersan Y, Koç E, Baysal A:** Toxic effects of cobalt II chloride on tissue histopathology and serum proteins in *Capoeta capoeta capoeta* (Guldenstaedt 1772). *Kafkas Univ Vet Fak Derg*, 16 (B): 259-263, 2010.
- 12. Yilmaz M, Ersan Y, Karaman M, Özen H, Koç E, Necofoğlu, H:** Toxic effects of cobalt parahydroxybenzoate on tissue histopathology and in serum proteins in *Capoeta capoeta capoeta*. *Fresen Environ Bullet*, 17 (9A): 1322-1327, 2008.
- 13. Alazemi BM, Lewis JW, Andrews EB:** Gill damage in the freshwater fish *Gnathonemus petersii* (Family: Mormyridae) exposed to selected pollutants: An ultrastructural study. *Environ Tech*, 17, 225-238, 1996.
- 14. Garcia-Santos S, Monteiro SM, Carralo J, Fotainhas-Fernandes A:** Histological alterations in gills of nil tilapia *Oreochromis niloticus* caused by cadmium. *Arq Brasil Med Vet Zootec*, 59, 376-381, 2007.
- 15. Gill TS, Pant JC, Tewari H:** Branchial pathogenesis in a freshwater fish, *Puntius conconius* ham., chronically exposed to sublethal concentrations of cadmium. *Ecotoxicol Environ Saf*, 15, 153-161, 1988.
- 16. Thophon S, Kruatrachue M, Upatham ES, Pokethitiyook P, Sahaphong S, Jaritkhuan S:** Histopathological alterations of white seabass, *Lates calcarifer*, in acute and subchronic cadmium exposure. *Environ Pollut*, 121, 307-320, 2003.
- 17. Messaoudi I, Barhoumi S, Saïd K, Kerken A:** Study on the sensitivity to cadmium of marine fish *Salaria basilisca* (Pisces: Blennidae). *J Environ Sci*, 21, 1620-1624, 2009.
- 18. Firat O, Cogun HY, Aslanyavrusu S, Kargin F:** Antioxidant responses and metal accumulation in tissues of Nile tilapia *Oreochromis niloticus* under Zn, Cd and Zn + Cd exposures. *J Appl Toxicol*, 29, 295-301, 2009.
- 19. Talas ZS, Orun I, Ozdemir I, Erdogan K, Alkan A, Yilmaz I:** Antioxidative role of selenium against the toxic effect of heavy metals (Cd<sup>2+</sup>, Cr<sup>3+</sup>) on liver of rainbow trout (*Oncorhynchus mykiss* Walbaum 1792). *Fish Physiol Biochem*, 34 (3): 217-222, 2008.
- 20. Wu C, Wang L, Liu C, Gao F, Su M, Wu X, Hong F:** Mechanism of Cd<sup>2+</sup> on DNA cleavage and Ca<sup>2+</sup> on DNA repair in liver of silver crucian carp. *Fish Physiol Biochem*, 34 (1): 43-51, 2008.
- 21. Cattani O, Serra R, Isani G, Raggi G, Cortesi P, Carpena E:** Correlation between metallothionein and energy metabolism in sea bass, *Dicentrarchus labrax*, exposed to cadmium. *Comp Biochem Physiol*, 113, 193-199, 1996.
- 22. Bouraoui Z, Banni M, Ghedira J, Clerandeanu C, Guerbej H, Narbonne JF, Boussetta H:** Acute effects of cadmium on liver phase I and phase II enzymes and metallothionein accumulation on sea bream *Sparus aurata*. *Fish Physiol Biochem*, 34 (3): 201-207, 2008.
- 23. Firat O, Kargin F:** Individual and combined effects of heavy metals on serum biochemistry of Nile tilapia *Oreochromis niloticus*. *Arch Environ Contam Toxicol*, 58 (1): 151-157, 2010.
- 24. Richmonds CR, Dutta HM:** Variations produced by malathion on the serum protein fractions of bluegill sunfish *Lepomis macrochirus*. *Comp Biochem Physiol C-Toxicol Pharmacol*, 102 (3): 403-406, 1992.
- 25. Shakoori AR, Ilyas M, Aziz F:** Toxicity of sublethal doses of Trebon (Ethofenprox) on total blood serum proteins, acetylcholinesterase activity and SDS-PAGE pattern of blood serum proteins of *Cirrhinus mrigala*. *Pakistan J Zool*, 24 (3): 235-241, 1992.
- 26. Dutta HM, Lall SB, Haghghi AZ:** Methyl mercury induced changes in the serum proteins of bluegills-*Lepomis macrochirus* (Teleostei). *Ohio J Sci*, 83, 119-122, 1983.
- 27. Heikkila JJ, Schultz GA, Iatrou K, Gedamu L:** Expression of a set of fish genes following heat or metal ion exposure. *J Biol Chem*, 257, 12000-12005, 1982.