

## Pathological and Microbiological Investigations in Rainbow Trout (*Oncorhynchus mykiss* Walbaum, 1792) Naturally Infected with *Lactococcus garvieae*

Hamdi AVCI \*   
T. Tansel TANRIKUL \*\*

Ahmet AYDOĞAN \*  
S. Serap BİRİNCİOĞLU \*

\* University of Adnan Menderes, Faculty of Veterinary Medicine, Department of Pathology, TR-09016 Aydın - TURKEY

\*\* Ege University, Fisheries Faculty, Department of Fish Diseases, TR-35440 Urla, İzmir - TURKEY

**Makale Kodu (Article Code): KVFD-2010-2452**

### Summary

During the summer of 2006, an outbreak of lactococcosis took place in a rainbow trout farm in the southern Aegean region of Turkey. Clinically lethargic, erratic swimming, darkness in colour and exophthalmia were observed. Histopathological examination revealed epicarditis, peritonitis, enteritis and panophthalmitis. The gills had lamellar edema, hemorrhage and telangiectasia. Histopathological findings were also found in the liver, kidney, pyloric caeca and swim-bladder. In conclusion, the bacterium isolated from the rainbow trout farm was identified as *Lactococcus garvieae* by biochemically, and its pathological effects on the rainbow trout tissues were widely evaluated firstly in Turkey.

**Keywords:** *Lactococcus garvieae*, Pathological and microbiological findings, Rainbow trout (*Oncorhynchus mykiss* Walbaum, 1792)

## *Lactococcus garvieae* ile Doğal Enfekte Gökkuşluğu Alabalıklarında (*Oncorhynchus mykiss* Walbaum, 1792) Patolojik ve Mikrobiyolojik İncelemeler

### Özet

Çalışmada, 2006 yılı yaz mevsiminde Ege Bölgesi'nin güneyinde bulunan bir alabalık işletmesinde görülen laktokokkozis enfeksiyonu tanımlandı. Letarji, düzensiz yüzme, deride renk değişiklikleri ve ekzoftalmus gözlenen klinik bulgulardı. Histopatolojik incelemede, epikarditis, peritonitis, enteritis ve panoftalmitis görüldü. Solungaçlarda ödem, kanama ve telangiektazi belirgindi. Karaciğer, böbrek, pilorik kese ve hava kesesinde de histopatolojik bulgular mevcuttu. Mikrobiyolojik incelemeler sonucunda etkenin *Lactococcus garvieae* olduğu saptandı. Sunulan bu çalışma ile Türkiye'de ilk kez gökkuşluğu alabalıklarında *Lactococcus garvieae* enfeksiyonunun patolojik bulguları kapsamlı olarak değerlendirilmiştir.


**Anahtar sözcükler:** *Lactococcus garvieae*, Patolojik ve mikrobiyolojik bulgular, Gökkuşluğu alabalığı (*Oncorhynchus mykiss* Walbaum, 1792)


### INTRODUCTION

The Lactococcosis genus was formerly known as the lactic group of streptococci and consisted of *Streptococcus lactis*, *Streptococcus cremoris* and *Streptococcus diacetylactis*. After the genus was established *Lactococcus garvieae* (*L. garvieae*) was also to this genus added <sup>1</sup>. *L.*

*garvieae*, previously described as *Streptococcus garvieae*, was originally isolated from cow with mastitis in the United Kingdom <sup>2</sup>. Since that time, Gram-positive bacterium, *L. garvieae* (junior synonym of *Enterococcus serilicida*) has been isolated from various species of fish in

 **İletişim (Correspondence)**

 +90 256 2470700/234

 havci@adu.edu.tr

different parts of the world including Japan <sup>3</sup>, Australia <sup>4</sup>, South Africa <sup>5</sup> and Europe <sup>6</sup>. The first microbiological description of *L. garvieae* in Turkey was in 1995 <sup>7</sup>. Since then, the bacterium has caused serious losses of rainbow trout in hatcheries of Turkey <sup>8-10</sup>.

Bacteriologic and pathologic studies confirmed that *L. garvieae* was the etiological agent of a hemorrhagic septicemia in farmed trout, and the disease characterized with exophthalmos, darkness of the skin and haemorrhages in the internal organs <sup>10-15</sup>. The main histopathological findings in infected fish are epicarditis, peritonitis, enteritis, meningitis and panophthalmitis <sup>12,16,17</sup>.

The purpose of this study is to elucidate the pathological and microbiological results of the lactococcosis of naturally infected with *L. garvieae* in rainbow trout.

## MATERIAL and METHODS

During the summer of 2006, an outbreak that occurred in a fish farm in the southern Aegean region of Turkey. When the outbreak was determined in the fish farm, the mortality rates in affected fish ranged from 50% to 60%.

**Table 1.** The API 20 Strep profile for *L. garvieae* isolated from rainbow trout farm

**Tablo 1.** Alabalk işletmesinden izole edilen *L. garvieae*'nin API 20 Strep testine göre biyokimyasal özellikleri

Properties							
Catalase	-	$\alpha$ -Galactosidase	-	ADH	+	Trehalose	+
Oxidase	-	$\beta$ -Glukoronidase	-	Ribose	+	Inulin	-
VP	+	$\beta$ -Galactosidase	-	Arabinose	+	Raffinose	-
Hippurate	-	Alkaline phosphatase	-	Mannitol	+	Amygdalin	-
Esculin	+	Leucine arylamidase	+	Sorbitol	-	Glycogen	-
Pyrrolidonylarylamidase	+	Motility	-	Lactose	-	$\beta$ -Hemolysis	-

(+; Positive, -; Negative)

The total of 30 dead or euthanased rainbow trout (weight 120±10 g) collected from the rearing pools were necropsied. Tissue samples (heart, liver, kidney, gills, stomach, pyloric caeca, intestines, spleen, swim-bladder, eyes, brain, skin and skeletal muscles) taken from rainbow trout were fixed in 10% neutral-buffer formalin solution, embedded in paraffin, sectioned in 5  $\mu$ m and stained routinely with haematoxylin and eosin (H&E). The selected kidney, liver, spleen, heart, eye and gill sections were also stained by Brown and Brenn staining method for bacteria <sup>18</sup>.

Tissue samples from heart, liver, kidney and spleen were taken for isolation of bacteria, and streaked directly onto tryptic soy agar (TSA, Merck) supplemented with 5% sheep blood. Biochemical tests on samples were carried out in API 20 Strep systems (Biomérieux, France), and the incubation was 72 h at 25°C <sup>19</sup>.

## RESULTS

### Bacteriological Findings

After incubation for 48 h at 25°C, pure cultures of whitish colonies were observed. All isolates were non-motile, oxidase and catalase negative, and Gram-positive cocci short chain. Based on phenotypic characteristics, the bacterium was identified as *L. garvieae*. The results are presented in [Table 1](#).

### Pathological Findings

Lethargie, anorexia and darkness in colour on the skin were observed on the diseased fish. The infected fish were generally found to be swimming weakly and irregularly near the surface of the water.

**Macroscopical findings:** Redness of fins were determined, hemorrhages at the base of the pelvic and pectoral fins and around the anus were identified. Erosive- ulcerative changes in the skin were only seen in two fish. Uni- or bilateral exophthalmos occurred frequently accompanied by hemorrhages in the ocular



**Fig 1.** Petechial hemorrhages on the serosal surface of the pyloric caeca (arrows)

**Şekil 1.** Pilorik kese serozal yüzeyinde peteşiyel kanamalar (oklar)

cavity with the opacity of the cornea. The gill filaments were swollen, hemorrhagic and covered by mucus. The abdomen was distended, and a hemorrhagic serous fluid was found in the abdominal cavity. The petechial hemorrhages were also observed on the mesenterium and serosa of the some organs including stomach, pyloric caeca (Fig. 1) and swim-bladder. The liver was swollen and yellowish-white in colour. The spleen and kidney were generally enlarged and dark in colour. The pyloric caeca and intestines were swollen and they filled with reddish-mucus content.

**Microscopical findings:** The distribution of the microscopic findings were presented in Table 2. The most common microscopical findings were observed in the heart and peritoneum. The epicardial lesions consisted mainly of inflammatory cells and varying amounts of fibrin and cellular debris (Fig. 2A). Within the myocardium, infiltrations of lymphoid cell (Fig. 2B) and activation of the ventricular endothelial macrophages were also present. Cellular or fibrinocellular peritonitis was generally observed (Fig. 3A). Severe infiltrations of inflammatory cell and fibrin were generally detected in

**Table 2.** Assessment of the microscopic findings in fish tissues infected with *L. garvieae*

**Tablo 2.** *L. garvieae* ile enfekte balık dokularında mikroskopik bulguların dağılımı

Organs	Microscopic Findings	Number of Fish (n)			
		0	1	2	3
Heart	epicarditis	4	6	13	7
	infiltration of lymphoid cells in the myocard	15	8	5	2
Periton	peritonitis	12	4	7	7
	adhesion	18	6	3	3
	hemorrhage	10	4	10	6
	clump of bacteria	16	5	7	2
Gill	hemorrhage	8	11	5	6
	lamellar edema	5	10	7	8
	telangiectasia	10	7	9	4
	clump of bacteria	19	4	7	0
	increas numbers of EGCs	16	3	6	5
	hyperplasia of the interlamellar cell	16	7	5	2
	lamellar fusion	20	4	5	1
Eye	hemorrhage	6	7	8	9
	infiltration of inflammatory cell	10	8	7	5
	clump of bacteria	14	8	5	3
Liver	degeneration	12	8	10	0
	infiltration of lymphoid cell	17	2	7	4
	fatty droplets in the hepatocytes	13	6	8	3
Kidney	degeneration	13	7	5	5
	hyalin droplets in the epithel cells of the proximal tubuli	15	8	4	3
	increase in the melanomacrophage centres	14	3	5	8
Pyloric caeca	desquamation of mucosal epithelium	12	6	9	3
	increses of level of mucin	9	7	9	5
	increase number of the EGCs	12	3	10	5
Stomach	increase number of the EGCs	10	4	7	9
Intestine	hyperemia	5	5	8	12
	hemorrhage	6	3	7	14
	infiltration of inflammatory cell	16	7	5	2
Swim-bladder	hemorrhage	11	9	5	5
	infiltration of inflammatory cell	19	3	6	2
Spleen	clump of bacteria	20	4	6	0
Brain	meningitis	29	0	1	0
Skin	erosion - ulcer	28	1	1	0

(0; none, 1; mild, 2; moderate; 3; severe. n; number of fish)



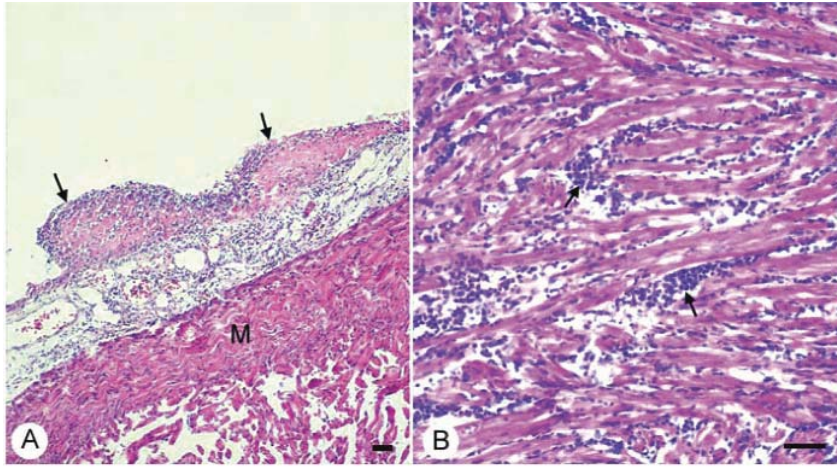
the serosa of the pyloric caeca and mesenterium.

In the eyes, there were hemorrhages and infiltrations of inflammatory cell in the sclera and to a lesser extent in the choroid and retina. Clumps of bacteria were found in the lumens of the blood vessels (Fig. 3B) and hemorrhagic areas, and macrophages also contained similar bacteria. The gills showed vascular changes including edema, hemorrhage and telangiectasia (Fig. 3C). Swelling of epithelial cells of the gills were common present, and some of epithelial cells were separated from the secondary lamellae. Small clumps of gram-positive bacteria were also determined in the blood vessels. Some fish had lamellar hyperplasia and fusion coincided with an increased of eosinophilic granular cells (EGCs) within primary lamellae.

Lesions of the liver included degeneration of the

hepatocytes and perivascular and periductular lymphoid cell infiltrations (Fig. 3D). The sinusoids were dilated, the hepatocytes were contained varying size lipid droplets. In the kidney, degeneration and hyaline droplets in epithelium of the proximal tubuli were generally found. In addition, an increases in melanomacrophage centres were also determined in some fish. In the spleen, the blood vessels were filled up erythrocytes, and some vessels were contained small clumps of gram-positive bacteria.

Histopathological findings were marked in the pyloric caeca to anterior intestines. Sections from the pyloric caeca showed that desquamation and necrosis of mucosal epithelium with increased level of the mucin in the lumen. Large numbers of the EGCs within submucosa of the pyloric caeca were also seen. Severe hyperemia and

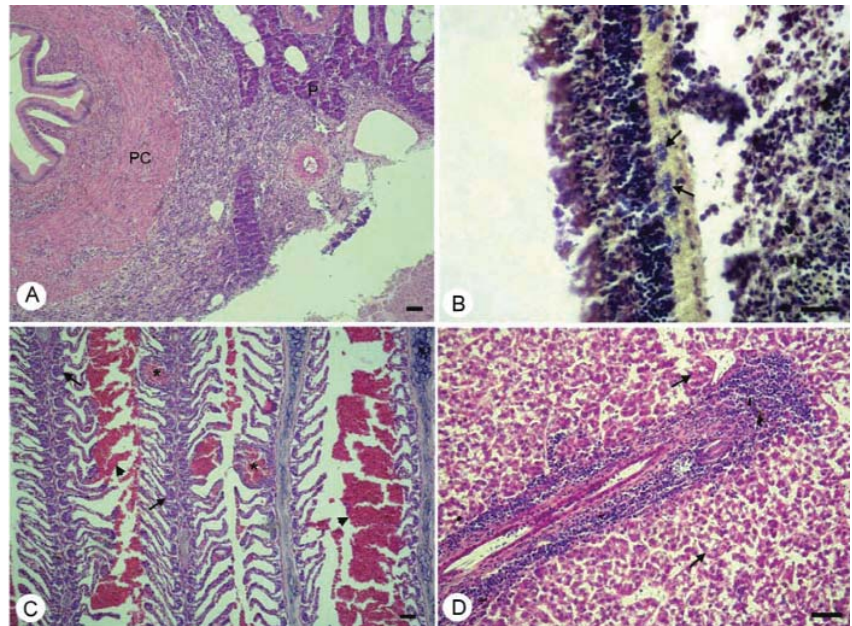


**Fig 2.** Heart. A. Epicarditis consisted of inflammatory cells and fibrin (arrows), (M: Myocard), HE., Bar= 50µm. B. Lymphoid cell infiltrations in the myocardium (arrows). HE., Bar= 50µm

**Şekil 2.** Kalp. A. Yangısal hücrelerden ve fibrinden oluşan epikarditis (oklar), (M: Miyokard), HE., Bar= 50µm. B. Miyokardiyumda lenfoid hücre infiltrasyonları (oklar). HE., Bar= 50µm

**Fig 3. A.** Peritonitis consisted of inflammatory cells. (PC: Pyloric caeca, P: Pancreas). HE., Bar= 50 µm. **B.** Gram-positive bacteria in the lumens of blood vessel of the eye (arrows), Brown-Brenn, Bar: 30 µm. **C.** Hemorrhages (arrow-heads), telangiectasia (\*) and hyperplasia (arrows) in the gills. HE., Bar=50 µm. **D.** Degeneration in the hepatocytes (arrows) and perivascular and periductular lymphoid cell infiltrations in the liver. HE., Bar=50 µm

**Şekil 3. A.** Yangısal hücrelerden oluşan peritonitis. (PC: Pilorik Kese, P: Pankreas). HE., Bar=50 µm. **B.** Gözde damar lümenlerinde Gram-pozitif bakteriler (oklar), Brown-Brenn, Bar=30 µm. **C.** Solungaçlarda kanama (okbaşları) telangiektazi (\*) ve hiperplazi (oklar) HE., Bar=50 µm. **D.** Karaciğerde hepatositlerde dejenerasyon (oklar) ve perivasküler ve perikanaliküler lenfoid hücre infiltrasyonları. HE., Bar=50 µm



hemorrhages in the villus of the intestines were often determined. Infiltration of inflammatory cells in the lamina propria were also observed in some fish. The findings observed in the stomach were similar but less severe.

The swim-bladder wall was usually edematous. In some cases, there was mild hemorrhages and inflammatory cell infiltrations in the serosa. Meningitis in one fish and erosive-ulcerative dermatitis in two fish were also present.

## DISCUSSION

Lactococcosis is one of the infectious diseases with significant economic and sanitary repercussions for trout farms in Mediterranean countries during the summer months<sup>6,20-22</sup>. The first description in Europa of *L. garvieae* as a fish pathogen was in 1993<sup>20</sup>. Microbiologically the bacterium was first isolated from a trout farm in 1995, in Turkey<sup>7</sup>. Since then, the bacterium has causes serious losses of rainbow trout in farms in Turkey as well as in most other European countries<sup>8-10,13,22</sup>. For this reason, *L. garvieae* has been considered as the new primary causative agent of rainbow trout in Turkey<sup>8-10</sup>.

It is reported that outbreaks of lactococcosis in particular are mostly related to poor environmental conditions and other stress factors<sup>15,23</sup>. The water temperature and quality are the most important factors influencing the onset of the disease outbreaks<sup>15,22,23</sup>. In the present study, the results obtained from the fish farm, strongly support the connection between environmental stress and outbreak of the lactococcosis. Because when the disease was occurred, the water temperature was over 18°C and the pools were also overcrowded.

Clinical signs and gross findings in *L. garvieae* infection in rainbow trout described here are similar to those reported in rainbow trout and other fish<sup>10,12-14,16</sup>. But, these lesions are similar to some fish diseases caused by different agents in rainbow trout<sup>24</sup>. Therefore, a presumptive diagnosis of the lactococcosis in rainbow trout can not be made on the basis of clinical signs and gross findings.

Lactococcosis is characterized by hemorrhagic septicemia in fish<sup>11,12,25</sup>. *L. garvieae*, agent of lactococcosis produces lesions in the vascular endothelium that causing blood extravasation, leading to hemorrhages and petechias at the surface internal organs. Over the external surface, it also intensely affects the most irrigated tissues such as perianal or buccal area and fins<sup>25</sup>. Diffuse hemorrhages related to haemorrhagic septicemia

in the external surfaces, eyes and on the serosal surfaces of the fish in the present study are similar to those described by other investigators<sup>11,12,16</sup>.

The lesions characterized by epicarditis, peritonitis and panophthalmitis in the present study are comparable those of lactococcosis in fish reported by the others<sup>12,17</sup>. Therefore, these lesions in the rainbow trout could be considered as the most characteristic histopathologic findings of the lactococcosis. Fibrinous meningitis associated with the lactococcosis have also been described in fish<sup>16,17</sup>, but in the present study, the meningitis was determined in only one fish. In addition, the histopathological findings of the intestine, kidney and spleen manifested in this study are different from those described by some authors<sup>12,16,17</sup>, especially with the lack of any extensive erosions with pseudomembrane-like formation of the intestines and any necrosis of the kidney and spleen<sup>16,17</sup>. Moreover, periductular and perivascular lymphoid cell infiltrations observed in the liver of some fish have not been described previously for lactococcosis.

The oral route is the main route of transmission of *L. garvieae* have been proposed<sup>26,27</sup>, but the results from this study suggest that the gills and eyes are a major site of attachment and the proliferation of *L. garvieae* during infection period. After the bacteria penetrate through the gills and eyes, the spread of blood vessels and finally causing septicemia.

In this study, the isolated bacteria was identified as *L. garvieae* using the API 20 (25°C, 72h) system. The biochemical properties of bacteria isolated from rainbow trout in this study are very similar to those described in other studies<sup>9,13,17,19,21</sup>.

It is widely accepted idea that *L. garvieae* is considered as one of the main pathogen of fish, but numerous cases of infections with *L. garvieae* in human were also reported<sup>28-30</sup>. However, in a recent report<sup>31</sup>, sporadic human case related to consumption of raw fish foods infected with *L. garvieae* was also described. The relationship between outbreaks of *L. garvieae* and human infections has not been proved until now, and our results cannot support that *L. garvieae* might be considered potentially a zoonotic bacterium to humans.

In the present study, the bacterium isolated from the rainbow trout was identified by biochemically, and its pathological affects on the rainbow trout were firstly evaluated in Turkey. It was also reported that *L. garvieae*, agent of lactococcosis, might cause outbreaks with high mortality in rainbow trout in Turkey especially in hot seasons.



## REFERENCES

1. Schleifer KH, Kraus J, Dvorak C, Kilpper-Balz R, Collins MD, Fischer W: Transfer of streptococcus lactis and related to genus *Lactococcus* gen. nov. *Syst Appl Microbiol*, 6, 183-195, 1985.
2. Collins MD, Farrow JA, Phillips BA, Kandler O: *Streptococcus garvieae* sp. nov. and *Streptococcus plantarum* sp. nov. *J Gen Microbiol*, 129, 3427-3431, 1983.
3. Kusuda R, Salati F: Major bacterial diseases affecting mariculture in Japan. *Annu Rev Fish Dis*, 3, 9-85, 1993.
4. Carson J, Munday B: Streptococcosis-an emerging disease in Aquaculture. *Australian Aquaculture*, 5, 32-33, 1990.
5. Bragg R, Broere JSE: Streptococcosis in rainbow trout in South Africa. *Bull Eur Assoc Fish Pathol*, 6, 89-91, 1986.
6. Eyngor M, Zlotkin A, Ghittino C, Prearo M, Douet DG, Chilmonczyk S, Eldar A: Clonality and diversity of the fish pathogen *Lactococcus garvieae* in Mediterranean countries. *Appl Environ Microbiol*, 70 (9): 5132-5137, 2004.
7. Çağırğan H, Tanrıkul T: A new problem for turkish rainbow trout (*Oncorhynchus mykiss*, W.) farms: *Enterococcus* like bacterium infection. *Bornova Vet Kont ve Araşt Enst Müd Derg*, 19 (33): 9-19, 1995.
8. Altun S, Diler O, Adiloğlu AK: Genotyping of *Lactococcus garvieae* strains from rainbow trout (*Oncorhynchus mykiss*) by 16 s rDNA sequencing. *Bull Eur Assoc Fish Pathol*, 24 (2): 119-125, 2004.
9. Çağırğan H: Biotyping of *Lactococcus garvieae* Isolated from Turkey. *Ege University Journal of Fisheries & Aquatic Sciences*, 21 (3-4): 267-269, 2004.
10. Özer S, Bulduklı PS, Dönmez E: Mersin ilinde yetiştiriciliği yapılan gökkuşuğu alabalıklarında (*Oncorhynchus mykiss*, Walbaum) streptokokkozis varlığı. *Journal of FisheriesSciences.com*, 2 (3): 272-283, 2008.
11. Eldar A, Ghittino C, Asanta L, Bvozzettz E, Gorla M: *Enterococcus seriolicida* is a junior synonym of *L. garvieae*, a causative agent of septicemia and meningoencephalitis in fish. *Curr Microbiol*, 32, 85-88, 1996.
12. Chang PH, Lin CW, Lee YC: *Lactococcus garvieae* infection of cultured rainbow trout, *Oncorhynchus mykiss*, in Taiwan and associated biophysical characteristics and histopathology. *Bull Eur Assoc Fish Pathol*, 22 (5): 319-326, 2002.
13. Diler O, Altun S, Adiloğlu AK, Kubilay A, Işıklı B: First occurrence of Streptococcosis affecting farmed rainbow trout (*Oncorhynchus mykiss*) in Turkey. *Bull Eur Assoc Fish Pathol*, 22, 21-5, 2002.
14. Kang S, Shin G, Shin Y, Palaksha KJ, Kim Y, Yang H, Lee E, Lee E, Huh N, Ju OM, Jung TS: Experimental evaluation of pathogenicity of *Lactococcus garvieae* in black rockfish (*Sebastes schlegelli*). *J Vet Sci*, 5 (4): 387-390, 2004.
15. Vendrell D, Balcazar JL, Ruiz-Zarzuela I, Blas ID, Girones O, Muzquiz JL: *Lactococcus garvieae* in fish: A review. *Comp Immunol Microbiol Infect Dis*, 29, 177-198, 2006.
16. Eldar A, Ghittino C: *Lactococcus garvieae* and *Streptococcus iniae* infection in rainbow trout (*Oncorhynchus mykiss*): Similar but different diseases. *Dis Aquat Org*, 36, 227-231, 1999.
17. Chen SC, Liaw LL, Ko SC, Wu CY, Chaung HC, Tsai YH, Yang KL, Chen YC, Chen TH, Lin GR, Cheng SY, Lin YD, Lee JL, Weng YC, Chu SY: *Lactococcus garvieae*, a cause of disease in grey mullet, *Mugil cephalus* L., in Taiwan. *J Fish Dis*, 25, 727-732, 2002.
18. Culling CFA, Allison RT, Barr WT: Cellular Pathology Technique. 4th ed., pp. 269-270, Butterworths, London, 1985.
19. Austin B, Austin DA: Bacterial Fish Pathogens Diseased of Farmed and Wild Fish. 3rd ed., p. 457, Praxis Publishing, Chichester, UK, 1999.
20. Palacios MA, Zamora MJ, Vazquez J, Zamora E, Duran A: Streptococcosis in rainbow trout (*Oncorhynchus mykiss*) in Spain. *Boll Soc It Patol Ittica*, 13, 11-16, 1993.
21. Eldar A, Gorla M, Ghittino C, Zlotkin A, Bercover H: Biodiversity of *Lactococcus garvieae* strains isolated from fish in Europa, Asia and Australia. *Appl Environ Microbiol*, 65, 1005-1008, 1999.
22. Soltani M, Nikbatht GH, Mousavi HAE, Ahmadzadeh N: Epizootic outbreak of lactococcosis caused by *Lactococcus garvieae* in farmed rainbow trout (*Oncorhynchus mykiss*) in Iran. *Bull Eur Assoc Fish Pathol*, 28 (5): 207-212, 2008.
23. Austin B: The effect of pollution on fish health. *J Appl Microbiol*, 85, 234-242, 1999.
24. Roberts RJ: Fish Pathology. 3rd ed, WB Saunders, Toronto, 2001.
25. Prieta J, Domenech A, Fernandez-Garayzabal JF, Collins MD, Rodriguez UM, Jones D, Rodriguez A, Dominguez L: Lactococcosis de la trucha arco iris. *Med Vet*, 10, 363-373, 1993.
26. Taniguchi M: Progress of streptococcosis of yellowtail in peroral inoculation. *Bulletin of the Japanese Society of Scientific Fisheries*, 49, 1171-1174, 1983.
27. Nakai, T, Sugimoto R, Park KH, Matsuoka S, Mori K, Nishioka T, Maruyama K: Protective effects of bacteriophage on experimental *Lactococcus garvieae* infection in yellowtail. *Dis Aquat Org*, 37, 33-41, 1999.
28. James PR, Hardman SMC, Patterson DLH: Osteomyelitis and possible endocarditis secondary to *Lactococcus garvieae*: A first case report. *Postgrad Med J*, 76, 301-303, 2000.
29. Mofredj A, Baraka D, Kloeti G, Dumont JL: *Lactococcus garvieae* septicemia with liver abscess in an immunosuppressed patient. *Am J Med*, 109, 513-514, 2000.
30. Yiu K, Siu C, To K, Jim M, Lee K, Lau C, Tse H: A rare cause of infective endocarditis; *Lactococcus garvieae*. *Int J Cardiol*, 114, 286-287, 2007.
31. Wang CYC, Shie HS, Chen SC, Huang JP, Hsieh IC, Wen MS, Lin FC, Wu D: *Lactococcus garvieae* infections in humans: Possible association with aquaculture outbreaks. *Int J Clin Pract*, 61 (1): 68-73, 2007.