

Genetic Parameters of 305-Day Milk Yield for Brown Swiss Reared in the Bahri Dağdaş International Agricultural Research Institute in Turkey

Muammer TILKI *  Mehmet ÇOLAK ** Mehmet SARI *

* Kafkas University, Veterinary Faculty, Department of Animal Science, Kars -Turkey

** Bahri Dağdaş International Agricultural Research Institute, Konya -Turkey

Makale Kodu (Article Code): 2008/145-A

Summary

This study was conducted to estimate variance components, genetic parameters and breeding values of 298 Brown Swiss cows milk yield recorded between 1987 to 1999. Estimates of variance components, genetic parameters and estimates of breeding values of 305-day milk yield were obtained for each of animals using two different models. First lactation records were analysed in a model (Model 1) that included direct genetic effect as the only random factor. All lactation records were analysed in a model (Model 2) that was the same as Model 1 but permanent environmental effects associated with animal were also taken into account. The heritability of milk yield for first lactation and all lactations were 0.23 and 0.19 respectively. According to analyses among the years, there was no any constant trend for phenotypic and genetic values of 305 day milk yield. Generally an irregular fluctuation was observed. This irregular fluctuation may demonstrate that there was no any standard selection programme in the herd.

Keywords: *Breeding value, Genetic trend, Milk yield, Brown Swiss*

Bahri Dağdaş Uluslararası Tarımsal Araştırma Enstitüsünde Yetiştirilen Esmer Irk Sığırların 305 Günlük Süt Veriminin Genetik Parametreleri

Özet

Bu çalışma, 1987 ile 1999 yılları arasında kayıt altına alınan 298 Esmer ırk sığırın süt veriminin varyans unsurları, genetik parametreleri ve damızlık değerlerini tahmin etmek için yapılmıştır. Sığırlara ait 305 günlük süt veriminin genetik parametreleri, varyans bileşenleri ve damızlık değeri 2 farklı model kullanılarak elde edilmiştir. Birinci laktasyon kayıtları model 1 ile analiz edilmiş, tesadüfi faktör olarak yalnızca direkt genetik etki dâhil edilmiştir. Tüm laktasyon kayıtları model 2 ile analiz edilmiştir, model 1'den farklı olarak hayvan ile ilgili kalıcı çevresel etkiler de analize dâhil edilmiştir. Birinci laktasyon ve tüm laktasyon süt veriminin kalıtım dereceleri sırasıyla 0.23 ve 0.19 olarak bulunmuştur. 305 günlük süt veriminin fenotipik ve genetik değerlerinde yıllara göre devamlılık gösteren bir eğilim yoktur. Genellikle düzensiz dalgalanmalar gözlenmiştir. Bu düzensiz dalgalanmalar, sürüde herhangi bir standart seleksiyon programı uygulanmadığının göstergesi olabilir.

Anahtar sözcükler: *Damızlık değeri, Genetik eğilim, Süt verimi, İsviçre Esmeri*

INTRODUCTION

Brown Swiss cows are one of the most desirable breeds in Turkey. Nearly 65% of Turkey's cattle population is consisted of European originated cattle (Holstein, Brown Swiss, Simmental, Jersey) and their crosses. Brown Swiss has a special place among them with milk and meat yield capacity. Therefore many breeders and state farms prefer Brown Swiss. But very limited records for milk production were kept for the cattle reared in state and private farms. It is a reality that, recoding is essential to apply the latest techniques in modern animal husbandry. Insufficient

recording practice in the industry restricts the application of new techniques, such as BLUP, on the animal population¹⁻⁴.

Variance components and genetic parameters are required to estimate breeding values and breeding values are needed to select animals. In order to obtain breeding values, with accurate prediction, good knowledge of the variance components for the tarits is necessary^{1,5,6}.

Correct estimates of genetic parameters are essential



İletişim (Correspondence)



90 474 2426807/1135



mtilki@hotmail.com

for prediction of breeding values using mixed models ⁷. In addition, animal breeders use breeding values to predict genetic progress ⁸. Especially after the applications of new techniques in last years, selection with breeding values which were estimated by Best Linear Unbiased Prediction (BLUP), made better input on genetic values of dairy cows ^{9,10}.

The aim of the study was to estimate variance components and breeding values of milk yield in Brown Swiss cows calved in Bahri Dağdaş International Agricultural Research Institute in Turkey between 1987 and 1999 years.

MATERIAL and METHODS

Data

Data on 298 records of Brown Swiss cows were collected from the Bahri Dağdaş International Agricultural Research Institute in Turkey. Calving year ranged from 1987 to 1999. The calving months were ranged into four seasons: Winter, Spring, Summer, and Autumn. Characteristics of the data set are given in *Table 1*.

Table 1. Characteristics of the data set used for genetic parameter estimates

Tablo 1. Genetik parametrelerin tahmini için kullanılan verilerin özellikleri

Description	Total
Records in data	807
Cows in data	298
Sires in data	35
Dams in data	246
Animals in pedigree	461
Years (1987-1999)	13
Seasons	4
Lactation classes	7

Statistical analyses

Preliminary analyses were conducted for 305-day milk yield to define the significant fixed effects ($P < 0.05$) using a General Linear Model (Minitab 12.1). The final model included the fixed effects of calving year, calving season and lactation number.

Genetic parameters, variance components and breeding values were estimated by MTDFREML using two different animal models ¹¹. For the first lactation records an animal model was used with animal as the only random effect (*Model 1*). For all lactations the

animal model included the permanent environmental effect due to the cows itself, fitted as additional random effect (*Model 2*). Genetic trend was examined with estimated breeding values according to birth years. Fixed effects in the models were as follows:

Model 1 (First lactation): $Y_{ijklm} = F_{ijk} + a_i + e_{ijklm}$

Model 2 (All lactations): $Y_{ijklm} = F_{ijk} + a_i + p_i + e_{ijklm}$

Y_{ijklm} : is the observation of cow milk yield

a_i : the direct additive genetic effect of i th animal

p_i : permanent environmental effect i th animal (Model 2 only)

e_{ijklm} : the random residual error pertaining to Y_{ijklm}

F_{ijk} (fixed effects); $bm_i + by_j + ln_k$

Where;

bm_i : the effects of birth season (1-4)

by_j : the effects of birth year (1987-1999)

ln_k : the effects of lactation number (1-7)

RESULTS

The estimates of variance components and genetic parameters for milk yield were shown in *Table 2*. Similar additive genetic variation was observed for first lactation records and all lactation records. The heritability of milk yield for first lactation and all lactations were 0.23 and 0.19 respectively.

Table 2. Estimates of variance components and genetic parameters for milk yield

Tablo 2. Süt veriminin varyans unsurları ve genetik parametrelerinin tahmini

Parameter	First lactation	All lactations
σ^2_A	59.475	32.000
σ^2_C	-	0.866
σ^2_E	197.925	136.666
σ^2_P	257.400	159.533
h^2	0.23	0.19
(s.e)	(0.003)	(0.001)
C^2	-	0.006

σ^2_A = direct additive genetic variance; σ^2_C = maternal environmental variance; σ^2_E = error variance; σ^2_P = phenotypic variance; h^2 = direct heritability; C^2 = the permanent environmental variance due to the dam as a proportion of the phenotypic variance σ^2_C/σ^2_P ; s.e = Standard error

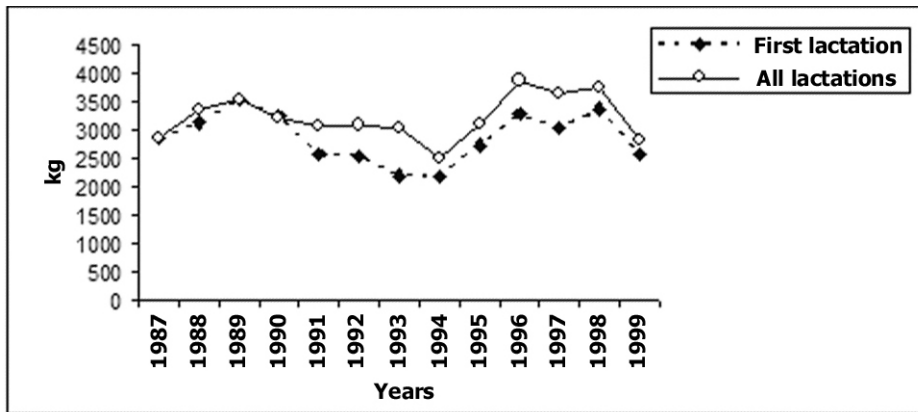


Fig 1. 305 day milk yields according to years

Şekil 1. Yıllara göre 305 günlük süt verimleri

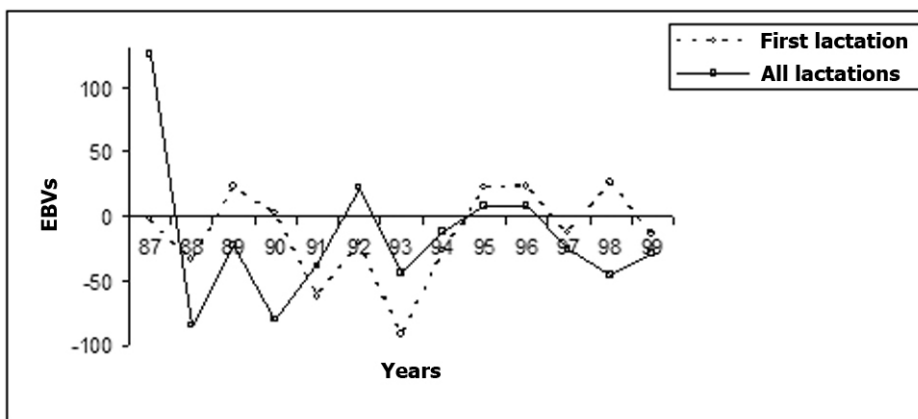


Fig 2. Breeding values for first and all lactations (the year values are represented as 1987-1999)

Şekil 2. İlk ve tüm laktasyonlar için damızlık değerleri (yıl değerleri 1987-1999 olarak ifade edilmiştir)

305 day milk yields according to years were shown in *Figure 1*. According to phenotypic values of 305 day milk yield, a fluctation trend was observed during the period. This trend might be accepted as a reflection of the management system and the characteristics of the herd.

Figure 2 shows the mean cow breeding values according to birth year. Genetic trend has not shown a trend among the years, generally a fluctuation was dedected.

DISCUSSION

First lactation records had a slightly higher heritability than all lactations records with h^2 of 0.23 and 0.19 respectively. These results were similar to those reported by Bakır et al.¹², and lower than those reported by Renno et al.¹³.

According to phenotypic values of 305 day milk yield, a fluctation trend was observed during the period. This trend might be accepted as a reflection of the management system and the characteristics of the herd. Similar non-constant trends for milk production were also reported by many authors¹⁴⁻¹⁶.

For all lactation records minimum milk yield was observed in 1994 and the maximum was in 1996 years. Little differences of milk yield in the observed years may also show that any selection was not applied on the animals to increase the milk yield. Because, amounts for milk yield in this study was less than the average milk yields of Brown Swiss cows^{13,17-19}. Therefore it can be said that milk yield of the studied Brown Swiss herd can be improved with management applications.

Genetic trend has not shown a tendency among the years, generally a fluctuation was dedected. Same instability was reported in the estimates breeding values (EBVs) of milk yield for different cattle breeds by Saatçı et al.³, Ulutaş et al.⁴ and Lidauer et al.²⁰. This situation in the mean EBVs may be observed in several herd and it can be a reflection of applying management system which was not contain the systematic selection.

Annual average EBVs of first calving records were less variable than those obtained for all lactations. But estimated breeding values for both calculations (first and all lactations) suggested that there was no any trend among the years, some years having low and some high values. This might be explained by the

fact that a defined selection programme based on BLUP was not carried out for the herd. It also indicates that management system was not steady for the herd during the trail period.

Parameters estimated from corresponding study gave an opportunity to compare the phenotypic and genetic parts of the studied herd.

It was defined from the trend analyses that there was no any standard selection programme in the evaluated Brown Swiss herd. This decision was agreed with the irregular trends among the examined years. Additionally study showed that recording systems are important for the livestock breeding, as reliable decisions can not be made without the records of animals. Therefore livestock breeders can be supported to keep the records of their animals and only with this situation they can apply the latest techniques, such as BLUP and selection based on EBV, on animals.

REFERENCES

1. **Misztal I, Lawlor TJ, Short TH, VanRaden PM:** Multiple-trait estimation of variance components of yield and type traits using an animal model. *J Dairy Sci*, 75, 544-551, 1992.
2. **Alpan O, Arpacık R:** Sığır Yetiştiriciliği. Şahin Matbaası, Ankara, Türkiye, 1998.
3. **Saatcı M, Ulutaş Z, Ap Dewi I, Akkuş I:** Environmental effects, variance components and estimated breedin values of milk yield for Holsteins Cows in Dalaman State Farm. *Atatürk Univ Ziraat Fak Derg*, 11, 97-101, 2000.
4. **Ulutaş Z, Akman N, Akbulut Ö:** Estimates of genetic and environmental (co)variances for 305-day milk yield and calving intervals in Holstein Fresian cattle. *Turk J Vet Anim Sci*, 28, 101-105, 2004.
5. **Tosh JJ, Kemp RA:** Estimation on variance components for lamb weight in three sheep populations. *J Anim Sci*, 72, 1184-1190, 1994.
6. **Haas de Y, Janss LLG, Kadarmideen HN:** Genetic and phenotypic parameters for conformation and yield traits in three Swiss dairy cattle breeds. *J Anim Breed Genet*, 124, 12-19, 2007.
7. **Chauhan VPS, Hayes JF:** Genetic parameters traits for Holsteins for first lactation milk production and composition using multivariate restricted maximum likelihood. *J Dairy Sci*, 74, 603-610, 1991.
8. **Santus EC, Everett RW, Quaas RL, Galton DM:** Genetic parameters of Italian Brown Swiss for levels of herd yield. *J Dairy Sci*, 76, 3596-3600, 1993.
9. **Beynhesk LL, Bertrand JK:** National genetic improvement programmes in the United States beef industry. *S Afr J Anim Sci*, 20, 103-109, 1990.
10. **Bryan JGE, Wray NR, Crump R, Thompson R, Bond DG:** Development and application of multi trait BLUP analysis to the UK Beef industry. *British Cattle Breeders Club Digest*, 47, 32-40, 1992.
11. **Boldman KG, Kriese LA, Van Vleck LD, Van Tassel CP, Kachman SD:** A manual for use of MTDFREML: A set of programs to obtain estimates of variance and covariance (Draft). U.S. Department of Agriculture, Agriculture Research Service, 1995.
12. **Bakır G, Kaygısız A, Ülker H:** Estimates of genetic parameters of milk yield in Brown Swiss and Holstein Friesian cattle. *Pakistan J Biol Sci*, 7, 1198-1201, 2004.
13. **Renno FP, Pereira JC, Araujo CV de, Torres R de A, Rodrigues MT, Renno LN, Oliveira RFM de, Kaiser F da R:** Productive aspects of the Brown Swiss breed in Brazil: Adjustment factors, milk and fat yields, and genetic parameters. *R Bras Zootec*, 31, 2043-2054, 2002.
14. **Powell RL, Wiggans GR:** Animal model evaluations for Mexican Holsteins. *J Dairy Sci*, 74, 1420-1427, 1990.
15. **Khan MS, Shook GE:** Effects of age on milk yield: Time trends and method of adjustment. *J Dairy Sci*, 79, 1057-1064, 1996.
16. **Ulutaş Z:** Estimation of genetic and phenotypic trends of 305-day milk yield for Holsteins reared at Gelemen state farm in Turkey. *Indian J Anim Sci*, 72, 875-877, 2002.
17. **Şeker İ, Tasalı H, Bayraktar M, Saatcı M, Tilki M:** Türkiye'de Muş Alpaslan Tarım İşletmesi'nde yetiştirilen Esmer ırkı ineklerin süt verim özellikleri üzerine bazı çevre faktörlerinin etkileri. *Kafkas Univ Vet Fak Derg*, 15, 297-300, 2009.
18. **Çakıllı F, Güneş H:** Esmer sığırların süt verimi özellikleri üzerinde araştırmalar. *İstanbul Üniv Vet Fak Derg*, 33, 43-58, 2007.
19. **İnci S, Kaygısız A, Efe E, Baş S:** Altınova Tarım İşletmesinde yetiştirilen Esmer sığırların süt ve döl verim özellikleri. *Ankara Üniv Zir Fak Tarım Bil Derg*, 12, 1-9, 2006.
20. **Lidauer M, Mantysaari EA, Strandén I:** Comparison of test-day models for genetic evaluation of production traits in dairy cattle. *Livest Prod Sci*, 79, 73-86, 2003.