

RESEARCH ARTICLE

Effects of Probiotics (*Bacillus subtilis*), Prebiotics (MOS + β -Glucans) and Their Combination on Growth Performance, Duodenal Histomorphology and Meat Quality in Broiler Chickens

Tuğçe Merve BERBEROĞLU¹ , Roshan RIAZ¹ , Arzu GEZER² , Benian YILMAZ¹ ,
Ebru KARADAĞ SARI³ , Özlem KARADAĞOĞLU¹ , Tarkan ŞAHİN¹ 

¹ Kafkas University, Faculty of Veterinary Medicine, Department of Animal Nutrition and Nutritional Diseases, TR-36100 Kars - TÜRKİYE

² Atatürk University, Vocational School of Health Services, TR-25000 Erzurum - TÜRKİYE

³ Kafkas University, Faculty of Veterinary Medicine, Department of Histology and Embryology, TR-36100 Kars - TÜRKİYE

**(*) Corresponding author:**

Özlem Karadağolu

Phone: +90 474 225 1150-5115

E-mail: drozlemkaya@hotmail.com

How to cite this article?

Berberoğlu TM, Riaz R, Gezer A, Yılmaz B, Karadağ Sarı E, Karadağolu Ö, Şahin T: Effects of probiotics (*Bacillus subtilis*), prebiotics (MOS + β -glucans) and their combination on growth performance, duodenal histomorphology and meat quality in broiler chickens. *Kafkas Univ Vet Fak Derg*, 31 (6): 731-739, 2025.
DOI: 10.9775/kvfd.2025.34619

Article ID: KVFD-2025-34619

Received: 17.06.2025

Accepted: 20.11.2025

Published Online: 02.12.2025

Abstract

The aim of this study was to evaluate the effects of dietary supplementation with probiotics, prebiotics, and synbiotics on growth performance, carcass traits, meat quality, and histomorphological characteristics in broiler chickens. A total of 320 one day old broiler chicks were allocated to four dietary treatment groups, each comprising 8 replicates of 10 chicks in completely randomized design. The groups included: a control group (no supplement), a prebiotic group (1 g/kg β -glucan + mannan-oligosaccharide; BM), a probiotic group (1 g/kg *Bacillus subtilis*; BS), and a synbiotic group (0.5 g/kg β -glucan + mannan-oligosaccharide + 0.5 g/kg *Bacillus subtilis*; BM + BS). The results revealed that body weight (BW), body weight gain (BWG), and average daily feed intake (ADFI) significantly increased in the BM + BS group, while feed conversion ratio (FCR) improved compared to the control group ($P < 0.001$). Furthermore, slaughter weight, hot and cold carcass weights, as well as heart and gizzard weights, were significantly higher in the BM + BS and BS groups ($P < 0.05$). Histomorphological analysis showed that villus height to crypt depth ratio (V/C) was significantly greater in the BM + BS and BS groups, but lower in the BM group ($P < 0.001$). Regarding meat quality, the BM + BS and BS groups showed increased brightness (L^*), redness (a^*), and yellowness (b^*) values ($P < 0.05$). In conclusion, the dietary synbiotics supplementation in broiler diets was shown to enhance growth performance, improve intestinal morphology.

Keywords: Growth performance, broilers, prebiotics, probiotics, synbiotics

INTRODUCTION

The extensive use of antibiotics in animal husbandry has contributed to resistant strains of bacteria and antibiotic residues in meat, causing serious health risks for human beings and the environment [1]. This has prompted a move from antibiotic growth promoters to developing alternative measures. It has been made possible for modern poultry farmers to rear chickens to the slaughter weight in a short time because of advancements made in chicken genetics and feeding techniques [2]. Nevertheless, the rapid growth rates of these broiler strains are accompanied by greater vulnerability to stressors, which can impair growth efficiency and ultimately compromise production outcomes [3]. Moreover, stress leads to pronounced biochemical and physiological alterations in the animals, resulting in antioxidant depletion, hence the degradation of meat quality [4].

As a result, meeting higher consumer expectations and improving meat quality has created a need for new approaches to animal nutrition [5]. In this regard, researchers aiming at replacing antibiotics with natural additives like probiotics, prebiotics, and synbiotics have gotten traction [6-9]. Probiotics, in particular, have attracted substantial scientific interest since the pioneering studies on replacing antibiotics with live microorganisms in poultry [10]. They are defined as a selective mixture of microorganisms primarily *Lactobacilli*, *Streptococci*, and *Bacillus* species that support intestinal health by modulating the gut flora through antagonism against pathogenic bacteria [11-13].

Prebiotics are substrates selectively metabolized by gut microorganisms to confer health benefits to the host [14]. Probiotics and prebiotics improve intestinal health, control



foodborne pathogens, and strengthen the immune system [15,16]. These practices modify the composition of the gut microbiota by augmenting the populations of useful bacteria (*Bifidobacteria* and *Lactobacilli*) and decreasing harmful bacteria (*E. coli* and *Campylobacter*) [17]. Moreover, the results suggest improvement in gut structure, serum immunological responses, and production of short chain fatty acids [18].

The combined use of probiotics and prebiotics is referred to as a synbiotic approach [19]. Prebiotics bind to the fimbriae of the harmful bacteria, facilitating their removal via the fecal bolus while simultaneously promoting the growth and metabolism of beneficial microorganisms. Additionally, probiotics enhance enterocyte nutrition, stimulating the digestive system and promoting intestinal balance and health in birds [20].

The study aimed to determine the effects of dietary supplementation with probiotics, prebiotics, and synbiotics on growth performance, intestinal health, and meat quality in broilers. Although several studies have been conducted to evaluate the effects of probiotics, and prebiotics on broiler performance, gut health and serum biochemical parameters. However, results have been inconsistent and information on the the the synbiotic effects of *Bacillus subtilis* with β -glucan and mannan-oligosaccharide on both intestinal histomorphology and meat quality is limited. Therefore, this study hypothesized that probiotic and prebiotic individually and synbiotic supplementation would synergistically improve growth performance, duodenal histomorphology, and meat quality characteristics in broiler chickens.

MATERIAL AND METHODS

Ethics Statement

All methods employed in this study were conducted following the guidelines approved by the Kafkas University Ethics Committee (KAÜ-HADYK/2024-128).

Experimental Birds, Husbandry, and Diets

The experiment was carried out at the Broiler Unit, Faculty of Veterinary Medicine, Kafkas University. Two sources of supplementation included beta-glucan + mannan-oligosaccharide (Vimar Company, Türkiye) and *Bacillus subtilis* (Kartal Kimya, Türkiye). A total of 320 one day-old mixed-sex Ross 308 broiler chicks were obtained from a local commercial producer, weighed, and assigned to four different dietary treatment groups in a completely randomized design, with eight replicates of 10 chicks each (initial weight: 44.66 ± 0.08 g). The chicks were housed in floor pens with dimensions of 130 cm in width, 108 cm in length, and 54 cm in height. The temperature control started with a reduction from an initial temperature of

35°C on day one, decreasing gradually at a rate of 0.5°C per day until a temperature of 26°C, from which point it remained steady at that temperature until day 42. During the experiment, the average relative humidity ranged from 60% to 75%, and a lighting regimen of 23 hours of light and 1 hour of darkness was applied until day 42. The broilers were fed according to a two-phase feeding program, consisting of a starter diet (0-21 days) and a finisher diet (21-42 days). The control group received no dietary supplementation, whereas the experimental groups were fed as follows: basal diet + 1 g/kg prebiotic (β -glucan + mannan-oligosaccharide [BM]); basal diet + 1 g/kg probiotic (*Bacillus subtilis* [BS]); basal diet + 0.5 g/kg prebiotic + 0.5 g/kg probiotic (BM + BS) synbiotic group. Prebiotic (β -glucans and mannanoligosaccharides) and probiotic BS supplements were sourced from a commercial supplier. The base diets for each phase were formulated according to the nutritional requirements of Ross 308 broiler chickens, as defined by the NRC (*Table 1*) [21]. Prebiotic and probiotic premixes were manually incorporated into the mash feed. All experimental groups were provided with powdered feed, and drinking water was available *ad libitum* throughout the study.

Growth Performance and Organ Index

Birds were individually weighed using a digital weighing scale on days 1, 21, and 42. Body weight gain (BWG) was calculated using a differential method. Feed intake (FI) was determined on intervals by measuring the difference between unconsumed and offered feed. Feed conversion ratio (FCR) was calculated by dividing FI by BWG. Adjustments were made to the BWG, FI, and FCR calculations to account for mortality and to ensure accurate data representation [22]. On day 42 of the study, one broiler chicken per cage was randomly selected from each of the four experimental groups (eight birds per group) and sacrificed by cervical dislocation. Defeathering was performed with the hard scaling process as described by Shung et al. [23]. Slaughter weight and hot carcass weight were recorded (g). The weight of internal organs (heart, liver, gizzard and spleen) was recorded. Cold carcass weight was measured after being stored at 4°C for 24 h. Hot and cold carcass yields were determined based on recorded carcass weights.

Intestinal Relative Index and Histomorphological Analysis

On day 42 of the study, mid-segment duodenal samples (approximately 2 cm in length) were collected from eight birds per treatment group (the same birds used for carcass evaluation, one per cage) and preserved in 10% buffered formalin for fixation. Following fixation, the samples were washed, dehydrated, cleared, and paraffin embedded. Sections of 5 μ m thickness were cut out of the

Table 1. Ingredients and nutrient composition of the basal diet for broilers chicken (g/kg of diet on an as-fed basis, at 90% DM)		
Ingredients (%)	Starter	Finisher
Corn, yellow	30.00	46.10
Barley	10.00	7.20
Wheat	5.70	8.00
Bran	2.80	2.50
Wheat middlings	3.50	2.40
Wheat offal	10.00	2.00
Vegetable oil	3.10	3.80
Rice bran	2.00	2.00
Sunflower meal, 45% CP	4.55	5.50
Corn gluten meal, 62% CP	11.00	10.25
Soybean meal, 48% CP	13.00	6.50
Dicalcium phosphate	1.80	1.40
DL-methionine	0.25	0.20
L-Lysine	0.50	0.50
Threonine	0.25	0.20
Marble dust	1.15	1.00
Salt	0.20	0.25
Vitamin-mineral premix ¹	0.20	0.20
Nutrients levels ² (%)		
Metabolizable energy, kcal/kg	3001	3201
Dry matter	89.90	90.00
Crude protein	22.50	19.50
Phosphorus	0.48	0.38
Calcium	0.95	0.78
Methionine +Cystine	1.04	0.92
Lysine	1.16	0.99
Ether extract	5.44	6.20
Crude fiber	4.26	3.73
Ash	6.02	5.11

¹ Supplied per kilogram of diet: 1.537.200 mg vit. A, 6.28 mg vit. E, 0.64 mg vit. K3, 37.36 mg Mn, 25 mg Zn 89, mg Fe, 0.03 mg Co, 8.76 mg Cu, 0.05 mg Mg, 0.91 mg Se

² Calculated compositions.

paraffin blocks and stained with Hematoxylin and Eosin for histomorphometric analysis of villi length and crypt depth (Fig. 1). Measurements were manually conducted on an area of 30.000 µm (the size of 20 fields of view) using the Cameram SLR 6.1 software for digital analysis (Mikro Sistem Ltd., Türkiye), and the corresponding arithmetic means were computed. The villus height to crypt ratio (V/C) was calculated [20].

Meat pH Value

At 15 min and 24 h after slaughter, pH values of the breast muscles were measured at a depth of 2.5 cm

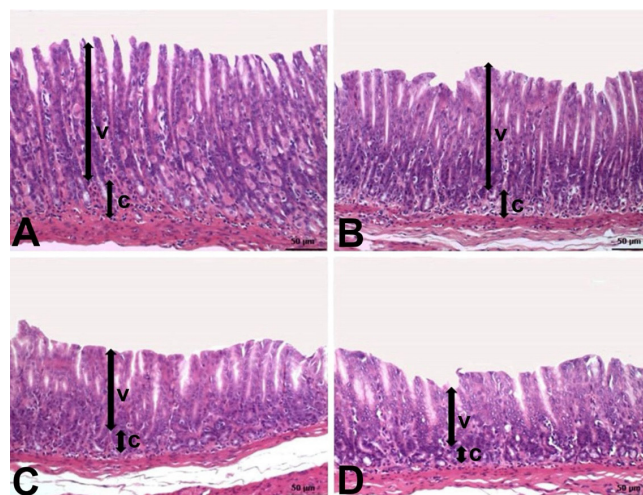


Fig 1. Broiler duodenum, Control: basal diet; BM: 1 g/kg prebiotic powder (β-glucan + mannanoligosaccharide), BS:1 g/kg probiotic powder (Bacillus subtilis), BM+BS: 0.5 g/kg probiotic (Bacillus subtilis) + 0.5 g/kg prebiotic (β-glucan + mannanoligosaccharide), V = villus height, C = Crypt depth. H&E staining

below the surface from three different points a combined glass penetrating electrode (Hanna instruments, Inc. Woonsocket, USA) [24].

Meat Color

Color measurements were taken on the carcass surface of the breast muscles, as well as the freshly exposed cut surface of the muscle. The L* (lightness), a* (redness), and b* (yellowness) values were determined using a chromameter (Hangzhou CHNSpec Technology Co., Ltd., China) [24].

Data Analysis

All the experimental data were processed using SPSS (PASW Statistics 22) software. One way ANOVA followed by Tukey's multiple comparisons were used to assess the effects of dietary treatments on the measured values. Differences were considered significant at $P < 0.05$.

RESULTS

Growth Performance

Dietary supplementation with prebiotics, probiotics, and synbiotics significantly ($P < 0.005$) improved body weight and body weight gain compared to the control group (Table 2). The most notable improvement was observed in the BM + BS group, followed by the BS and BM group. Birds receiving the BM + BS had higher average daily feed intake (ADFI), while the control, BM, and BS groups exhibited similar ADFI values (21-42 d and 0-42 d). The BM + BS group observed the best FCR during days 0-21, 21-42, and across the entire study period (0-42 days) ($P < 0.001$). Additionally, the BS group showed improved FCR compared to the control group, whereas the BM was similar to the control group but exhibited a tendency toward improvement.

Carcass parameters

As shown in Table 3, dietary inclusion of BS and BM + BS resulted in a significant improvement in slaughter, hot carcass, and cold carcass weights relative to the control group ($P<0.001$). Improvements were observed in the BM+BS group than in the BS group ($P<0.001$). Both BS and BM + BS feeding also resulted in significant increases in heart weight and gizzard weight. No significant

variations were seen in liver weight, spleen weight, or in the percentages of hot and cold carcass yield among groups ($P>0.05$).

Intestinal Histomorphology

As presented in Fig. 2, the V/C ratio was significantly increased by BS and BM + BS supplementation, whereas BM addition resulted in a significant decrease ($P<0.001$). Interestingly, despite the increase in the V/C ratio, the

Table 2. The effect of dietary supplementation with prebiotics, probiotics, and synbiotics on the performance parameters of broilers

Item	Dietary Treatments1				P-value
	Control	BM	BS	BM+BS	
d 1-21					
BW (g/bird)	350.89±2.41 ^c	365.62±2.86 ^b	373.68±2.29 ^{ab}	385.62±4.62 ^a	0.001
BWG (g/bird/ d)	28.12±0.22 ^b	28.96±0.43 ^{ab}	29.7±0.24 ^{ab}	30.61±0.75 ^a	0.005
ADFI (g/bird/ d)	38.94±0.31	39.41±0.58	39.65±0.19	40.04±1.05	0.659
FCR	1.36±0.01 ^c	1.34±0.01 ^{bc}	1.32±0.01 ^{ab}	1.3±0.01 ^a	0.001
d 22-42					
BW (g/bird)	1714.5±5.95 ^d	1809.92±12.23 ^c	1863.9±15.93 ^b	1990.58±13.07 ^a	0.001
BWG (g/ d)	81.35±0.33 ^c	84.87±1.01 ^{bc}	87.32±1.50 ^b	93.38±1.33 ^s	0.001
ADFI (g/bird/ d)	125.5±1.03 ^b	127.62±1.3 ^b	129.61±2.35 ^{ab}	136.38±0.68 ^a	0.001
FCR	1.53±0.01 ^b	1.5±0.01 ^{ab}	1.48±0.02 ^{ab}	1.46±0.02 ^a	0.032
d 1-42					
BW (g/bird)	1032.69±2.48 ^d	1087.77±5.78 ^c	1118.79±7.41 ^b	1188.10±7.59 ^a	0.001
BWG (g/ d)	54.73±0.12 ^c	56.92±0.33 ^b	58.51±0.70 ^b	61.99±0.45 ^a	0.001
ADFI (g/bird/ d)	82.22±0.48 ^b	83.52±0.56 ^b	84.63±1.17 ^b	88.21±0.46 ^a	0.001
FCR	1.45±0.01 ^c	1.42±0.01 ^{bc}	1.40±0.01 ^{ab}	1.38±0.01 ^a	0.001
BWG: body weight gain; BW: body weight; FI: feed intake; FCR: feed conversion ratio a,b,c,d Each superscript indicates the difference between the means within the row (P<0.05) 1 Control: basal diet without supplementation; BM: Basal diet supplemented with 1 g/kg prebiotic powder (β-glucan + mannanoligosaccharide), BS: Basal diet supplemented with 1 g/kg probiotic powder (Bacillus subtilis), BM+BS: Basal diet supplemented with 0.5 g/kg probiotic (Bacillus subtilis) + 0.5 g/kg prebiotic (β-glucan + mannanoligosaccharide)					

Table 3. The effect of dietary supplementation with prebiotics, probiotics, and synbiotics on some carcass parameters in broilers

Item (g)	Treatments ¹				P-value
	Control	BM	BS	BM+BS	
Slaughter weight	2380.99±41.76 ^c	2443.11±27.99 ^{bc}	2521.61±19.04 ^b	2636.92±21.06 ^a	0.001
Hot carcass weight	1758.00±31.40 ^c	1802.67±22.57 ^{bc}	1863.33±14.41 ^b	1950.17±16.03 ^a	0.001
Cold carcass weight	1743.00±31.40 ^c	1787.67±22.57 ^{bc}	1848.33±14.41 ^b	1935.17±16.03 ^a	0.001
Hot carcass yield %	73.83±0.14	73.77±0.16	73.89±0.02	73.95±0.02	0.679
Cold carcass yield %	73.20±0.14	73.16±0.17	73.30±0.02	73.38±0.02	0.474
Liver	58.19±1.06	54.48±2.69	56.29±1.31	52.56±1.43	0.137
Gizzard	24.62±0.54 ^b	24.75±1.29 ^b	26.33±0.64 ^{ab}	29.10±1.02 ^a	0.030
Heart	12.99±0.37 ^b	14.65±0.30 ^{ab}	15.48±0.49 ^a	15.02±0.69 ^a	0.004
Spleen	4.05±0.35	3.69±0.14	3.46±0.10	4.10±0.18	0.110

^{a,b} Each superscript indicates the difference between the means within the row ($P<0.05$)
¹ Control: basal diet without supplementation; BM: Basal diet supplemented with 1 g/kg prebiotic powder (β -glucan + mannanoligosaccharide), BS: Basal diet supplemented with 1 g/kg probiotic powder (*Bacillus subtilis*), BS+BM: Basal diet supplemented with 0.5 g/kg probiotic (β -glucan + mannanoligosaccharide) + 0.5 g/kg probiotic (*Bacillus subtilis*)

supplementation of BM, BS and BM+BS in the diet significantly ($P<0.001$) reduced both villus height and crypt depth in broilers (Fig. 2).

Meat Quality

The impacts of prebiotic, probiotic and synbiotic supplementation on muscle pH and meat color values are presented in Table 4. All meat quality traits, including breast color, differed significantly among experimental group ($P<0.001$). Birds treated with BM + BS and BS had

lighter breast meat compared to the control group, while their breast color was similar to that of the BM group. The redness (a^*) of the meat was significantly higher in the BM + BS group compared to the control group. The BS group had the highest redness, followed by the BM group ($P<0.001$). The BM + BS group showed higher yellowness (b^*) compared to the control group and BM treated birds, while the BS treated birds had similar yellowness to all other group (control, BM and BM + BS). The addition of BM, BS and BM + BS significantly increased the pH of the pectoral muscle compared to the control group ($P<0.001$).

DISCUSSION

Studies have demonstrated that prebiotics, probiotics, and synbiotics have a positive correlation with increased weight gain, FI, and FCR in broilers [25-27]. Our findings demonstrate that prebiotic and probiotic supplementation improved performance parameters, with synergistic increase in the synbiotic group. Our results corroborate previously established research, supporting the claim that supplementation with prebiotics, probiotics, and synbiotics has a positive correlation with broiler performance, particularly in the synbiotic supplemented group, which showed the highest response [28,29]. Conversely, Sahin et al. [19] observed that the administration of prebiotic and probiotic supplements did not yield any statistically significant impact on body weight gain and feed conversion ratio. Furthermore, feed intake increased in the synbiotic group, while there were no changes in the prebiotic and probiotic treatments. These findings are in accordance with Abdel-Fattah and Fararh [28] who did not find an effect of probiotic and prebiotic supplementations on feed intake. While the impacts of synbiotic supplementation on the growth performance of broilers are generally positive. The result depends on the type of synbiotic, the application method, and the chicken's genotype [30-32]. Our findings indicated that the FCR improved in both synbiotic and probiotic treatment groups, with the best improvement in the synbiotic group. These findings are in accordance with

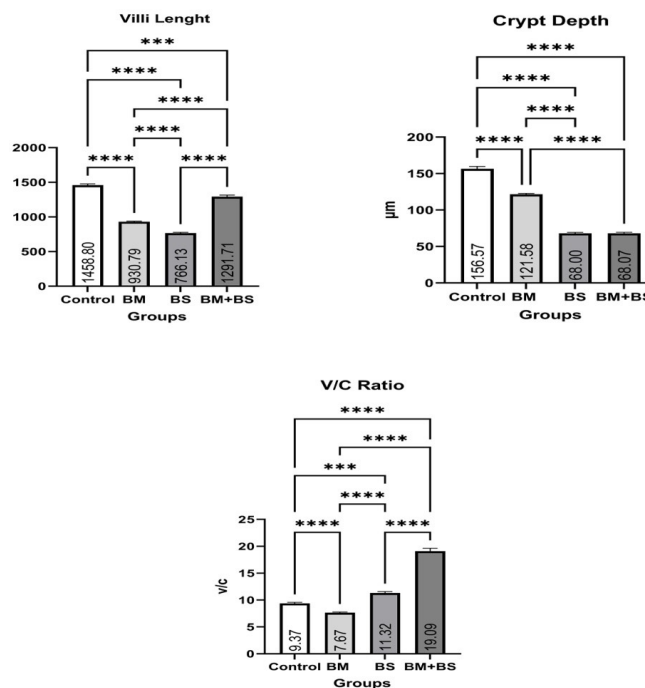


Fig 2. Impact of prebiotic, probiotic, and synbiotics supplementation on villus height, and villus height /crypt depth ratio. V/C: villus height/crypt depth. The X-axis displays villus length, crypt depth, and V/C ratio (µm), while the Y-axis shows their distribution in the control and experimental groups. Control: basal diet; BM: 1 g/kg prebiotic powder (β-glucan + mannanoligosaccharide), BS: 1 g/kg probiotic powder (Bacillus subtilis), BM+BS: 0.5 g/kg prebiotic (Bacillus subtilis) + 0.5 g/kg probiotic (β-glucan + mannanoligosaccharide) Error bars indicate standard deviation. Control and other groups: *** $P<0.05$, **** $P<0.01$

Table 4. Effect of probiotic, prebiotic, and synbiotics supplementation on broiler meat quality

Item	Treatments ¹				P-value
	Control	BM	BS	BM+BS	
pH15min	5.96±0.03 ^b	6.32±0.06 ^a	6.25±0.04 ^a	6.27±0.06 ^a	0.001
pH24h	5.75±0.03 ^b	6.11±0.07 ^a	6.05±0.04 ^a	6.07±0.06 ^a	0.001
Lightness (L*)	44.28±0.67 ^a	42.97±0.81 ^{ab}	40.45±0.55 ^b	40.77±0.68 ^b	0.001
Redness (a*)	1.98±0.12 ^b	2.50±0.26 ^{ab}	2.70±0.31 ^{ab}	3.19±0.26 ^a	0.001
Yellowness (b*)	10.13±0.32 ^b	10.34±0.70 ^b	11.23±0.38 ^{ab}	12.21±0.52 ^a	0.018

a,b Each superscript indicates the difference between the means within the row ($P<0.05$)

¹Control: basal diet without supplementation; BM: Basal diet supplemented with 1 g/kg prebiotic powder (β-glucan + mannanoligosaccharide), BS: Basal diet supplemented with 1 g/kg probiotic powder (Bacillus subtilis), BM+BS: Basal diet supplemented with 0.5 g/kg prebiotic (β-glucan + mannanoligosaccharide) + 0.5 g/kg probiotic (Bacillus subtilis)

Abdel-Fattah and Fararh^[28] who reported the low FCR in the synbiotic treatment group, followed by the probiotic treatment group. These improved performance indices that arise from synbiotic supplementation are likely the result of the stimulation of beneficial gut microbes. This synergistic effect stems from enhanced gut microbial fermentation and host nutrient utilization^[33]. With the prospects of improving growth performance, synbiotics are a promising alternative to antibiotics^[34].

Our study demonstrated that the synbiotic and probiotic groups achieved the highest slaughter weight, hot carcass weight, and cold carcass weight, respectively. Previous studies have also found that synbiotics positively affect carcass characteristics in broilers^[28,35,36]. Cheng et al.^[25] reported no synbiotic effect on carcass weight, although some studies have reported improvements in breast yield in the synbiotic group^[25,28,37]. In our study, there were no significant differences in the percentages of cold and hot carcass, gizzard weight, or liver weight, consistent with the work by Sarangi et al.^[16] In addition, Chumpawadee et al.^[38] reported no probiotic effect on these parameters. Notably, gizzard weight was significantly higher in the synbiotic group, and the maximum heart weight was in the probiotic and synbiotic groups, consistent with the work by Tayeri et al.^[39] who reported increased heart weight after synbiotic supplementation. This increased gizzard and heart weights can be attributed to the improved gut functionality and metabolic activity of the broiler chickens. Gizzard play a major role in the mechanical digestion of feed. The synergistic effect of the probiotic and prebiotic promoted higher FI through gut microflora and enzymes modulation, resulting in prolonged retention time of the feed in the upper digestive tract and greater muscle development of the gizzard for improved gastrointestinal functioning^[40]. The increased heart weight in the synbiotic group likely indicates improved metabolic performance and the associated increase in circulatory demand. Birds in the supplemented groups showed higher FI, ADG and improved FCR and this improvement were highest in the synbiotic supplemented group. Birds exhibiting superior growth and feed efficiency require increased oxygen and nutrient supply, which may stimulate the cardiac muscle development as a physiological response.

Intestinal integrity and function in broilers are greatly affected by villus structure, specifically villus length and crypt depth, which characteristically regulate the capacity to absorb nutrients. A greater V/C ratio is highly correlated with increased intestinal integrity and efficiency of nutrient utilization^[41]. Increased villus height enhances feed efficiency by increasing the area for nutrient uptake^[42]. Synbiotics, probiotics, and prebiotics have been reported to increase villus length and the V/C ratio, mainly by reducing crypt depth^[43]. The intestinal

crypts are the places at the base of the villi where stem cells proliferate to replace the enterocytes. A shallow crypt indicated longer lifespan and a slower turnover rate of epithelial cells. Thus, lower crypt depth is considered as a positive indicator of intestinal health and functional maturity. In the present study, the addition of probiotic, prebiotic, and synbiotic supplements also resulted in the reduction in the depth of the crypts following the previous trend. Contrary to previous reports, the present study noted a decline in villus length with supplementation with these additives. Therefore, villus height alone is insufficient for evaluating the effects of probiotics, prebiotics, and synbiotics on intestinal health; it must be considered alongside other intestinal morphology and performance parameters. Extensive studies have shown that dietary supplementation with probiotics and synbiotics improves intestinal morphology as seen by significant increments in the V/C ratio^[44,45]. In this study, the V/C ratio increased in the probiotic and synbiotic treatment groups. The performance improvements observed can be attributed to the ability of biological feed additives to modulate microbial populations and gastrointestinal pH, thereby enhancing nutrient absorption and feed utilization efficiency^[46]. In our study, the V/C ratio was lowered in the prebiotic group. Although prebiotics generally enhance the V/C ratio^[45,47], exceptions can occur depending on specific conditions. This underscores the fact that the effects of prebiotics and probiotics can vary based on species, dosage, and application methods. These findings suggest that probiotics, prebiotics, and synbiotics optimize gut health and mucosal efficiency rather than just only increasing villus height.

Meat color is the first sensory trait that the customer perceives and the most significant factor in product acceptance or rejection since meat color often relates to other quality factors such as freshness, nutritional value, maturity, or spoilage^[48]. Modifying the dietary pattern has been the strategic approach towards meat quality improvement, particularly for broilers^[24]. Myoglobin content and muscle tissue pH are two significant factors that determine meat color and color defects^[49]. The L* value indicates meat brightness, with higher values representing paler colors, while higher a* and b* values reflect consumer desirable redness (freshness) and healthier pigmentation, respectively^[50]. In this study, probiotic and synbiotic supplementation reduced breast muscle L* values (darker color) while increasing a* (redness) across all treated groups. Synbiotics further enhanced b* (yellowness) compared to controls. Consistent with the findings of the present study, it has also been reported that supplementation with *B. subtilis* increased the a* and b* values of meat color^[4,24]. These changes in the meat color parameters can be explained

by the modulatory effects of the probiotic, prebiotic and synbiotic on the gut health, antioxidant status and muscle metabolism. The probiotic and prebiotic supplementation enhances the intestinal integrity and nutrient absorption including pigments such as carotenoids and xanthophylls that contribute to b^* values of the meat [51]. Moreover, improved a^* values of meat color can be attributed to the higher blood circulation, antioxidant enzyme activity, and myoglobin stability. Probiotic, prebiotics and synbiotics are known to decrease the antioxidant levels, reducing lipid peroxidation in the muscle tissue, and prevent oxidation of myoglobin in the muscles resulting in a higher a^* values of meat [52]. The lower lightness in the supplemented groups suggests that meat retained better muscle pigment integrity that resulted in darker and more natural color. Tavaniello et al. [53] reported decreased a^* values following prebiotic supplementation in broilers, whereas conflicting results were observed by other studies, which reported increased L^* values [4, 24]. However, no differences among meat color parameters were observed in some studies [54-56].

Meat quality is based to a great extent on the pH level of the rigor mortis process that encompasses the biochemical reactions occurring as the muscle tissue is converted to meat following slaughter [49]. In the current research, the pH level of the meat was significantly higher in the prebiotic, probiotic, and synbiotic supplemented groups. Meat pH findings are extremely variable in the previously reported literature. While there have been researchers who have observed the trend to be decreasing [4, 24], some researchers observed the trend to be increasing [55], and a few have observed no significant impact [54, 56]. In broilers, muscles with pH values above 6.0 contain minimal protein denaturation that manifests as low light scattering and translucency. In contrast, muscles with pH values below 6.0 contain increased protein denaturation that causes opaque appearance and increased light scattering [49]. Optical properties of meat that depend on pH influence the light reflected by internal and external surfaces. Light scattering has minimal influence on color properties such as redness (a^*) and yellowness (b^*) but has large impacts on meat brightness (L^*) and pigment concentration [57]. Low pH poultry meat has also been associated with low water holding capacity that causes increased shelf life but reduced tenderness [58].

This research tested the impact of probiotic, prebiotic, and synbiotic supplementation on broiler growth performance, meat quality, and intestinal health. Results indicated that probiotic, prebiotic, and synbiotic supplementation improved growth performance in the broilers, with maximum improvement observed in the synbiotic groups. Generally, synbiotic supplementation resulted in higher increases in BW, BWG, and ADFI, as

well as improving the feed conversion ratio. Intestinal morphology, as measured in terms of the V/C ratio, improved in the probiotic group as well as in the synbiotic group. In addition, breast meat color and pH was high in prebiotic, probiotic, and synbiotic supplemented broilers relative to the unsupplemented group. In conclusion, based on the findings, synbiotic supplementation can be an effective management system for improving broiler growth performance, intestinal health, as well as increasing the quality of the meat, in meeting the increasing demand for high quality chicken meats.

DECLARATIONS

Availability of Data and Materials: Data and Materials are available from the corresponding author (Ö.K.).

Acknowledgements: Not applicable.

Funding Support: This study was not financially supported by any person or institution.

Congress-Symposium Information: Not applicable.

Competing Interests: The authors declare that they have no conflict of interest.

Declaration of Generative Artificial Intelligence (AI): The article and tables and figures were not written/created by AI and AI-assisted technologies.

Authors Contributions: T.M.B., led the conceptualization and resource allocation for this study. Experimental procedures were performed by R.R., T.M.B., and B.Y. under the supervision of T.Ş. and Ö.K. Laboratory analyses were conducted by R.R., A.G., E.K.S., T.M.B., and B.Y. Statistical analyses were performed by T.M.B. The initial manuscript draft was prepared by T.M.B. with subsequent writing, review, and editing contributions from T.Ş. and Ö.K., and R.R.

REFERENCES

1. Ayalew H, Zhang H, Wang J, Wu S, Qiu K, Qi G, Tekeste A, Wassie T, Chanie D: Potential feed additives as antibiotic alternatives in broiler production. *Front Vet Sci*, 9:916473, 2022. DOI: 10.3389/fvets.2022.916473
2. Thirumeignanam D, Chellapandian M, Arulnathan N, Parthiban S, Kumar V, Vijayakumar MP, Chauhan S: Evaluation of natural antimicrobial substances blend as a replacement for antibiotic growth promoters in broiler chickens: Enhancing growth and managing intestinal bacterial diseases. *Curr Microbiol*, 81 (2):55, 2024. DOI: 10.1007/s00284-023-03573-w
3. Nawaz AH, Amoah K, Leng QY, Zheng JH, Zhang WL, Zhang L: Poultry response to heat stress: Its physiological, metabolic, and genetic implications on meat production and quality including strategies to improve broiler production in a warming world. *Front Vet Sci*, 8:699081, 2021. DOI: 10.3389/fvets.2021.699081
4. Mohammed A, Mahmoud M, Zaki R, Cheng H: Effect of a probiotic supplement (*Bacillus subtilis*) on struggling behavior, immune response, and meat quality of shackled broiler chickens exposed to preslaughter stress. *Poult Sci*, 103 (10):104051, 2024. DOI: 10.1016/j.psj.2024.104051
5. Rauf U, Khan A, Khan A, Imran M, Ahmad M, Shams MA, Sahin T, Khan MJ, Ali HMM, Rahman HMS: Uses of various prebiotics & probiotics on growth performance of broilers. *Biol Clin Sci Res*, 2024 (1):1035, 2024. DOI: 10.54112/bcsrj.v2024i1.1035

6. Ölmez M, Şahin T, Karadağolu Ö, Uysal S, Bekinkayan B, Filizoğlu E, Yörük MA: Sıcaklık stresi altındaki yumurtacı bıldırcınlarda probiyotik ilavesinin performans ve yumurta kalitesi üzerini etkisi. *Van Sağ Bil Derg*, 14 (2): 228-236, 2021. DOI: 10.52976/vansaglik.971273
7. Fathanah SYE, Rahardja DP, Purwanti S: Impacts of probiotic and dietary Lamtoro leaf meal on the growth performance, digestibility and small intestinal morphometry of Kampung chicken. *Int J Agri Biosci*, 13 (3): 333-339, 2024. DOI: 10.47278/journal.ijab/2024.127
8. Ölmez M, Şahin T, Karadağolu Ö, Ögün M, Yörük M, Dalğa S: Effect of probiotic mixture supplementation to drinking water on the growth performance, carcass parameters and serum biochemical parameters in native Turkish geese. *Kafkas Univ Vet Fak Derg*, 28 (1): 131-138, 2022. DOI: 10.9775/kvfd.2021.26633
9. Srifani A, Mirnawati M, Rizal Y, Nurmiati Y: Isolation and characterization of cellulolytic lactic acid bacteria from soymilk waste as probiotic candidates for broiler. *Int J Vet Sci*, 13 (1): 108-114, 2023. DOI: 10.47278/journal.ijvs/2023.067
10. Tortuero F: Influence of the implantation of *Lactobacillus acidophilus* in chicks on the growth, feed conversion, malabsorption of fats syndrome and intestinal flora. *Poult Sci*, 52 (1): 197-203, 1973. DOI: 10.3382/ps.0520197
11. Hill C, Guarner F, Reid G, Gibson GR, Merenstein DJ, Pot B, Morelli L, Canani RB, Flint HJ, Salminen S: The International Scientific Association for Probiotics and Prebiotics consensus statement on the scope and appropriate use of the term probiotic. *Nat Rev Gastroenterol Hepatol*, 11 (8): 506-514, 2014. DOI: 10.1038/nrgastro.2014.66
12. Kumalasari C, Asmara IY, Nayan N, Adriani L: Characteristics of *Bacillus subtilis* and *Bacillus licheniformis* consortium as probiotics for late-phase laying hens. *Int J Agri Biosci*, 14 (2): 238-243, 2025. DOI: 10.47278/journal.ijab/2024.218
13. Kumalasari C, Asmara IY, Nayan N, Adriani L: The potential of probiotic (*Bacillus subtilis* and *Bacillus licheniformis*) and black soldier fly larvae combination as a supplement for late-phase layer hens: Antimicrobial and enzyme activities. *Int J Vet Sci*, 14 (4): 641-647, 2025. DOI: 10.47278/journal.ijvs/2025.015
14. Gibson GR, Hutkins R, Sanders ME, Prescott SL, Reimer RA, Salminen SJ, Scott K, Stanton C, Swanson KS, Cani PD: Expert consensus document: The International Scientific Association for Probiotics and Prebiotics (ISAPP) consensus statement on the definition and scope of prebiotics. *Nat Rev Gastroenterol Hepatol*, 14 (8): 491-502, 2017. DOI: 10.1038/nrgastro.2017.75
15. Baffoni L, Gaggia F, Di Gioia D, Santini C, Mogna L, Biavati B: A *Bifidobacterium*-based synbiotic product to reduce the transmission of *C. jejuni* along the poultry food chain. *Int J Food Microbiol*, 157 (2): 156-161, 2012. DOI: 10.1016/j.ijfoodmicro.2012.04.024
16. Sarangi NR, Babu L, Kumar A, Pradhan C, Pati P, Mishra J: Effect of dietary supplementation of prebiotic, probiotic, and synbiotic on growth performance and carcass characteristics of broiler chickens. *Vet World*, 9 (3):313, 2016. DOI: 10.14202/vetworld.2016.313-319
17. Zeng X, Li Q, Yang C, Yu Y, Fu Z, Wang H, Fan X, Yue M, Xu Y: Effects of *Clostridium butyricum* - and *Bacillus* spp. - based potential probiotics on the growth performance, intestinal morphology, immune responses, and caecal microbiota in broilers. *Antibiotics*, 10 (6):624, 2021. DOI: 10.3390/antibiotics10060624
18. Yang J, Wang J, Liu Z, Chen J, Jiang J, Zhao M, Gong D: *Ligilactobacillus salivarius* improve body growth and anti-oxidation capacity of broiler chickens via regulation of the microbiota-gut-brain axis. *BMC Microbiol*, 23 (1):395, 2023. DOI: 10.1186/s12866-023-03135-x
19. Sahin T, Kaya I, Unal Y, Elmali DA: Dietary supplementation of probiotic and prebiotic combination (Combiotics) on performance, carcass quality and blood parameters in growing quails. *J Anim Vet Adv*, 7 (11): 1370-1373, 2008.
20. Ölmez M, Karadağolu O, Berberoğlu TM, Karadağ Sari EK, Yediel Aras S, Yilmaz B, Şahin T: Etlik bıldırcın (*Coturnix coturnix japonica*) rasyonlarına prebiyotik kombinasyonu ilavesinin büyüme performansı ve duodenum histolojisi üzerindeki etkileri. *Kadirli Fac Appl Sci*, 3 (2): 299-310, 2023.
21. NRC: Nutrient Requirements of Poultry. 9th rev. ed., Washington (DC): National Academy Press, 1994.
22. Bundur A, Riaz R, Elibol FK, Demir T, Polo J, Crenshaw J, Zentek J, Sizmaz O: Effects of spray-dried plasma on performance, carcass parameters, tibia quality and Newcastle disease vaccine efficacy in broiler chicken fed corn-soy diets with two varying levels of digestible amino acids and AMEn density. *PLoS One*, 19 (9):e0309263, 2024. DOI: 10.1371/journal.pone.0309263
23. Shung CC, Hsin KY, Tan FJ, Chen SE: Effects of hard and soft scalding on defeathering and carcass quality of different breeds of chickens. *Animals*, 12 (22):3145, 2022. DOI: 10.3390/ani12223145
24. Mohammed AA, Zaki R, Negm E, Mahmoud M, Cheng H: Effects of dietary supplementation of a probiotic (*Bacillus subtilis*) on bone mass and meat quality of broiler chickens. *Poult Sci*, 100 (3):100906, 2021. DOI: 10.1016/j.psj.2020.11.073
25. Cheng Y, Chen Y, Li X, Yang W, Wen C, Kang Y, Wang A, Zhou Y: Effects of synbiotic supplementation on growth performance, carcass characteristics, meat quality and muscular antioxidant capacity and mineral contents in broilers. *J Sci Food Agric*, 97 (11): 3699-3705, 2017. DOI: 10.1002/jsfa.8230
26. Froebel L, Jalukar S, Lavergne T, Lee J, Duong T: Administration of dietary prebiotics improves growth performance and reduces pathogen colonization in broiler chickens. *Poult Sci*, 98 (12): 6668-6676, 2019. DOI: 10.3382/ps/pez537
27. Ren X, Zhang Y, Lu H, Jiao N, Jiang S, Li Y, Li J, Yang W: Effects of dietary *Bacillus subtilis* BC02 supplementation on growth performance, antioxidant capacity, and cecal microbes in broilers. *Agriculture*, 13 (8):1561, 2023. DOI: 10.3390/agriculture13081561
28. Abdel-Fattah F, Fararh KM: Effect of dietary supplementation of probiotic, prebiotic and synbiotic on performance, carcass characteristics, blood picture and some biochemical parameters in broiler chickens. *BVMJ*, 20, 9-23, 2009.
29. Fernandes B, Martins M, Mendes A, Milbradt E, Sanfelice C, Martins B, Aguiar E, Bresne C: Intestinal integrity and performance of broiler chickens fed a probiotic, a prebiotic, or an organic acid. *Braz J Poult Sci*, 16, 417-424, 2014. DOI: 10.1590/1516-635X1604417-424
30. Dunislawska A, Slawinska A, Stadnicka K, Bednarczyk M, Gulewicz P, Jozefiak D, Siwek M: Synbiotics for broiler chickens - *In vitro* design and evaluation of the influence on host and selected microbiota populations following in ovo delivery. *PloS One*, 12 (1):e0168587, 2017. DOI: 10.1371/journal.pone.0168587
31. Phupaboon S, Hashim FJ, Punyappa-Path S, Phesatcha B, Kanpipit N, Kongtongdee P, Phumkhachorn B, Rattanachaiunsopon P: Supplementation of microencapsulated fish-derived probiotic lactic acid bacteria to enhance antioxidant activity in animal feed. *Int J Agri Biosci*, 13 (3): 250-258, 2024. DOI: 10.47278/journal.ijab/2024.110
32. Susalam M, Harnentis H, Marlida Y, Jamsari J, Ardani L: The effect of probiotics consortium isolated from fermented fish (Budu) on broiler performances and meat quality. *Int J Vet Sci*, 13 (1): 100-107, 2024. DOI: 10.47278/journal.ijvs/2023.066
33. Guarner F: Inulin and oligofructose: Impact on intestinal diseases and disorders. *Br J Nutr*, 93 (S1):S61-S65, 2005. DOI: 10.1079/BJN20041345
34. Tomczyk G, Niczypruk JS, Kozdruń W, Sawicka-Durkalec A, Bocian Ł, Barabasz M, Michalski M: Probiotic supplementation as an alternative to antibiotics in broiler chickens. *J Vet Res*, 68 (1):147, 2024. DOI: 10.2478/jvetres-2024-0009
35. Ashayerizadeh A, Dabiri N, Ashayerizadeh O, Mirzadeh KH, Roshanfekar H, Mamooee M: Effect of dietary antibiotic, probiotic and prebiotic as growth promoters, on growth performance, carcass characteristics and hematological indices of broiler chickens. *Pak J Biol Sci*, 12 (1): 52-57, 2009. DOI: 10.3923/pjbs.2009.52.57
36. Awad W, Ghareeb K, Abdel-Raheem S, Böhm J: Effects of dietary inclusion of probiotic and synbiotic on growth performance, organ weights, and intestinal histomorphology of broiler chickens. *Poult Sci*, 88 (1): 49-56, 2009. DOI: 10.3382/ps.2008-00244

37. Ölmez M, Şahin T, Karadağolu Ö, Ögün M, Işık SA, Kuru BB, Yörük M: Effects of dietary prebiotic, probiotic, and synbiotic supplementation on growth performance, carcass traits, digestive enzymes and some biochemical parameters in broiler chickens. *J Hellenic Vet Med Soc*, 76 (1): 8705-8714, 2025. DOI: 10.12681/jhvms.37162
38. Chumpawadee S, Chinrasri O, Somchan T, Ngamluan S, Soychuta S: Effect of dietary inclusion of cassava yeast as probiotic source on growth performance, small intestine (ileum) morphology and carcass characteristic in broilers. *Int J Poult Sci*, 7 (3): 246-250, 2008. DOI: 10.3923/ijps.2008.246.250
39. Tayeri V, Seidavi A, Asadpour L, Phillips CJC: A comparison of the effects of antibiotics, probiotics, synbiotics and prebiotics on the performance and carcass characteristics of broilers. *Vet Res Commun*, 42 (3): 195-207, 2018. DOI: 10.1007/s11259-018-9724-2
40. Rodjan P, Soisuwan K, Thongprajukaew K, Theapparap Y, Khongthong S, Jeenkeawpieam J, Salaeharæ T: Effect of organic acids or probiotics alone or in combination on growth performance, nutrient digestibility, enzyme activities, intestinal morphology and gut microflora in broiler chickens. *J Anim Physiol Anim Nutr*, 102 (2): e931-e940, 2018. DOI: 10.1111/jpn.12858
41. Tang Y, Zhang X, Wang Y, Guo Y, Zhu P, Li G, Zhang J, Ma Q, Zhao L: Dietary ellagic acid ameliorated *Clostridium perfringens*-induced subclinical necrotic enteritis in broilers via regulating inflammation and cecal microbiota. *J Anim Sci Biotechnol*, 13 (1):47, 2022. DOI: 10.1186/s40104-022-00694-3
42. Brautigan D, Li R, Kubicka E, Turner S, Garcia J, Weintraut M, Wong E: Lysolecithin as feed additive enhances collagen expression and villus length in the jejunum of broiler chickens. *Poult Sci*, 96 (8): 2889-2898, 2017. DOI: 10.3382/ps/pex078
43. Lin J, Comi M, Vera P, Alessandro A, Qiu K, Wang J, Wu S-g, Qi G-h, Zhang H-j: Effects of *Saccharomyces cerevisiae* hydrolysate on growth performance, immunity function, and intestinal health in broilers. *Poult Sci*, 102 (1):102237, 2023. DOI: 10.1016/j.psj.2022.102237
44. Wang W, Li Z, Lv Z, Zhang B, Lv H, Guo Y: Effects of *Kluyveromyces marxianus* supplementation on immune responses, intestinal structure and microbiota in broiler chickens. *PloS One*, 12 (7):e0180884, 2017. DOI: 10.1371/journal.pone.0180884
45. Ma Y, Wang W, Zhang H, Wang J, Zhang W, Gao J, Wu S, Qi G: Supplemental *Bacillus subtilis* DSM 32315 manipulates intestinal structure and microbial composition in broiler chickens. *Sci Rep*, 8 (1):15358, 2018. DOI: 10.1038/s41598-018-33762-8
46. Fuller R: Probiotics in man and animals. *J Bacteriol*, 66 (5): 365-378, 1989.
47. Chacher M, Kamran Z, Ahsan U, Ahmad S, Koutoulis K, DIn HQ, Cengiz Ö: Use of mannan oligosaccharide in broiler diets: An overview of underlying mechanisms. *J World's Poult Sci*, 73 (4): 831-844, 2017. DOI: 10.1017/S0043933917000757
48. Salueña BH, Gamasa CS, Rubial JMD, Odriozola CA: CIELAB color paths during meat shelf life. *Meat Sci*, 157:107889, 2019. DOI: 10.1016/j.meatsci.2019.107889
49. Mir NA, Rafiq A, Kumar F, Singh V, Shukla V: Determinants of broiler chicken meat quality and factors affecting them: A review. *J Food Sci Technol*, 54, 2997-3009, 2017. DOI: 10.1007/s13197-017-2789-z
50. Bueno LO, Massingue AA, Ramos AdLS, Ferreira DD, Ramos EM: Meat color by numbers: Evaluation of the myoglobin redox forms by different methods and its relationship to CIE color indices. *J Food Compos Anal*, 133:106365, 2024. DOI: 10.1111/j.1365-2621.1971.tb01588.x
51. Zhang L, Wang Y, Zhang R, Jia H, Liu X, Zhu Z: Effects of three probiotics and their interactions on the growth performance of and nutrient absorption in broilers. *Peer J*, 10:e13308, 2022. DOI: 10.7717/peerj.13308
52. Cramer T, Kim H, Chao Y, Wang W, Cheng H, Kim Y: Effects of probiotic (*Bacillus subtilis*) supplementation on meat quality characteristics of breast muscle from broilers exposed to chronic heat stress. *Poult Sci*, 97 (9): 3358-3368, 2018. DOI: 10.3382/ps/pey176
53. Tavaniello S, Maiorano G, Stadnicka K, Mucci R, Bogucka J, Bednarczyk M: Prebiotics offered to broiler chicken exert positive effect on meat quality traits irrespective of delivery route. *Poult Sci*, 97 (8): 2979-2987, 2018. DOI: 10.3382/ps/pey149
54. Guaragni A, Boiago MM, Bottari NB, Morsch VM, Lopes TE, da Silva AS: Feed supplementation with inulin on broiler performance and meat quality challenged with *Clostridium perfringens*: Infection and prebiotic impacts. *Microb Pathog*, 139:103889, 2020. DOI: 10.1016/j.micpath.2019.103889
55. Dunisławska A, Biesek J, Adamski M: Growth performance, carcass composition, and qualitative meat features of broiler chickens after galactooligosaccharides and sodium butyrate in ovo administration. *Poult Sci*, 103 (10):104094, 2024. DOI: 10.1016/j.psj.2024.104094
56. Namted S, Chailaor P, Bunchasak C: Effects of drinking water fructo-oligosaccharide supplementation on broiler chicken growth performance, blood glucose level, white blood cell count, carcass yield, meat quality, and cecal microbiota. *Poult Sci*, 104 (4):104901, 2025. DOI: 10.1016/j.psj.2025.104901
57. Anadon HLS. **Biological, nutritional, and processing factors affecting breast meat quality of broilers.** PhD thesis. Blacksburg (VA): Virginia Polytechnic Institute and State University; 2002.
58. Barbut S: Colour measurements for evaluating the pale soft exudative (PSE) occurrence in turkey meat. *Int Food Res*, 26 (1): 39-43, 1993. DOI: 10.1016/0963-9969(93)90103-P

